



HUNTERS[®]

HERE TO GET *you* THERE



4



3



3



D

Beatrice Road, Worsley, Manchester

Offers In The Region Of £995,000



Located on the highly sought-after Beatrice Road in Worsley, just a short walk from Broadoak Primary School, The Green, Worsley Village and the picturesque Bridgewater Canal, this outstanding family home has been completely remodelled and finished to an exceptional standard throughout. Surrounded by beautiful woodland walks in Worsley Woods and close to a fantastic selection of independent bars and restaurants, the location also offers excellent access to the M60, M61, Trafford Centre and Manchester Airport.

The property has been thoughtfully redesigned to create modern, high-end living spaces ideal for contemporary family life. The heart of the home is the stunning open-plan kitchen and dining area, fitted with a brand new, high-end Hacker German kitchen complete with sleek cabinetry, integrated appliances and a large central island, perfect for entertaining and everyday living. This space, along with the hallway, benefits from underfloor heating, adding both comfort and luxury.

The ground floor also offers a spacious lounge, a useful home office, utility room, ground floor WC and internal access to the garage. CAT 6 cabling has been installed throughout, making the property ideal for home working and modern connectivity.

To the first floor, there are four generously sized bedrooms, including an impressive principal bedroom, along with all bathrooms located upstairs, finished to a high specification with contemporary fittings and stylish tiling.

Externally, the property benefits from off-road parking, an integral garage and well-proportioned outdoor space, ideal for families and entertaining.

This is a rare opportunity to acquire a fully remodelled, high-specification home in one of Worsley's most desirable locations. Early viewing is highly recommended to truly appreciate the quality, space and lifestyle on offer.

KEY FEATURES

- NEWLY REFURBISHED
- LARGE OPEN PLAN KITCHEN/LIVING/DINING ROOM
- STUDY
- FOUR BEDROOMS
- THREE BATHROOMS
- UTILITY ROOM
- HIGHLY SOUGHT AFTER LOCATION
- MOVE IN READY
- OFF ROAD PARKING
- MUST BE SEEN TO FULLY APPRECIATE



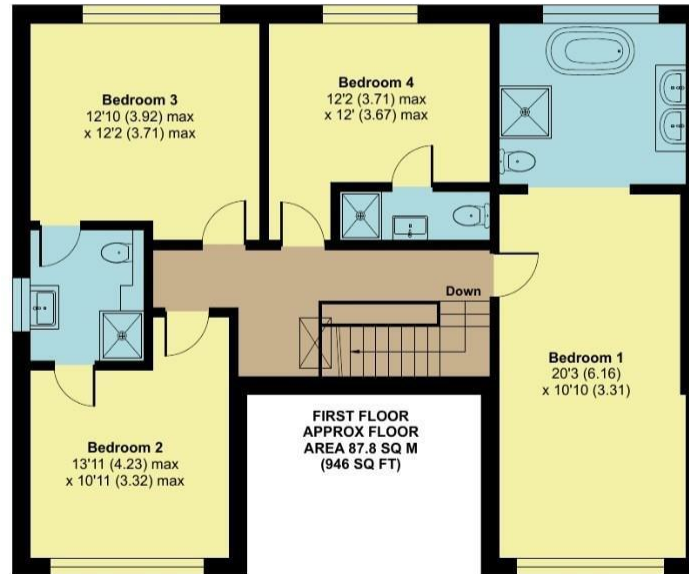




Beatrice Road, Worsley, Manchester, M28

Approximate Area = 2238 sq ft / 207.9 sq m
 Garage = 113 sq ft / 10.4 sq m
 Total = 2351 sq ft / 218.3 sq m

For identification only - Not to scale



Floor plan produced in accordance with RICS Property Measurement Standards incorporating International Property Measurement Standards (IPMS2 Residential). © nitchecom 2025. Produced for Hunters Property Group. REF: 1393044

Energy Efficiency Rating		Environmental Impact (CO ₂) Rating	
Current	Potential	Current	Potential
Very energy efficient - lower running costs		Very environmentally friendly - lower CO ₂ emissions	
(92 plus) A		(92 plus) A	
(81-91) B		(81-91) B	
(69-80) C		(69-80) C	
(55-68) D		(55-68) D	
(39-54) E		(39-54) E	
(21-38) F		(21-38) F	
(1-20) G		(1-20) G	
Not energy efficient - higher running costs		Not environmentally friendly - higher CO ₂ emissions	
	79		
	60		
EU Directive 2002/91/EC		EU Directive 2002/91/EC	
England & Wales		England & Wales	

The Granary, Worsley, Manchester, M28 2EB | 0161 790 9000
 worsley@hunters.com | www.hunters.com



This Hunters business is independently owned and operated by Prestige Property International Limited | Registered Address Mill House 6 Worsley Road, Worsley, Manchester, England, M28 2NL | Registered Number: 05299070 England and Wales | VAT No: 938460205 with the written consent of Hunters Franchising Limited.