



Ringway, Southall, UB2 5SU

- End of Terrace House
- First Floor Bathroom
- Residential Street
- Private Rear Garden with Brick Built Storage Space
- Close to Local Amenities, Schools & Transport Links
- Three Bedrooms
- NO CHAIN
- Further Potential to Extend (STPP)
- Own Driveway
- EPC Rating: C/Council Tax: D

Offers Over £515,000



Ringway, Southall, UB2 5SU

DESCRIPTION

This well-proportioned end of terrace house offers an excellent opportunity for families and buyers looking to make a home their own. Positioned on a quiet residential street, the property combines practical living space with future potential.

The ground floor features a welcoming entrance leading into a spacious reception room, ideal for relaxing or entertaining. To the rear, there is a separate dining room flowing into a separate kitchen, providing a functional layout with clear zones for cooking and dining. The layout also offers flexibility for reconfiguration, subject to requirements.

Upstairs, the first floor comprises three bedrooms, including two generous doubles and a well-sized single room, making it suitable for families, guests, or home working. A first floor bathroom accompanies the bedrooms on the first floor.

Externally, the property benefits from a private rear garden, measuring approximately, providing ample outdoor space for recreation or landscaping. The garden also includes a brick-built storage outbuilding and useful side access. To the front, there is the advantage of an own driveway, offering off-street parking.

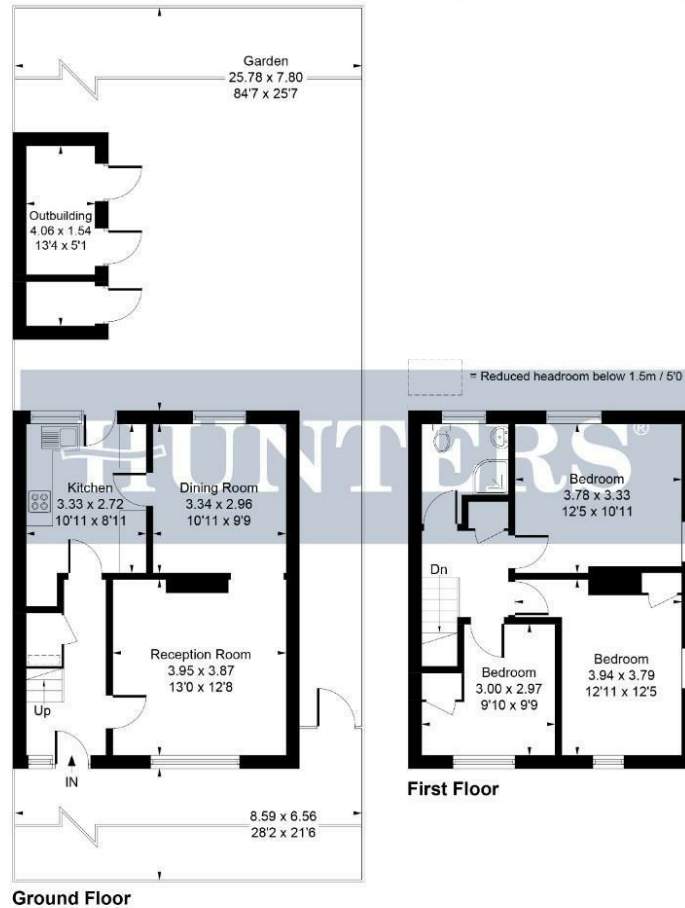
Conveniently located, the property is close to local amenities, schools, and transport links, including nearby shops, supermarkets, and everyday conveniences. Well-regarded schools are within easy reach, and excellent transport connections are available via local bus routes and nearby train stations, providing access into Central London and surrounding areas.

EPC Rating: C/Council Tax: D





Approximate Gross Internal Area = 87.49 sq m / 942 sq ft
 Outbuilding = 6.78 sq m / 73 sq ft
 Total = 94.27 sq m / 1015 sq ft



Whilst every attempt has been made to ensure the accuracy of the floor plan contained here, measurements of doors, windows, rooms and any other items are approximate and no responsibility is taken for any error, omission, or mis-statement. This plan is for illustrative purposes only and should be used as such by any prospective purchaser.

Produced for Hunters

Viewings

Please contact hayes@hunters.com, if you wish to arrange a viewing appointment for this property or require further information.

Valuations

For a valuation of your property, please email the team with your property details, contact information and the times you are available.

ENERGY PERFORMANCE CERTIFICATE

The energy efficiency rating is a measure of the overall efficacy of a home. The higher the rating the more energy efficient the home is and the lower the fuel bills will be.

Energy Efficiency Rating		Current	Potential
Very energy efficient - lower running costs			
(92 plus) A			
(81-91) B			
(69-80) C			
(55-68) D		70	80
(39-54) E			
(21-38) F			
(1-20) G			
Not energy efficient - higher running costs			
England & Wales		EU Directive 2002/91/EC	

These particulars are intended to give a fair and reliable description of the property but no responsibility for any inaccuracy or error can be accepted and do not constitute an offer or contract. We have not tested any services or appliances (including central heating if fitted) referred to in these particulars and the purchasers are advised to satisfy themselves as to the working order and condition. If a property is unoccupied at any time there may be reconnection charges for any switched off/disconnected or drained services or appliances - All measurements are approximate.

THINKING OF SELLING? If you are thinking of selling your home or just curious to discover the value of your property, Hunters would be pleased to provide free, no obligation sales and marketing advice. Even if your home is outside the area covered by our local offices we can arrange a Market Appraisal through our national network of Hunters estate agents.



31 Coldharbour Lane, Hayes, UB3 3EB
 Tel: 0208 848 0978 Email: hayes@hunters.com <https://www.hunters.com>

