

# HUNTERS®

HERE TO GET *you* THERE

**Flat 21, 8 King Edwards Square, Sutton Coldfield, B73 6AQ**

**Offers Over £250,000**

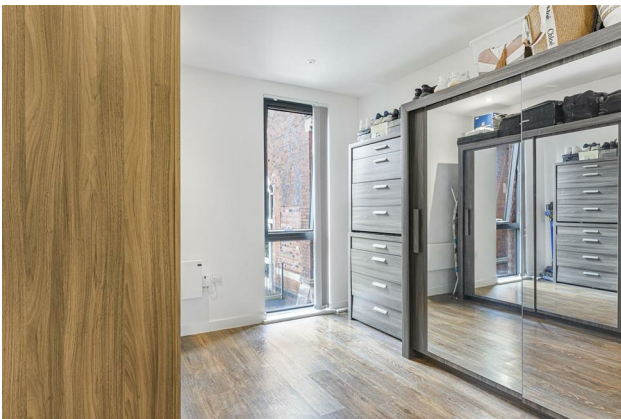
Property Images



# HUNTERS<sup>®</sup>

HERE TO GET *you* THERE

## Property Images



# HUNTERS<sup>®</sup>

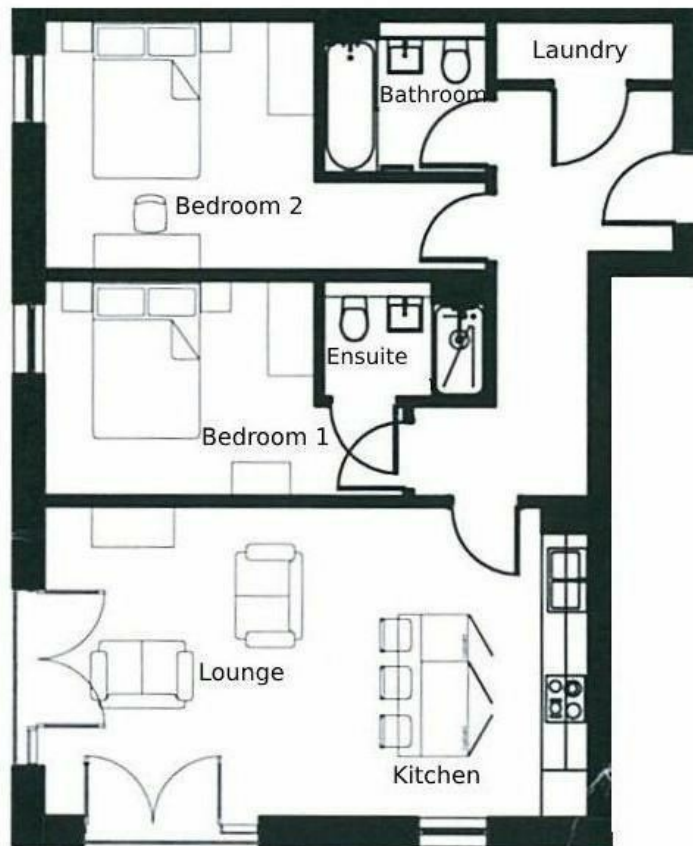
HERE TO GET *you* THERE

## Property Images



# HUNTERS®

HERE TO GET *you* THERE



## EPC

Energy Efficiency Rating		
	Current	Potential
Very energy efficient - lower running costs		
(92 plus) <b>A</b>		
(81-91) <b>B</b>	83	83
(69-80) <b>C</b>		
(55-68) <b>D</b>		
(39-54) <b>E</b>		
(21-38) <b>F</b>		
(1-20) <b>G</b>		
Not energy efficient - higher running costs		
<b>England &amp; Wales</b>	EU Directive 2002/91/EC	

## Map



## Details

Type: Apartment Beds: 2 Bathrooms: 2 Receptions: 1 Tenure: Leasehold

## Summary

This superb luxury two-bedroom apartment occupies a highly convenient and sought-after central location, ideally positioned for well-regarded schools, excellent rail links, and an array of leisure facilities including Sutton Park.

Accessed via a secure intercom entry system with well-maintained communal areas, the apartment offers contemporary, well-presented accommodation throughout and benefits from an allocated parking space within a secure gated car park, internally comprising;

Welcoming reception hallway with Karndean wood-effect flooring, stunning open-plan kitchen, living and dining area measuring 22'3" x 12'10" (max). This impressive multifunctional space features a stylish range of fitted wall and base units with wooden work surfaces, pan drawers and a full suite of integrated appliances including oven, four-ring electric hob, dishwasher, fridge/freezer, large central island providing additional storage and breakfast bar seating, ceramic floor tiling, full-height windows and two sets of double doors with Juliette balconies, allowing excellent natural light and attractive outlooks.

Bedroom one measures 8'10" x 15'3" (max) and is complemented by a luxury ensuite shower room, finished with ceramic wall and floor tiling, Porcelanosa sanitary ware, a wall-mounted wash basin, concealed WC, shower enclosure and chrome ladder-style radiator. Bedroom two is a particularly generous double room measuring 18'6" x 10'4" (max), featuring Karndean wood-effect flooring and ample space for furnishings. Main bathroom, finished to a high standard with ceramic wall and floor tiling, Porcelanosa sanitary ware, a bath with shower over, wall-mounted wash basin, concealed WC and chrome ladder radiator.

- Stunning 2 bedroom apartment
- Open plan kitchen/living/dining
- Allocated parking in gated car park
- Bathroom and ensuite
- Convenient central location
- Council Tax Band B