



HUNTERS[®]
HERE TO GET *you* THERE

Elmtree Farm Main Street, Reedness, Goole, DN14 8EW

Elmtree Farm Main Street, Reedness, Goole, DN14 8EW

Asking Price £499,950

NO ONWARD CHAIN. Situated in the charming rural village of Reedness, just a short distance from the market town of Goole, this location offers an attractive balance of peaceful countryside living and convenient access to local amenities.

DESCRIPTION

Hunters Selby are delighted to present this beautifully appointed five-bedroom family home, ideally positioned in the peaceful rural village of Reedness. This impressive property offers spacious and versatile living accommodation set over three floors. The ground floor features a welcoming entrance hall, a stylish dining room, a modern shower room, a generous lounge, a cosy snug, a well-equipped kitchen, a practical utility room, and a convenient WC. On the first floor, you'll find bedroom one with an en-suite shower room, three further double bedrooms, and a contemporary family bathroom. The second floor offers an additional double bedroom. Outside, the property benefits from off road parking for a single vehicle, with potential to extend for several more if needed, a private, enclosed garden laid mainly to lawn, fencing surrounding the perimeter for added privacy. This wonderful home combines countryside charm with characterful comfort — early viewing is highly recommended to fully appreciate the quality and space on offer. Call Hunters Selby seven days a week.

LOCATION

Situated in the charming rural village of Reedness, just a short distance from the market town of Goole, this location offers an attractive balance of peaceful countryside living and convenient access to local amenities.

Material Information - Selby

Tenure Type; Freehold

Council Tax Banding; D

EPC Rating: F

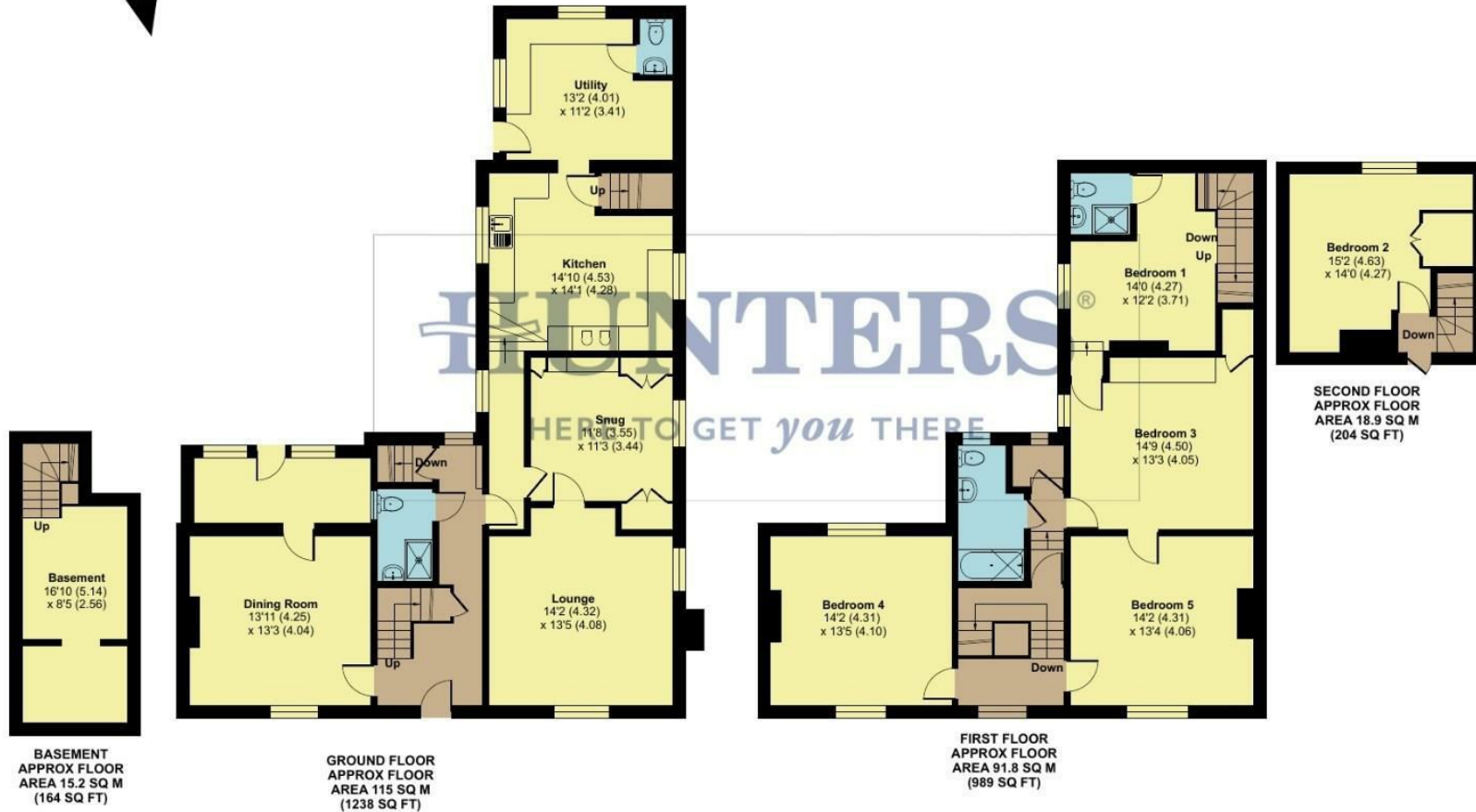
Hunters Selby 23 Finkle Street, Selby, YO8 4DT | 01757 210884

selby@hunters.com | www.hunters.com

Elmtree Farm, Main Street, Reedness, Goole, DN14

Approximate Area = 2595 sq ft / 241 sq m

For identification only - Not to scale



Floor plan produced in accordance with RICS Property Measurement 2nd Edition, Incorporating International Property Measurement Standards (IPMS2 Residential), © nctechcom 2026. Produced for Hunters Property Group. REF: 1431168

