



HUNTERS[®]
HERE TO GET *you* THERE

50 George Street, Snaith, Goole, DN14 9HZ

HUNTERS
HERE TO GET *you* THERE

50 George Street, Snaith, Goole, DN14 9HZ

Asking Price £144,995

DESCRIPTION

NO CHAIN *IDEAL FTB PURCHASE. Hunters (Selby) are delighted to offer for sale this well presented two bedroom end terraced house situated within the popular village of Snaith. The property benefits from an electric heating system and UPVC double glazing and briefly comprises lounge and kitchen to the ground floor. To the first floor there is two bedrooms and a family bathroom. Outside to the property there is a low maintenance garden with patio area, two stores and an allocated parking space. Viewing is highly recommended to appreciate the accommodation on offer. Call Hunters Selby seven days a week to book a viewing.

LOCATION

The ancient town of Snaith is located around seven miles south of Selby with convenient access to bus routes and railway station. It benefits from a huge range of amenities, including a library, a post office, a dental practice, a doctors' surgery, a pharmacy and a petrol station. It also has a co-op, and a brilliant variety of small retail, service and food outlets, including tea rooms, takeaways, restaurants and pubs. Education is provided in the town with both primary school and secondary school.

DIRECTIONS

Leaving Selby via Bawtry Road A1041 continue across Bypass travelling through Camblesforth, at roundabout take second exit to Carlton, travel through Carlton until you arrive in Snaith, take the left hand turn onto George Street where the property can be identified by our Hunters for sale board.

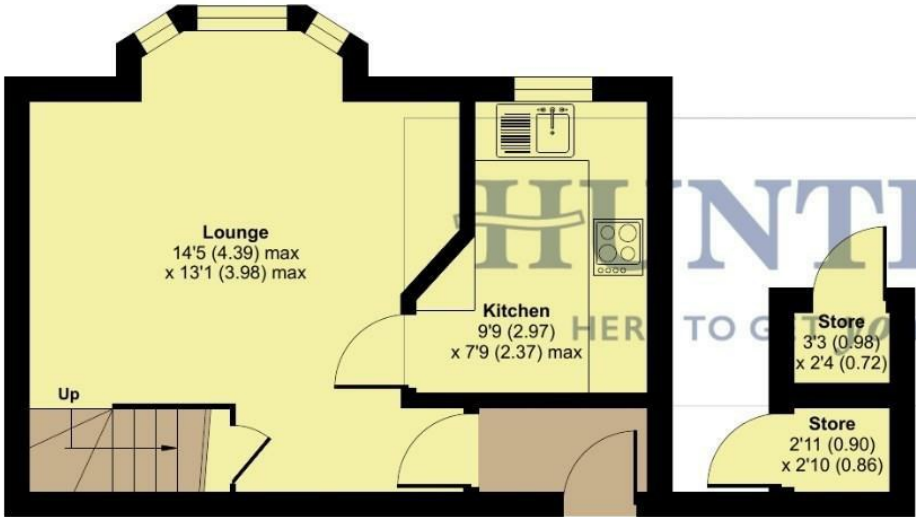
Material Information - Selby

Tenure Type; Freehold
Council Tax Banding; A
EPC Rating : D

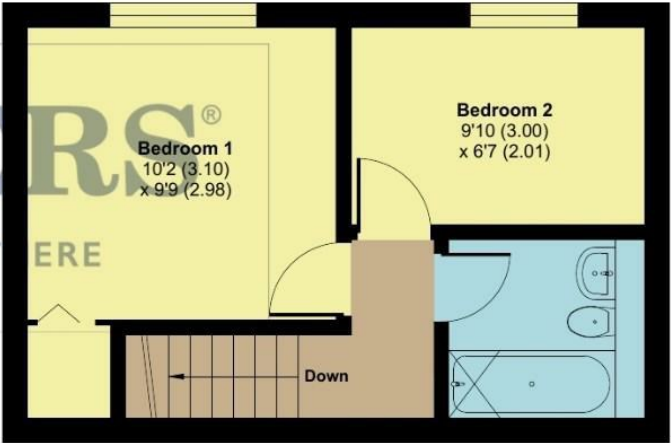
Hunters Selby 23 Finkle Street, Selby, YO8 4DT | 01757 210884
selby@hunters.com | www.hunters.com

George Street, Snaith, Goole, DN14

Approximate Area = 555 sq ft / 51.5 sq m
Outbuilding = 17 sq ft / 1.5 sq m
Total = 572 sq ft / 53 sq m
For identification only - Not to scale



GROUND FLOOR
APPROX FLOOR
AREA 26.4 SQ M
(285 SQ FT)



FIRST FLOOR
APPROX FLOOR
AREA 25 SQ M
(270 SQ FT)



Floor plan produced in accordance with RICS Property Measurement Standards incorporating International Property Measurement Standards (IPMS2 Residential). © nichecom 2024. Produced for Hunters Property Group. REF: 1261553.

