



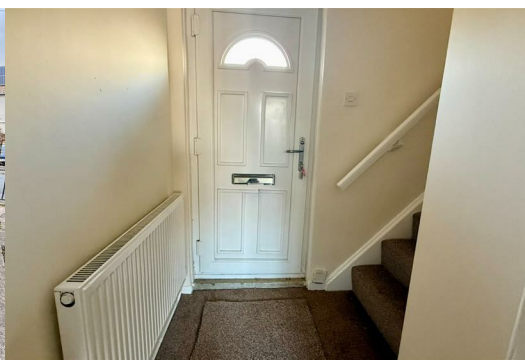
## Hendal Lane

Wakefield, WF2 7NT

£895 Per Month



**\*\* NO LONGER AVAILABLE \*\*** Presenting a spacious semi-detached property which has been recently decorated. Ideal for families, this home offers two generously sized double bedrooms, with one benefitting from built-in wardrobes for convenient storage solutions. The property features a welcoming reception room with new carpets throughout, providing a contemporary and comfortable living space. The open-plan kitchen boasts natural light, stylish wood countertops, and a practical breakfast area, perfect for casual dining or morning routines. In addition to its inviting interior, the property offers the luxury of both a private garden and dedicated parking. It is superbly located within an urban area, with excellent access to public transport links, motoway links, reputable nearby schools, local amenities, and scenic parks. This property combines modern comfort with everyday convenience, making it an excellent choice for those seeking a well-connected and accommodating family home. Early viewing is highly recommended.



### Area Map



### Floor Plans



### Energy Efficiency Graph



These particulars are intended to give a fair and reliable description of the property but no responsibility for any inaccuracy or error can be accepted and do not constitute an offer or contract. We have not tested any services or appliances (including central heating if fitted) referred to in these particulars and the purchasers are advised to satisfy themselves as to the working order and condition. If a property is unoccupied at any time there may be reconnection charges for any switched off/disconnected or drained services or appliances - All measurements are approximate. **THINKING OF SELLING?** If you are thinking of selling your home or just curious to discover the value of your property, Hunters would be pleased to provide free, no obligation sales and marketing advice. Even if your home is outside the area covered by our local offices we can arrange a Market Appraisal through our national network of Hunters estate agents.