

HUNTERS[®]

HERE TO GET *you* THERE



Birkdale Road

Dewsbury, WF13 4HN

£550 Per Month



- UNDER APPLICATION - NO MORE VIEWING AVAILABILITY -

1 Bedroom Flat – Dewsbury – £550 PCM – Popular Location – Off-Road Parking

Situated in a highly sought-after area of Dewsbury, this well-presented one-bedroom flat offers comfortable living with excellent access to local amenities, transport links, and the town centre.

The property briefly comprises a bright and spacious lounge, a fitted kitchen with a range of units, a generously sized double bedroom, and a modern bathroom. The layout is practical and well-suited to professionals or couples.

Externally, the property benefits from off-road parking, providing added convenience and security.

Key Information:

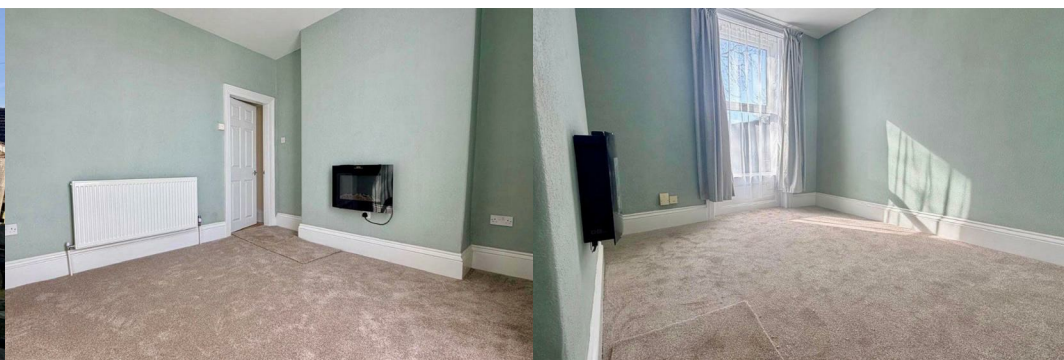
Rent: £550 PCM

Council Tax Band: A

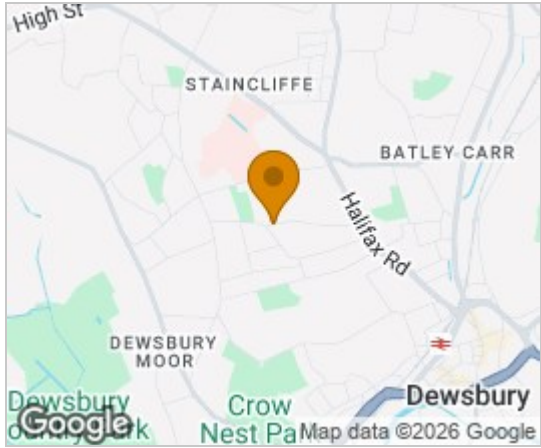
Off-road parking

Popular residential location

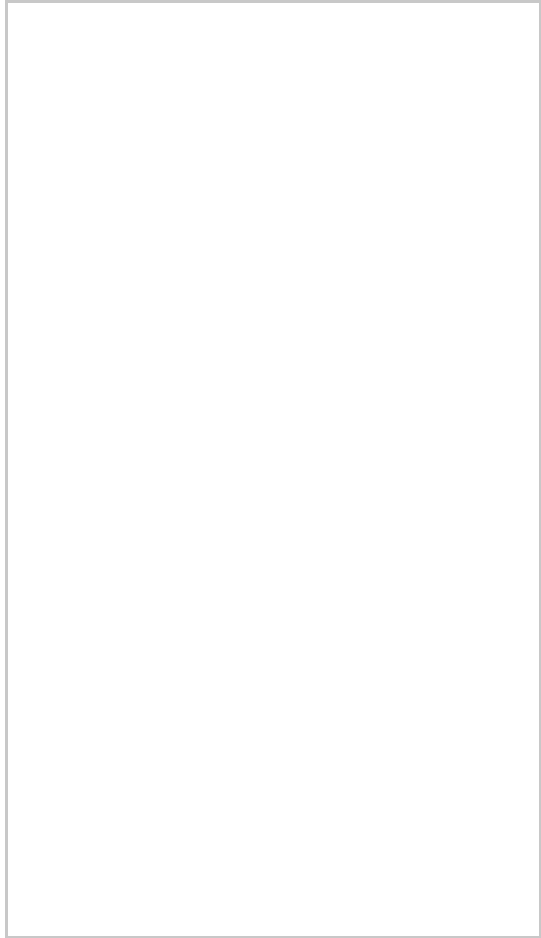
This is an excellent opportunity to secure a well-located home at an affordable price—early viewing is highly recommended.



Area Map



Floor Plans



Energy Efficiency Graph



These particulars are intended to give a fair and reliable description of the property but no responsibility for any inaccuracy or error can be accepted and do not constitute an offer or contract. We have not tested any services or appliances (including central heating if fitted) referred to in these particulars and the purchasers are advised to satisfy themselves as to the working order and condition. If a property is unoccupied at any time there may be reconnection charges for any switched off/disconnected or drained services or appliances - All measurements are approximate. **THINKING OF SELLING?** If you are thinking of selling your home or just curious to discover the value of your property, Hunters would be pleased to provide free, no obligation sales and marketing advice. Even if your home is outside the area covered by our local offices we can arrange a Market Appraisal through our national network of Hunters estate agents.