

HUNTERS[®]

HERE TO GET *you* THERE



Perry Vale

London, SE23 2JA

£1,750 Per Month



Offers over £1750 pcm. Currently being decorated. THREE DOUBLE BEDROOMS , communal gardens, in proximity of highly acclaimed schools and green spaces including Horniman Museum and Gardens, Available to sharers and families (Two households only due to licensing restrictions) OFF STREET PARKING



Details

Currently being painted and decorated and then available for immediate occupancy.

Hunters are proud to present to the market this spacious three double bedroom flat situated in the heart of Forest Hill.

The spacious kitchen consists of ample storage units and the large separate living room which is ideal for entertaining guests.

The communal gardens are perfect for summer picnics or for entertaining young children.

Whilst the images do a great job of communicating what this property offers, there are several things you can't see in the images that make this property truly stand out.

The property is in proximity to highly regarded school, local amenities and recreation.

The three double bedrooms make this property perfect for two sharers and families (two households only due to licensing restrictions).

Gardening and cleaning of the communal areas are conducted regularly maintaining the appearance of the property.

Off street parking is available for those who drive.

EPC rated: TBA

Council tax band: B (£1,498 p/yr)

TRANSPORT

Forest Hill station offers services on the East London Line (Orange Line) and Southern Rail. Some of the following travel times available to central London stations include:

London Bridge in approximately 17 minutes.

Canary Wharf in approximately in 23 minutes.

Shoreditch High Street in approximately 22 minutes.

Victoria station in approximately 30 minutes.

Alongside the train links you will find a number of bus routes on the south circular which include routes 122 and 185 to Crystal Palace and Victoria to name a few (and a night bus route).

LOCAL SHOPPING AND DINING:

As well as having a Sainsbury's, Forest Hill is well served with a variety of high quality independent shops, including a renowned traditional butcher. There are also gastro pubs, a gym, cafés, deli's and restaurants to name but a few of its excellent amenities.

The Sylvan Post, a well-known pub, Canvas and Cream and Stag

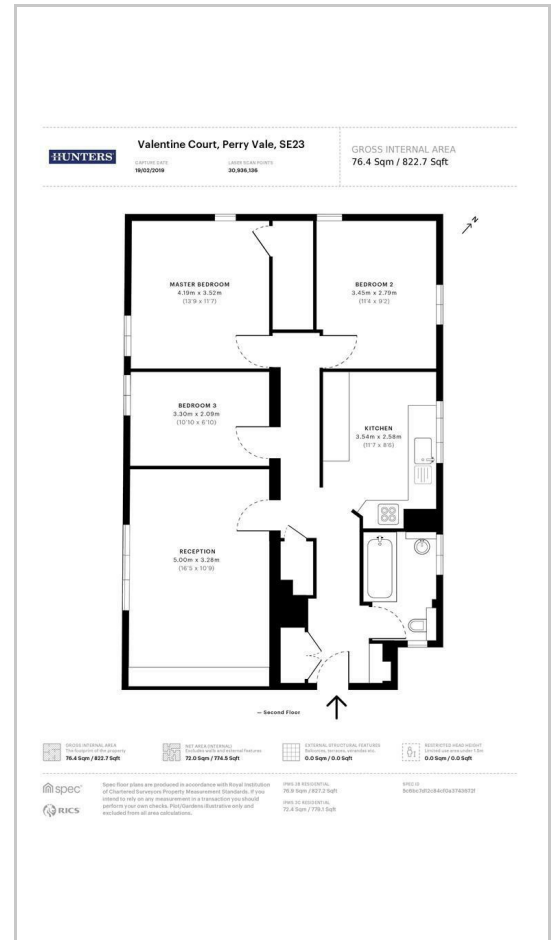
These particulars are intended to give a fair and reliable description of the property but no responsibility for any inaccuracy or error can be accepted and do not constitute an offer or contract. We have not tested any services or appliances (including central heating if fitted) referred to in these particulars and the purchasers are advised to satisfy themselves as to the working order and condition. If a property is unoccupied at any time there may be reconnection charges for any switched off/disconnected or drained services or appliances - All measurements are approximate. **THINKING OF SELLING?** If you are thinking of selling your home or just curious to discover the value of your property, Hunters would be pleased to provide free, no obligation sales and marketing advice. Even if your home is outside the area covered by our local offices we can arrange a Market Appraisal through our national network of Hunters estate agents.

10A Dartmouth Road, Forest Hill, SE23 3XU
Tel: 02030024089 Email: foresthill@hunters.com https://www.hunters.com

Area Map



Floor Plans



Energy Efficiency Graph

