

# HUNTERS®

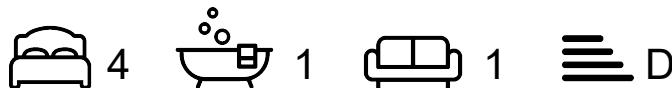
HERE TO GET *you* THERE



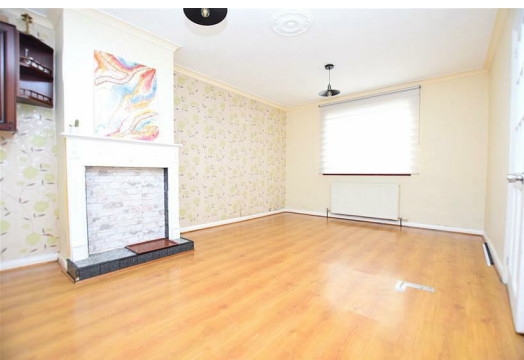
## East Road

Chadwell Heath, RM6 6XR

£2,200 Per Calendar Month



Hunters presents this beautiful family home located within easy reach of Chadwell Heath mainline station and the A12. The property boasts off street parking for, four spacious bedrooms on the first floor with a w.c in the master bedroom. Downstairs the property consists of a cosy living space as well as a family bathroom. To the rear is a beautifully maintained larger than life garden - SPECTACULAR SIZE making it a GARDENER'S PARADISE. Available immediately, call us now to arrange your viewing.



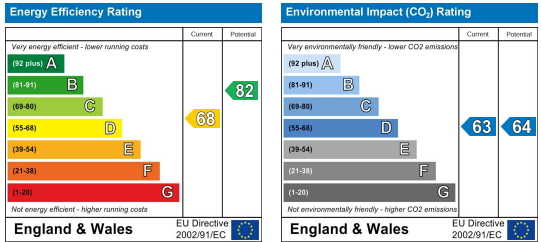
## Area Map



## Floor Plans



## Energy Efficiency Graph



These particulars are intended to give a fair and reliable description of the property but no responsibility for any inaccuracy or error can be accepted and do not constitute an offer or contract. We have not tested any services or appliances (including central heating if fitted) referred to in these particulars and the purchasers are advised to satisfy themselves as to the working order and condition. If a property is unoccupied at any time there may be reconnection charges for any switched off/disconnected or drained services or appliances - All measurements are approximate. **THINKING OF SELLING?** If you are thinking of selling your home or just curious to discover the value of your property, Hunters would be pleased to provide free, no obligation sales and marketing advice. Even if your home is outside the area covered by our local offices we can arrange a Market Appraisal through our national network of Hunters estate agents.