



Waterhouse Avenue, Maidstone, Kent, ME14 2FJ

- Chain Free
- Open plan living/ kitchen
- Newly decorated
- Secure underground allocated parking space
- Balcony
- Third floor apartment
- Ensuite to master bedroom
- Two Double bedrooms
- Communal lift to block

Guide Price £250,000 - £270,000

TENURE LEASEHOLD



Waterhouse Avenue, Maidstone, Kent, ME14 2FJ

DESCRIPTION

GUIDE PRICE £250,000 - £270,000

Welcome to this exquisite apartment in Guinevere point, Waterhouse Avenue, Maidstone. This newly decorated, stunning property, built in 2020, offers a modern living experience with a generous well-designed space. Situated on the third floor, this flat boasts two double bedrooms, including a master suite with fitted mirrored sliding wardrobes and an ensuite bathroom, ensuring privacy and convenience for residents.

The property features a bright and inviting open plan living space with doors opening onto the balcony, perfect for relaxation or entertaining guests. The immaculate condition of the flat reflects the quality of its construction and design, making it an ideal choice for those seeking a contemporary home. This apartment also boasts a fully tiled family bathroom with shower, vanity unit, digital bathroom mirror and a generous walk in storage cupboard. The modern high gloss kitchen, has a generous range of wall and base units, along with integrated appliances.

Residents will appreciate the convenience of an elevator, providing easy access to the flat, as well as a secure, gated, dedicated parking space, a valuable asset in this bustling area.

This flat is perfect for first-time buyers, young professionals, or those looking to downsize without compromising on quality. With its modern amenities and prime location, this property is a wonderful opportunity to enjoy comfortable living in Maidstone. Don't miss the chance to make this stunning flat your new home.

Lease Years: 999 Years Remaining: 994

Ground Rent: £350.00

Service Charge: £2,040.00

Services: Mains gas and mains electricity

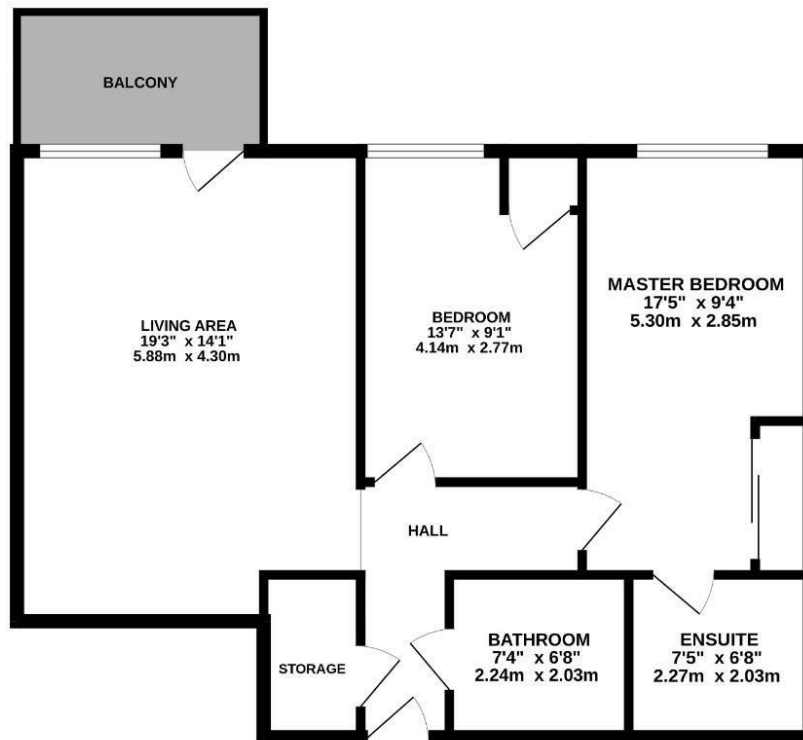
Flood Risk: Very low Each year there is a chance of flooding of less than 1 in 1000 (0.1%)

Broadband: 80mb Superfast 1800mb Ultrafast





3RD FLOOR



Whilst every attempt has been made to ensure the accuracy of the floorplan contained here, measurements of doors, windows, rooms and any other items are approximate and no responsibility is taken for any error, omission or mis-statement. This plan is for illustrative purposes only and should be used as such by any prospective purchaser. The services, systems and appliances shown have not been tested and no guarantee as to their condition or efficiency can be given.
Made with Metropix C50025

Viewings

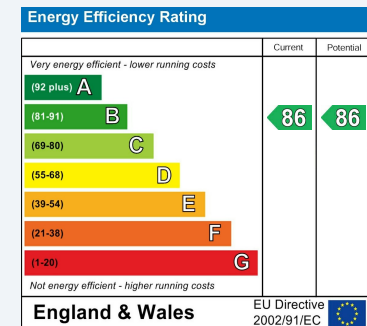
Please contact Maidstone@hunters.com, if you wish to arrange a viewing appointment for this property or require further information.

Valuations

For a valuation of your property, please email the team with your property details, contact information and the times you are available.

ENERGY PERFORMANCE CERTIFICATE

The energy efficiency rating is a measure of the overall efficacy of a home. The higher the rating the more energy efficient the home is and the lower the fuel bills will be.



These particulars are intended to give a fair and reliable description of the property but no responsibility for any inaccuracy or error can be accepted and do not constitute an offer or contract. We have not tested any services or appliances (including central heating if fitted) referred to in these particulars and the purchasers are advised to satisfy themselves as to the working order and condition. If a property is unoccupied at any time there may be reconnection charges for any switched off/disconnected or drained services or appliances - All measurements are approximate.

THINKING OF SELLING? If you are thinking of selling your home or just curious to discover the value of your property, Hunters would be pleased to provide free, no obligation sales and marketing advice. Even if your home is outside the area covered by our local offices we can arrange a Market Appraisal through our national network of Hunters estate agents.