

HUNTERS[®]

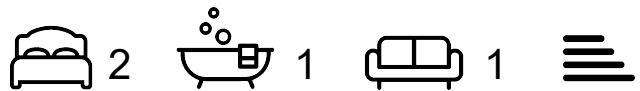
HERE TO GET *you* THERE



Jubilee Court

Kingsbury, Tamworth, B78 2LL

£695 Per Month



Hunters Lettings in Tamworth are delighted to present this Two Bedroom Fantastic Duplex Apartment TO LET.

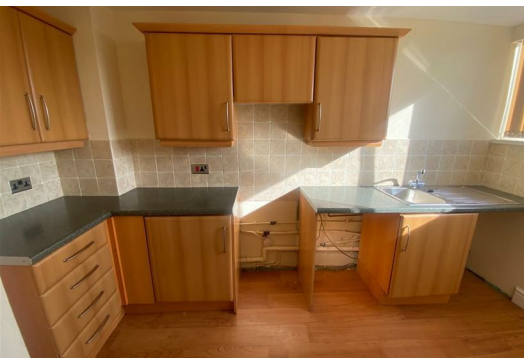
Set within a popular location in Kingsbury, with easy access to the M42 and local amenities, the property briefly comprises;

Two Double Bedrooms, Spacious Lounge area perfect for entertaining, Fitted Kitchen and a Modern Fitted Bathroom with both separate Bath and Shower cubicle.

The property is available early March and can also be let using the alternative deposit scheme.

Viewings are available by appointment only!

EPC- TBC
Council Tax Band- A



Area Map



Floor Plans



Energy Efficiency Graph



These particulars are intended to give a fair and reliable description of the property but no responsibility for any inaccuracy or error can be accepted and do not constitute an offer or contract. We have not tested any services or appliances (including central heating if fitted) referred to in these particulars and the purchasers are advised to satisfy themselves as to the working order and condition. If a property is unoccupied at any time there may be reconnection charges for any switched off/disconnected or drained services or appliances - All measurements are approximate. **THINKING OF SELLING?** If you are thinking of selling your home or just curious to discover the value of your property, Hunters would be pleased to provide free, no obligation sales and marketing advice. Even if your home is outside the area covered by our local offices we can arrange a Market Appraisal through our national network of Hunters estate agents.