

HUNTERS®

HERE TO GET *you* THERE



Middlehope Grove

Bishop Auckland, DL14 0SH

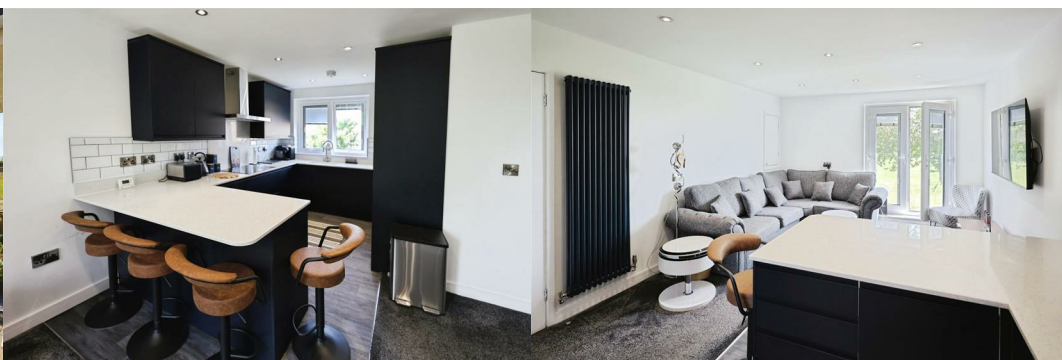
£650 Per Month



two bedroomed first floor flat located on Middlehope Grove in Bishop Auckland. The current owners have carried out many improvements to the property such as a full rewire and replaster throughout including ceilings, new UPVC windows, boiler and radiators, doors, woodwork, carpets and more. The loft has been fully boarded providing plenty of additional storage and all plug sockets include USB ports.

Located just a short distance from both Bishop Auckland's town centre and Tindale's retail park, allows for access to a large array of amenities, including supermarkets, healthcare services, shops and also an extensive public transport system, providing for access to both the neighbouring villages as well as to further afield places including Darlington, Durham, Newcastle and York. It is also great for commuters with easy access to the A688.

In brief the property comprises; an entrance hall with stairs leading onto the landing and through into the open plan living room/kitchen, two bedrooms and family bathroom. Externally the property has an enclosed garden to the front, mainly laid to lawn with perimeter fences, plants and shrubbery.



Living Room 11'7" x 15'8" (3.55 x 4.8)
Bright and spacious living room, providing ample space for furniture, neutral decor and Juliet balcony provides plenty of natural light.

Kitchen 9'6" x 6'10" (2.9 x 2.1)
Open plan from the living room, the kitchen has been recently renovated and is fitted with a range of modern wall base and drawer units, complementing quartz work surfaces, tiled splashbacks and sink/drainage unit. Benefiting from an integrated oven and tumble dryer, microwave, hob, overhead extractor hood, fridge/freezer and washing machine, along with space for further free standing appliances and breakfast bar providing a great seating space.

Master Bedroom 12'9" x 8'10" (3.9 x 2.7)
The master bedroom provides space for a king sized bed, further furniture, neutral decor and window allowing lots of natural light. Fitted wardrobes with sliding doors provide plenty of storage space.

Bedroom Two 9'10" x 9'7" (3.0 x 2.93)
The second bedroom is another spacious double bedroom with space for further furniture, neutral decor and window to the rear elevation.

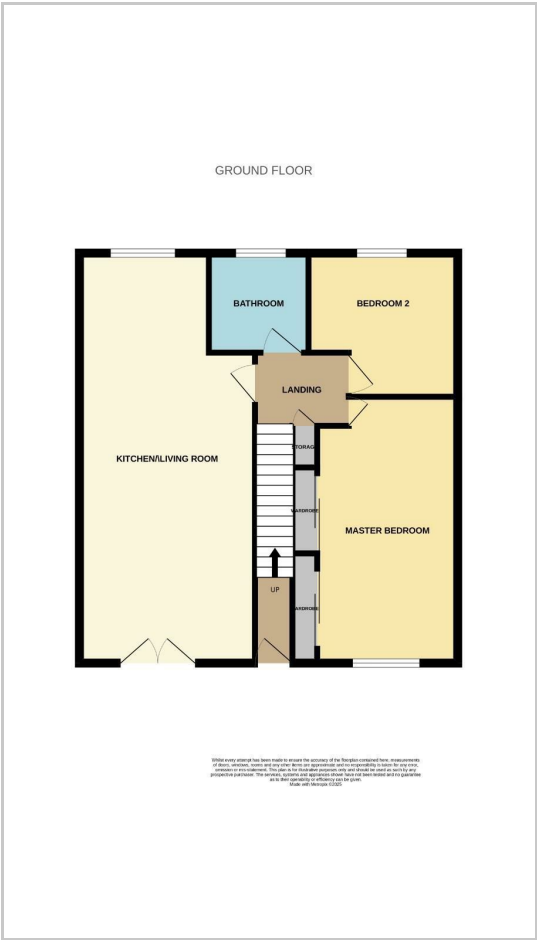
Bathroom 6'6" x 6'2" (2.0 x 1.9)
The fully tiled bathroom contains a large shower cubicle, heated towel rail, wash hand basin and WC. Frosted window to the rear elevation.

External
Externally the property has an enclosed garden to the front, mainly laid to lawn with perimeter fences, plants and shrubbery.

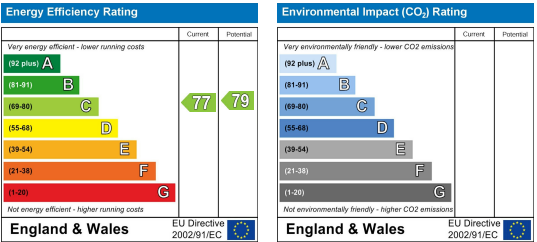
Area Map



Floor Plans



Energy Efficiency Graph



These particulars are intended to give a fair and reliable description of the property but no responsibility for any inaccuracy or error can be accepted and do not constitute an offer or contract. We have not tested any services or appliances (including central heating if fitted) referred to in these particulars and the purchasers are advised to satisfy themselves as to the working order and condition. If a property is unoccupied at any time there may be reconnection charges for any switched off/disconnected or drained services or appliances - All measurements are approximate.

THINKING OF SELLING? If you are thinking of selling your home or just curious to discover the value of your property, Hunters would be pleased to provide free, no obligation sales and marketing advice. Even if your home is outside the area covered by our local offices we can arrange a Market Appraisal through our national network of Hunters estate agents.