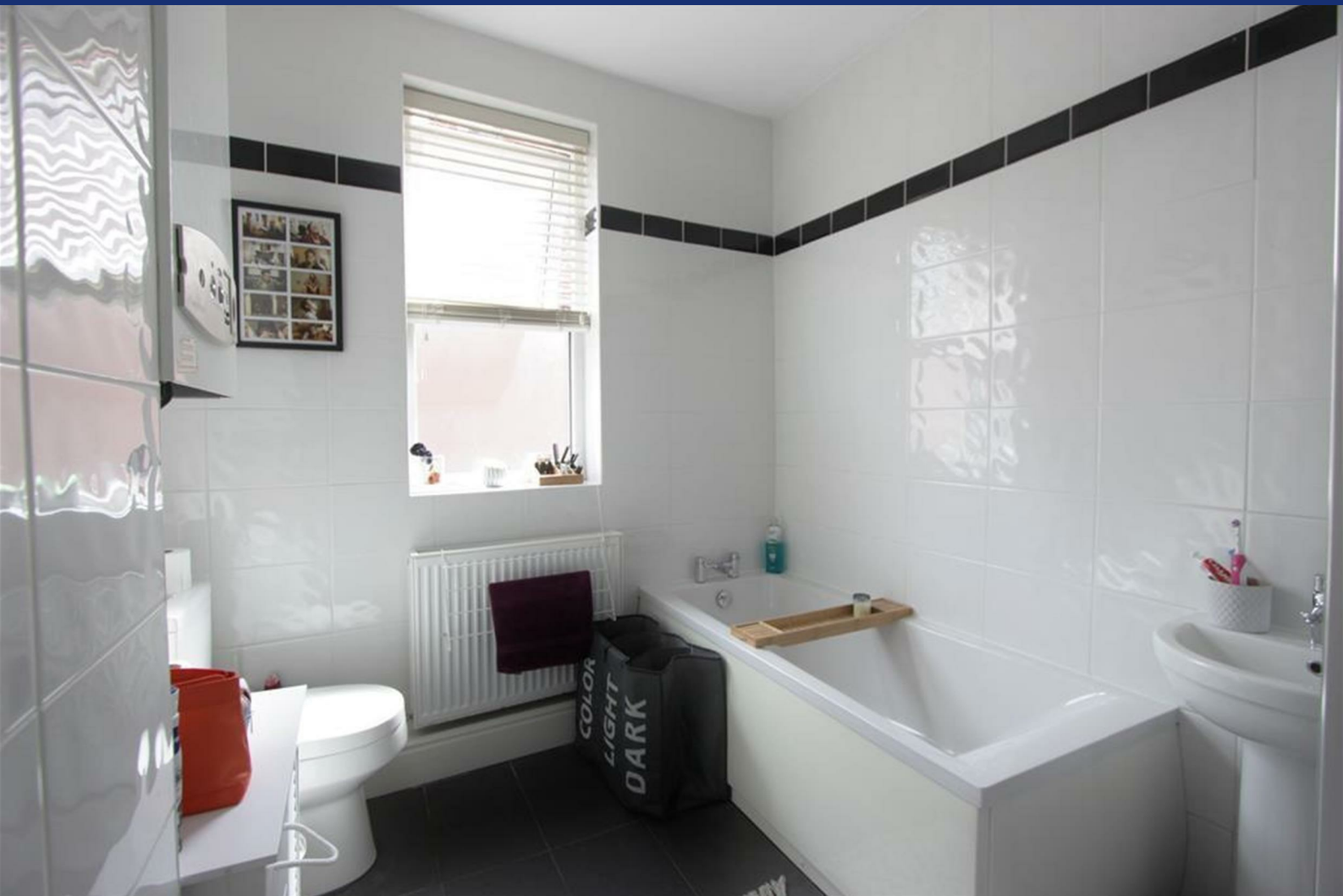


HUNTERS[®]

HERE TO GET *you* THERE



Onslow Road

S11 7AF

£1,100 Per Calendar Month



*AVAILABLE 13/02/2026 * 2 BEDROOM APARTMENT CLOSE TO ENDCLIFFE PARK, GREYSTONES.

Located just off Ecclesall Road on a quiet residential street, this area is highly sought after for immediate access to a variety of shops, restaurants schools and parks close by with great public transport links into the City Centre and plenty of on-street parking.

This 2 bedroom apartment is offered on a fully-furnished basis and briefly comprises; living room with sofa, coffee table and dining table, kitchen/diner fully equipped with electric oven and hob, double fridge-freezer, washer-drier and ample cupboard space, to the top floor there is a front-facing double bedroom with a double bed and an en-suite shower room and rear-facing second bedroom with a sofa bed.



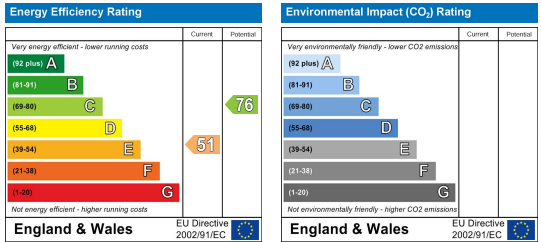
Area Map



Floor Plans



Energy Efficiency Graph



These particulars are intended to give a fair and reliable description of the property but no responsibility for any inaccuracy or error can be accepted and do not constitute an offer or contract. We have not tested any services or appliances (including central heating if fitted) referred to in these particulars and the purchasers are advised to satisfy themselves as to the working order and condition. If a property is unoccupied at any time there may be reconnection charges for any switched off/disconnected or drained services or appliances - All measurements are approximate. **THINKING OF SELLING?** If you are thinking of selling your home or just curious to discover the value of your property, Hunters would be pleased to provide free, no obligation sales and marketing advice. Even if your home is outside the area covered by our local offices we can arrange a Market Appraisal through our national network of Hunters estate agents.

Tel: Email: