

# HUNTERS®

HERE TO GET *you* THERE



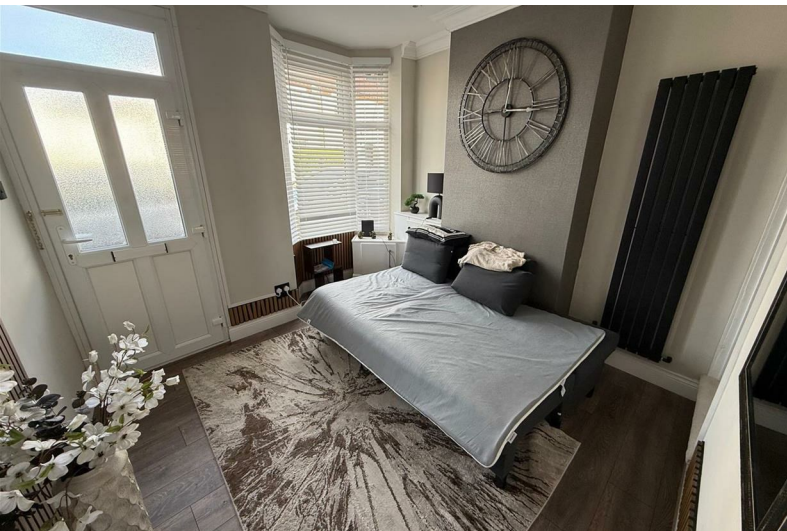
Green Street

Stourbridge, DY8 3TS

£185,000



Council Tax: A

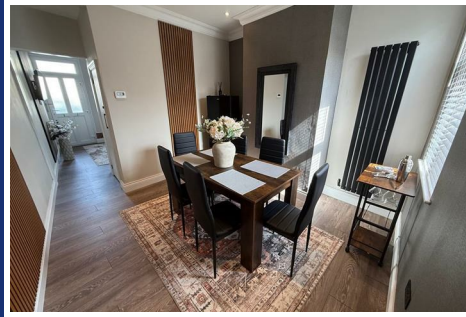




# 51 Green Street

Stourbridge, DY8 3TS

£185,000



## Front Of The Property

With a path leading to the front door.

## Lounge

11'6" x 10'9" (3.51 x 3.29m )

With a door leading from the front, recessed spotlights, double glazed bay window to front, stairs to the first floor landing and a vertical central heating radiator.

## Dining Room

10'11" x 10'9" (3.34 x 3.28)

With a door leading from the lounge, under stairs storage cupboard, recessed spotlights, double glazed window to rear, door to kitchen and a vertical central heating radiator.

## Kitchen

14'1" x 5'6" (4.31 x 1.68 )

With a door leading from the dining room, fitted with a range of modern wall and base units, work surfaces with matching splashback, stainless steel sink and drainer, integrated electric oven, electric hob with extractor fan above, space for a washing machine, wall mounted boiler, double glazed window to rear and a door to the wet room.

## Wet Room

8'11" x 5'4" (2.72 x 1.63)

With a door leading from the kitchen, contemporary shower area, WC, wash hand basin set into vanity unit, fully tiled walls, tiled floor, double glazed window to rear, recessed spotlights and a heated towel rail.

## Landing

With stairs leading from the dining room, loft access and doors to various rooms.

## Bedroom One

10'11" x 10'9" (3.34 x 3.3)

With a door leading from the first floor landing, recessed spotlights, double glazed window to rear and a vertical central heating radiator.

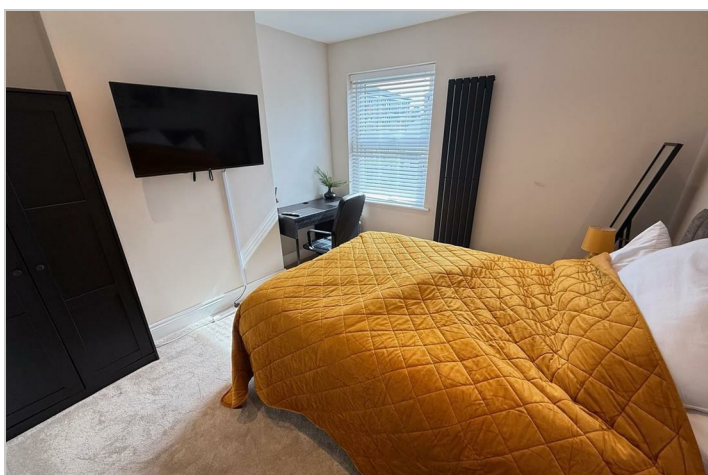
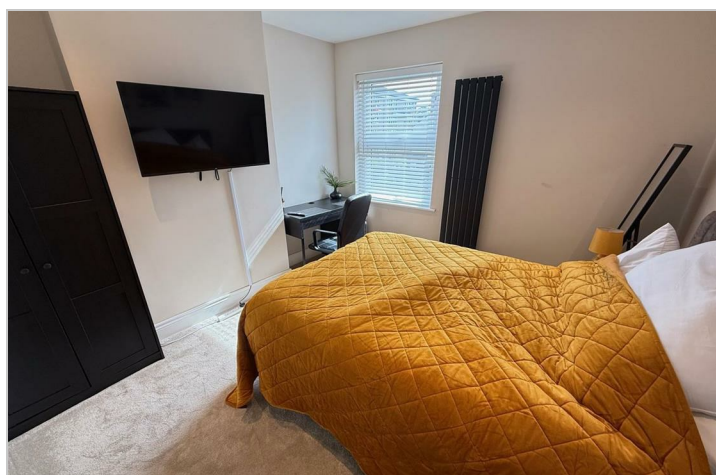
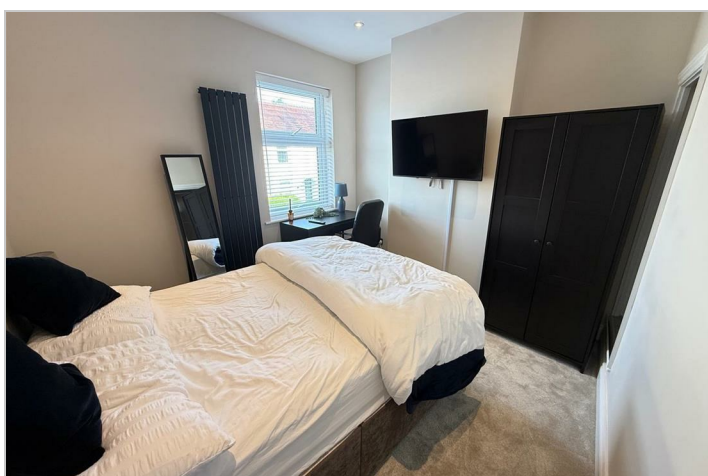
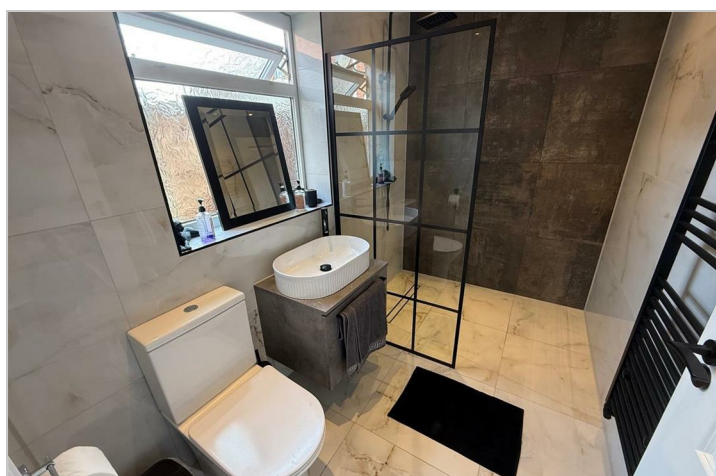
### Bedroom Two

10'9" x 9'10" (3.3 x 3)

With a door leading from the first floor landing, recessed spotlights, double glazed window to front, built in storage cupboard and a vertical central heating radiator.

### Rear Courtyard

With a double glazed door from the kitchen to a small courtyard area with a gate leading to rear access.



Road Map



Hybrid Map



Terrain Map



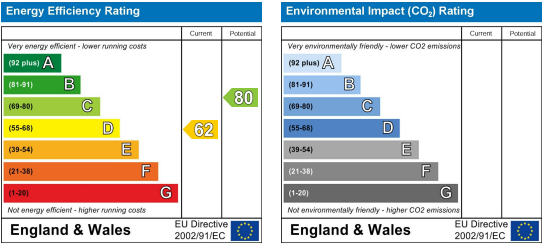
Floor Plan



Viewing

Please contact our Hunters Stourbridge Office on 01384 443331 if you wish to arrange a viewing appointment for this property or require further information.

Energy Efficiency Graph



These particulars are intended to give a fair and reliable description of the property but no responsibility for any inaccuracy or error can be accepted and do not constitute an offer or contract. We have not tested any services or appliances (including central heating if fitted) referred to in these particulars and the purchasers are advised to satisfy themselves as to the working order and condition. If a property is unoccupied at any time there may be reconnection charges for any switched off/disconnected or drained services or appliances - All measurements are approximate. **THINKING OF SELLING?** If you are thinking of selling your home or just curious to discover the value of your property, Hunters would be pleased to provide free, no obligation sales and marketing advice. Even if your home is outside the area covered by our local offices we can arrange a Market Appraisal through our national network of Hunters estate agents.