

HUNTERS[®]

HERE TO GET *you* THERE



St. Peters Road

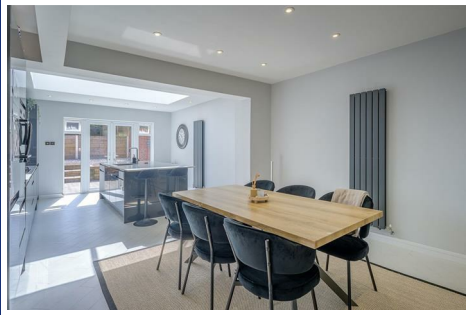
Pedmore, Stourbridge, DY9 0TY



St. Peters Road

Pedmore, Stourbridge, DY9 0TY

£425,000



Front of The Property

To the front of the property there is a large block paved driveway, steps leading up to storm porch, lighting, double doors to detached garage and gated side access to rear garden.

Entrance Hall

With double glazed composite door leading from the front of the property, stairs to first floor landing, storage cupboard, door to lounge and open to kitchen diner, herringbone floor and a vertical column central heating radiator.

Lounge

12'9" x 11'9" (3.9 x 3.6)

With a door leading from entrance hall, space for seating, double glazed bay window to front and a central heating radiator.

Kitchen Diner

24'11" x 12'9" (7.6 x 3.9)

Open from entrance hall and door to utility, fitted with a range of matching wall and base units, Quartz worksurfaces with matching upstands, integrated double oven, separate gas hob with stainless steel cooker hood over, fridge freezer, dishwasher, instant hot water tap, two part sink, breakfast bar and centre island, Amtico floor, space for seating and dining, recessed spotlights, lantern window, double glazed french doors and windows to rear garden and two vertical column central heating radiators.

Utility

12'9" x 4'11" (3.9 x 1.5)

With doors leading from kitchen diner and shower room, fitted with matching wall and base units, matching upstands, stainless steel bowl sink and drainer, plumbing for washing machine, housed central heating boiler, Amtico floor, extractor, double glazed window to side and a central heating radiator.

Shower Room

With a door leading from utility, double walk-in shower with separate shower attachment, WC, wash hand basin set into vanity unit, illuminate mirror, Amtico floor, recessed spotlights, extractor and a column central heating towel rail.

Landing

With stairs leading from entrance hall, doors to various rooms, loft access with pull-down ladders and double glazed window to side.

Bedroom One

13'9" x 10'9" (4.2 x 3.3)

With a door leading from landing, fitted wardrobes with space for flat screen TV, recessed spotlights, double glazed bay window to front and a central heating radiator.

Bedroom Two

10'9" x 9'10" (3.3 x 3)

With a door leading from landing, recessed spotlights, double glazed window to rear and a central heating radiator.

Bedroom Three

6'10" x 6'10" (2.1 x 2.1)

With a door leading from landing, recessed spotlights, double glazed window to front and a central heating radiator.

Shower Room

Garage

15'8" x 7'10" (4.8 x 2.4)

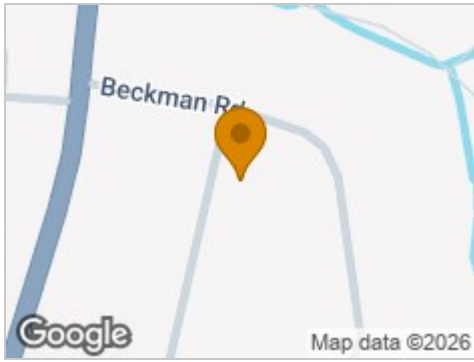
With double doors leading from the front and side, useful storage space, light and power.

Garden

With double glazed french doors leading from kitchen diner to block paved and chipping stone seating, elevated lawn, outside power, tap and gated side access leading to the front of the property.



Road Map



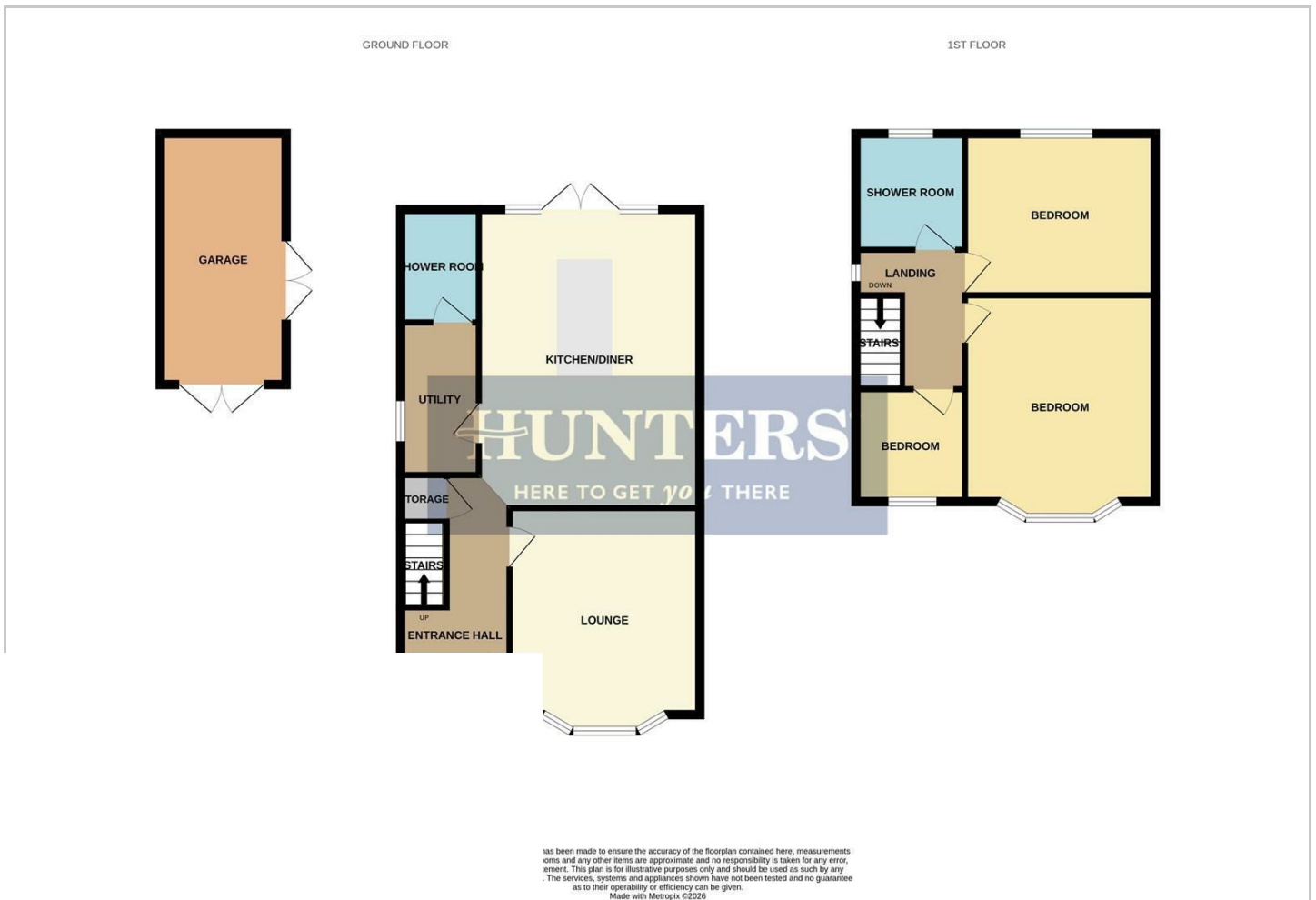
Hybrid Map



Terrain Map

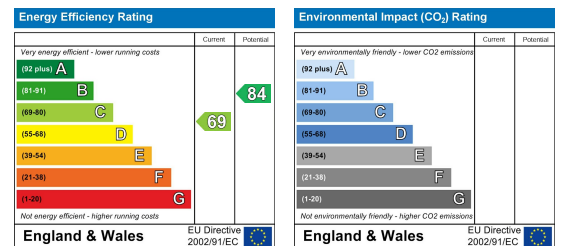


Floor Plan



Energy Efficiency Graph

pointment for this



These particulars are intended to give a fair and reliable description of the property but no responsibility for any inaccuracy or error can be accepted and do not constitute an offer or contract. We have not tested any services or appliances (including central heating if fitted) referred to in these particulars and the purchasers are advised to satisfy themselves as to the working order and condition. If a property is unoccupied at any time there may be reconnection charges for any switched off/disconnected or drained services or appliances - All measurements are approximate. **THINKING OF SELLING?** If you are thinking of selling your home or just curious to discover the value of your property, Hunters would be pleased to provide free, no obligation sales and marketing advice. Even if your home is outside the area covered by our local offices we can arrange a Market Appraisal through our national network of Hunters estate agents.