

HUNTERS[®]

HERE TO GET *you* THERE



Margaret Close

Quarry Bank, DY5 2XD



Margaret Close

Quarry Bank, DY5 2XD

£300,000



Front of the Property

To the front of the property there is a block paved and chipping stone driveway, mature shrubs, outdoor lighting, double glazed door to entrance hall, up and over garage door and gated side access leading to the rear garden.

Entrance Hall

With a double glazed door leading from the front of the property, stairs to first floor landing, storage cupboard, dado rail, wall lights and a central heating radiator.

Lounge Diner

22'3" x 12'5" (max) (6.80 x 3.80 (max))

With a door leading from entrance hall, feature fire place with electric fire and marble hearth, generous space for seating and dining, dado rail, double glazed bow window to front, further double glazed patio doors to rear and a central heating radiator.

Kitchen

10'2" x 9'10" (3.10 x 3.00)

With a door leading from entrance hall, fitted with a range of matching wall and base units with work surface over, tiled splashback, stainless steel sink and drainer, space for oven, cooker hood over, space for fridge and freezer, plumbing for washing machine, laminate floor, breakfast bar, double glazed window and door to rear garden and a central heating radiator.

Landing

With stairs leading from entrance hall, doors to various rooms, loft access, wall lights, dado rail and double glazed window to side.

Bedroom One

14'1" x 10'2" (4.30 x 3.10)

With a door leading from landing, dado rail, double glazed window to rear and a central heating radiator.

Bedroom Two

11'9" x 9'10" (3.60 x 3.00)

With a door leading from landing, dado rail, double glazed window to front and a central heating radiator.

Bedroom Three

10'9" x 9'10" (3.30 x 3.00)

With a door leading from landing, wardrobe/storage cupboard, double glazed window to front and a central heating radiator.

Bathroom

With a door leading from landing, bath with shower over, WC, wash hand basin, part tiled walls, storage cupboard housing central heating boiler, double glazed window to rear and a central heating radiator.

Garage

15'5" x 8'2" (4.7 x 2.5)

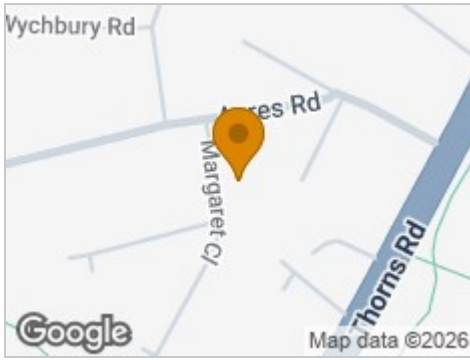
With up and over door leading from the front of the property, light, power and useful storage space.

Garden

With a double glazed door leading from kitchen to a paved patio seating area with manicured lawn beyond, path leading to further seating, decorative woodchip and chipping stone borders and gated side access leading to the front of the property.



Road Map



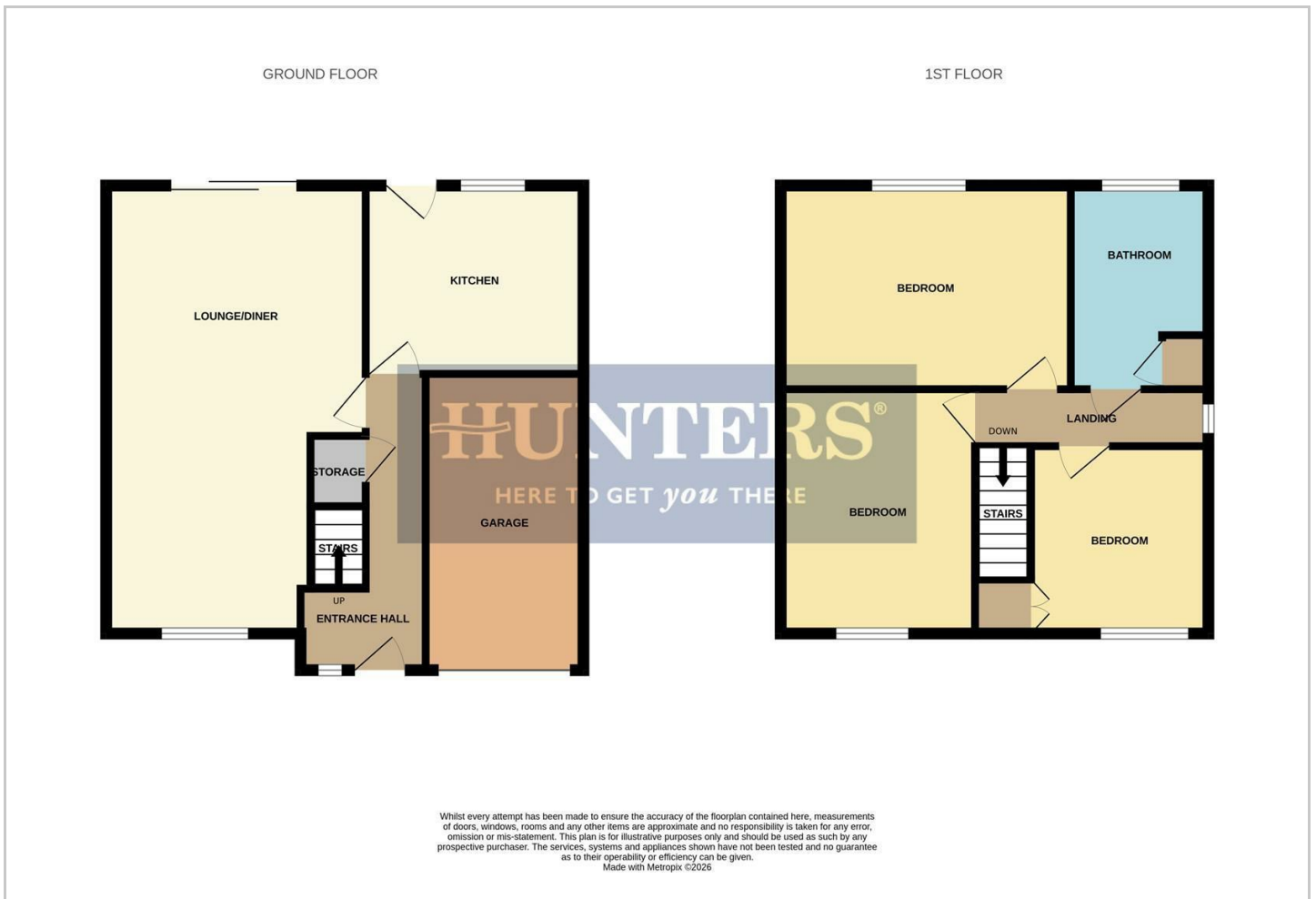
Hybrid Map



Terrain Map

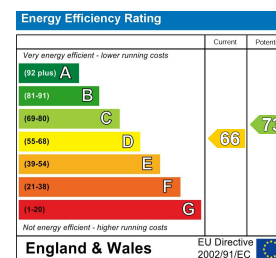


Floor Plan



Please contact our Hunters Stourbridge Office on 01384 443331 if you wish to arrange a viewing appointment for this property or require further information.

Energy Efficiency Graph



These particulars are intended to give a fair and reliable description of the property but no responsibility for any inaccuracy or error can be accepted and do not constitute an offer or contract. We have not tested any services or appliances (including central heating if fitted) referred to in these particulars and the purchasers are advised to satisfy themselves as to the working order and condition. If a property is unoccupied at any time there may be reconnection charges for any switched off/disconnected or drained services or appliances - All measurements are approximate. **THINKING OF SELLING?** If you are thinking of selling your home or just curious to discover the value of your property, Hunters would be pleased to provide free, no obligation sales and marketing advice. Even if your home is outside the area covered by our local offices we can arrange a Market Appraisal through our national network of Hunters estate agents.