



House - Semi-Detached (EPC Rating:)

**GROVE HALL ROAD, BUSHEY, WD23
2EH**
Per Month
£2,500 Per

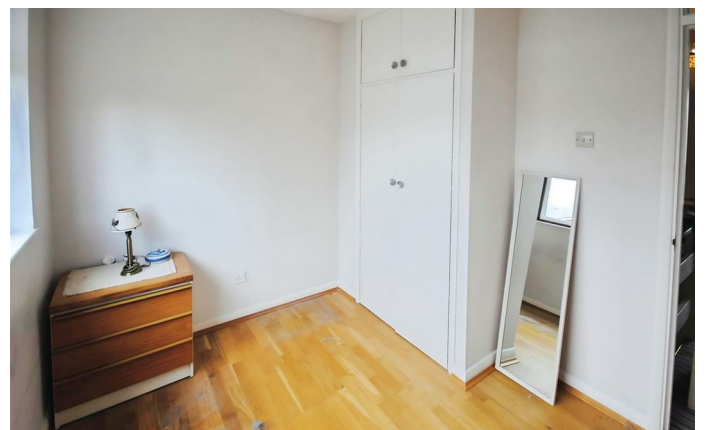
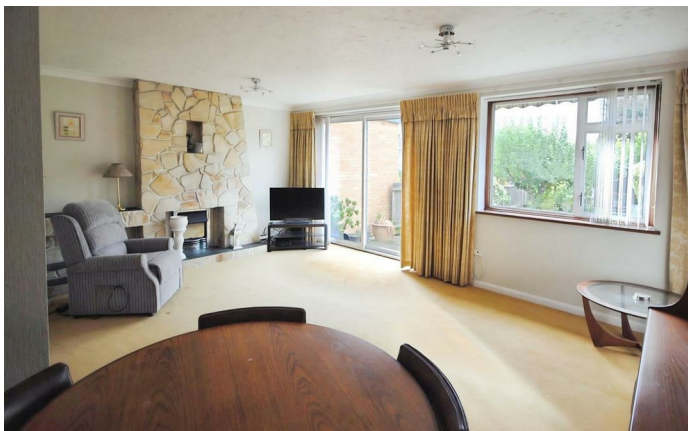
4 Bedroom House - Semi-Detached located in Bushey

Located in the desirable area of Bushey, on Grove Hall Road, this charming four-bedroom family home offers a perfect blend of comfort and convenience. The property is ideally situated close to Bushey mainline station, Watford town centre, providing easy access to a variety of shops, schools and leisure facilities, as well as quick connections to major motorways.

Upon entering the ground floor, you will find a well-appointed kitchen that leads to a practical side area, allowing for convenient storage and access from the front to the back of the property without needing to enter the main house. This level also features a ground floor W.C. and direct access to the garage, enhancing the functionality of the home. The spacious lounge diner has patio doors that open onto a delightful rear garden. This outdoor space is perfect for family gatherings or quiet evenings, featuring a lovely patio area, a lush grass lawn and mature shrubs and trees, along with a handy shed for additional storage.

The first floor comprises a master bedroom complete with fitted wardrobes, providing ample storage space. There are also three additional bedrooms, each equipped with cupboards, making this home ideal for a growing family. A modern shower room with a walk-in shower completes this level, offering both style and practicality.

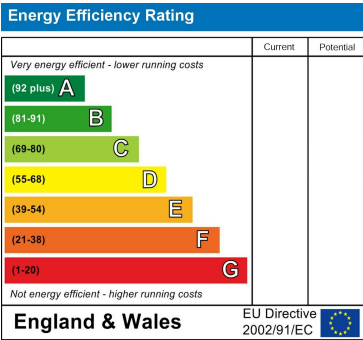
The property benefits from off-road parking for two cars and a charming front garden, adding to its appeal. This family home in Bushey is a wonderful opportunity for those seeking a comfortable and well-located residence.



WATFORD LETTINGS | 12 MARKET STREET, WATFORD, HERTFORDSHIRE, WD18 0PD

Council Tax Band

Energy Performance Graph



Call us on
01923 220 012
enquiries@warrenanthony.co.uk
www.warrenanthony.co.uk

Agents Note: Whilst every care has been taken to prepare these particulars, they are for guidance purposes only. All measurements are approximate and are for general guidance purposes only and whilst every care has been taken to ensure their accuracy, they should not be relied upon and potential buyers are advised to recheck the

