



Apartment (EPC Rating:)

GADE CLOSE, RICKMANSWORTH
ROAD, WATFORD, WD18 7JH
PCM

£1,475 PCM

2 Bedroom Apartment located in Watford

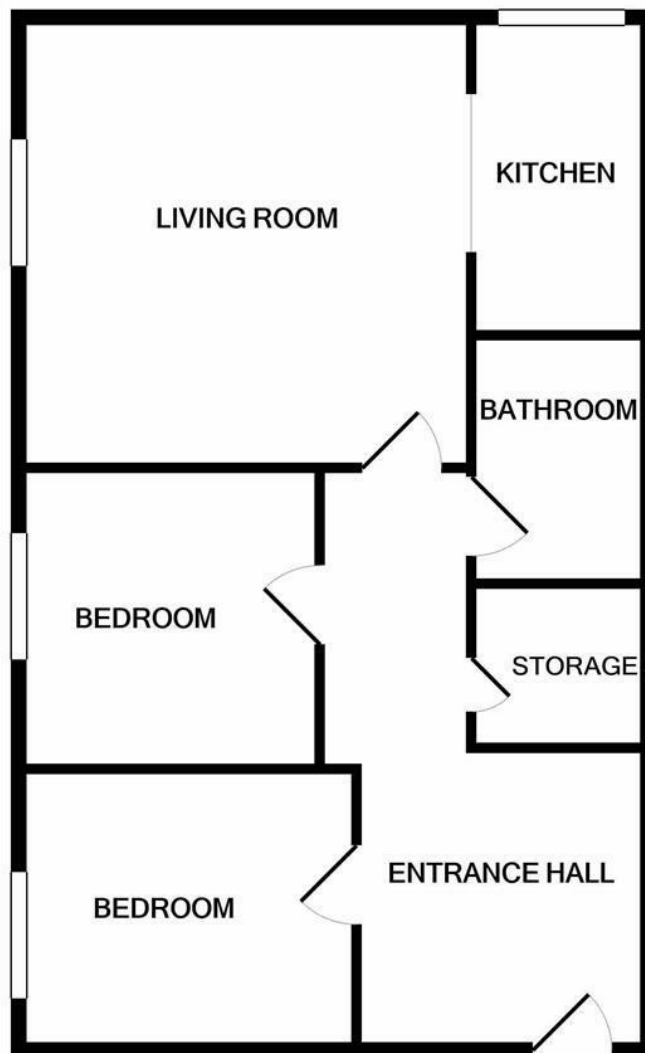
TWO BEDROOM APARTMENT CLOSE TO WATFORD MET LINE STATION, CROXLEY BUSINESS PARK, CASSIOBURY PARK AND WATFORD TOWN CENTRE. ELECTRIC HEATING THROUGHOUT. COUNCIL TAX BAND C.

Available early January 2025 is this ground floor two bedroom apartment. There is a hallway with storage, two bedrooms, one with fitted wardrobes, a bathroom with power shower plus the spacious and bright lounge diner is open to the kitchen. The kitchen comes with washing machine, cooker and fridge freezer. One allocated parking space is available and the apartment is offered unfurnished. Available to move late December.

0.4 MILES TO METROPOLITAN STATION APPROACH.
0.4 MILES TO WATFORD GRAMMAR SCHOOL FOR BOYS.
0.6 MILES TO MORRISONS,
0.6 MILES CROXLEY DANES SCHOOL.
0.8 MILES TO WESTFIELD ACADEMY.
0.8 MILES TO CASSIOBURY PARK,
1.1 MILES TO CROXLEY STATION.
1.5 MILES TO WATFORD JUNCTION RAILWAY STATION.
1.6 MILES TO WATFORD GRAMMAR SCHOOL FOR GIRLS.



WATFORD LETTINGS | 12 MARKET STREET, WATFORD, HERTFORDSHIRE, WD18 0PD



Whilst every attempt has been made to ensure the accuracy of the floor plan contained here, measurements of doors, windows, rooms and any other items are approximate and no responsibility is taken for any error, omission, or mis-statement. This plan is for illustrative purposes only and should be used as such by any prospective purchaser. The services, systems and appliances shown have not been tested and no guarantee as to their operability or efficiency can be given
Made with Metropix ©2022

Council Tax Band

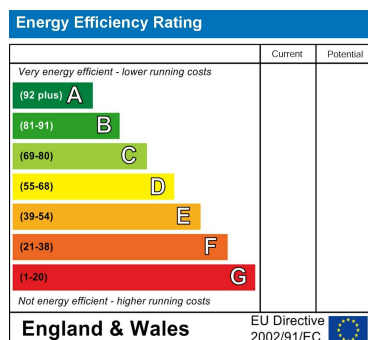
Call us on

01923 220 012

Energy Performance Graph

enquiries@warrenanthony.co.uk

www.warrenanthony.co.uk



Agents Note: Whilst every care has been taken to prepare these particulars, they are for guidance purposes only. All measurements are approximate and are for general guidance purposes only and whilst every care has been taken to ensure their accuracy, they should not be relied upon and potential buyers are advised to recheck the