



Not specified (EPC Rating: C)

**KING GEORGES AVENUE, WATFORD,  
WD18 7QE**

Per Calendar Month

**£1,200 Per**

# 1 Bedroom Not specified located in Watford

ONE BEDROOM APARTMENT IN A LOVELY DEVELOPMENT CLOSE TO WATFORD METROPOLITAN STATION - AVAILABLE JUNE 2026

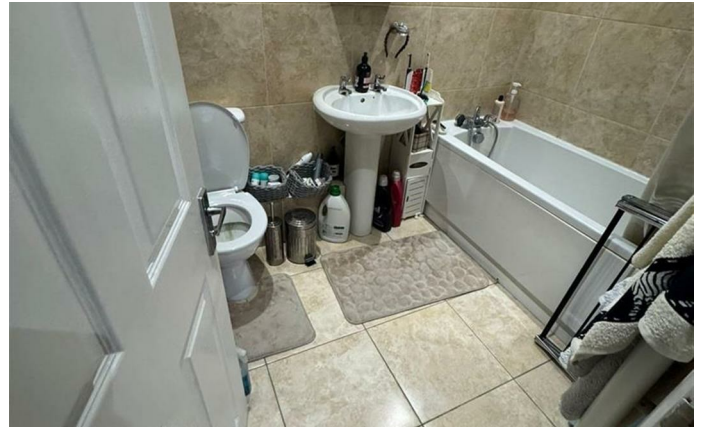
A well-presented one-bedroom first-floor apartment ideally situated on King Georges Avenue, within easy walking distance of Watford Metropolitan Station and the beautiful Cassiobury Park.

This modern apartment features a bright open-plan living room and kitchen, a spacious double bedroom, and a contemporary bathroom. The property offers comfortable, low-maintenance living in a convenient location, with excellent transport links and local amenities nearby.

Available from the end of June.

Key Features:

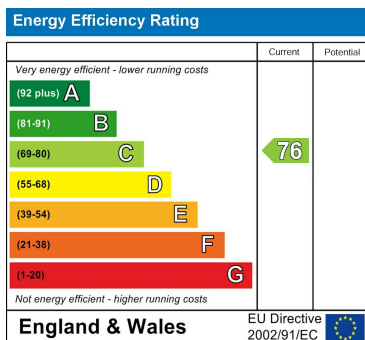
- First-floor modern apartment
- One double bedroom
- Open-plan living room and kitchen



Council Tax Band

C

Energy Performance Graph



Call us on

01923 220 012

[rentals@warrenanthony.co.uk](mailto:rentals@warrenanthony.co.uk)

[www.warrenanthony.co.uk](http://www.warrenanthony.co.uk)

Agents Note: Whilst every care has been taken to prepare these particulars, they are for guidance purposes only. All measurements are approximate and are for general guidance purposes only and whilst every care has been taken to ensure their accuracy, they should not be relied upon and potential buyers are advised to recheck the