



House - Terraced (EPC Rating: )

**ST. MARYS ROAD, WATFORD, WD18  
0EE**

Per Month

**£1,600 Per**

# 2 Bedroom House - Terraced located in Watford

TWO BEDROOM HOUSE LOCATED IN CENTRAL WATFORD JUST 0.5 MILES TO WATFORD GENERAL HOSPITAL AND 0.2 MILES TO WATFORD TOWN CENTRE.

Located in central Watford, this charming two-bedroom house offers a delightful living experience. The property features a spacious reception room that seamlessly opens into the kitchen, creating a warm and inviting atmosphere perfect for both relaxation and entertaining.

With two well-proportioned bedrooms, this home is ideally suited for a couple or a small family seeking comfort and convenience. The bathroom is thoughtfully designed to cater to your daily needs and is located off the landing.

Location is key, and this property does not disappoint. Just a short stroll away, you will find Watford Hospital and the bustling Watford Town Centre, providing a wealth of shopping, dining, and leisure options. For those commuting, Watford Junction is approximately a ten-minute walk, making travel to London and beyond both easy and efficient.

The property also boasts permit parking, gas central heating and double glazing. A small front garden adds a touch of greenery and charm to the exterior, enhancing the overall appeal of this lovely home.

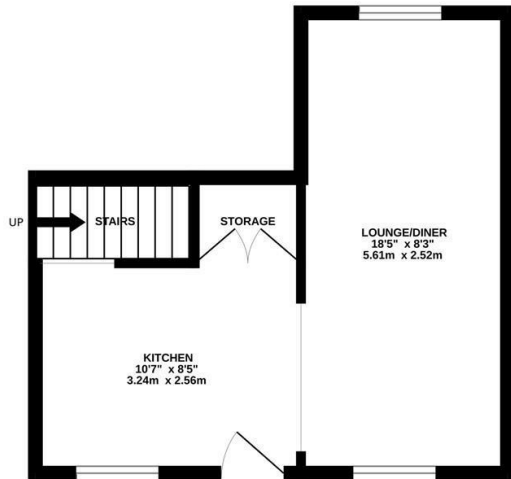
In summary, this two-bedroom house on St. Marys Road is a fantastic opportunity for anyone looking to enjoy a comfortable lifestyle in a prime location. Don't miss the chance to make this delightful property your new home. Offered unfurnished and available now.



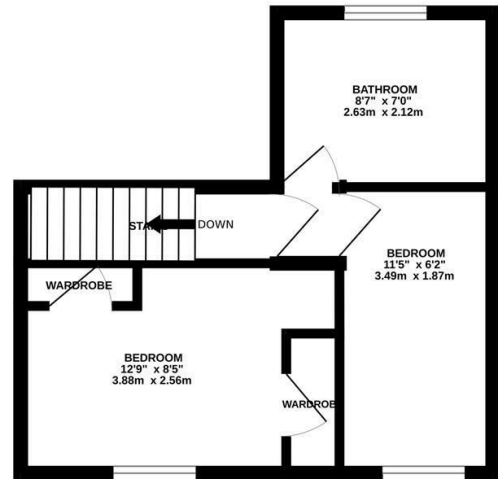


WATFORD LETTINGS | 12 MARKET STREET, WATFORD, HERTFORDSHIRE, WD18 0PD

GROUND FLOOR  
277 sq.ft. (25.8 sq.m.) approx.



1ST FLOOR  
268 sq.ft. (24.9 sq.m.) approx.

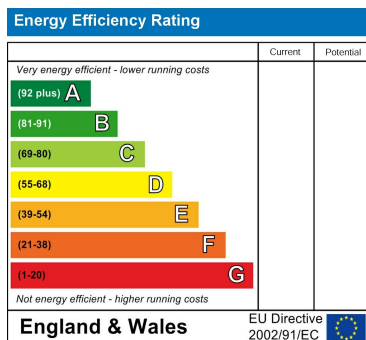


TOTAL FLOOR AREA : 546 sq.ft. (50.7 sq.m.) approx.

Whilst every attempt has been made to ensure the accuracy of the floorplan contained here, measurements of doors, windows, rooms and any other items are approximate and no responsibility is taken for any error, omission or mis-statement. This plan is for illustrative purposes only and should be used as such by any prospective purchaser. The services, systems and appliances shown have not been tested and no guarantee as to their operability or efficiency can be given.  
Made with Metropix ©2025

Council Tax Band

Energy Performance Graph



Call us on

**01923 220 012**

**enquiries@warrenanthony.co.uk**

**www.warrenanthony.co.uk**

Agents Note: Whilst every care has been taken to prepare these particulars, they are for guidance purposes only. All measurements are approximate and are for general guidance purposes only and whilst every care has been taken to ensure their accuracy, they should not be relied upon and potential buyers are advised to recheck the