



Apartment (EPC Rating:)

**WIGGENHALL ROAD, WATFORD,
HERTFORDSHIRE, WD18 0AL**
PCM

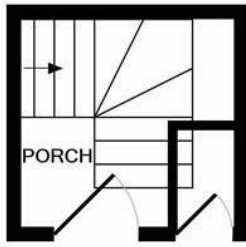
£1,550 PCM

2 Bedroom Apartment located in Hertfordshire

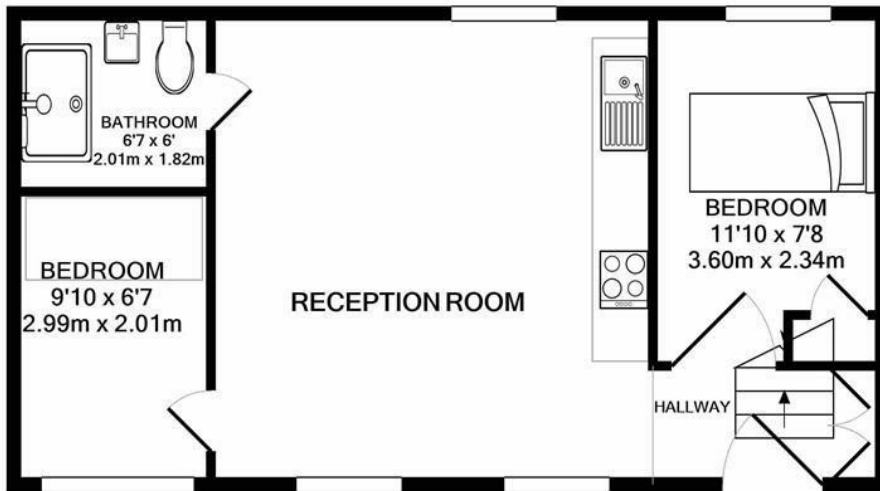
STYLISH AND QUIRKY TWO BEDROOM FIRST FLOOR APARTMENT WITH ITS OWN PRIVATE ENTRANCE - PERMIT PARKING - 0.2 MILES TO WATFORD GIRLS GRAMMAR SCHOOL - 0.5 MILES TO WATFORD GENERAL HOSPITAL - 0.5 MILES TO WATFORD'S TOWN CENTRE.

This property is off set from the main road and has its own entrance hall leading up to the apartment. As you enter, there is an entrance hallway, two double bedrooms (one with fitted wardrobe), a large open plan living room/kitchen area with attractive wooden beamed high ceilings, and a fully tiled, beautiful shower room. This property boasts elegant features. Additionally, there is permit parking, gas central heating, double glazing. Offered furnished or unfurnished and Available February 2025





GROUND FLOOR



1ST FLOOR

Whilst every attempt has been made to ensure the accuracy of the floor plan contained here, measurements of doors, windows, rooms and any other items are approximate and no responsibility is taken for any error, omission, or mis-statement. This plan is for illustrative purposes only and should be used as such by any prospective purchaser. The services, systems and appliances shown have not been tested and no guarantee as to their operability or efficiency can be given
 Made with Metropix ©2021

Council Tax Band

Call us on

01923 220 012

Energy Performance Graph

enquiries@warrenanthony.co.uk

www.warrenanthony.co.uk

Energy Efficiency Rating		
	Current	Potential
<i>Very energy efficient - lower running costs</i>		
(92 plus) A		
(81-91) B		
(69-80) C		
(55-68) D		
(39-54) E		
(21-38) F		
(1-20) G		
<i>Not energy efficient - higher running costs</i>		
England & Wales	EU Directive 2002/91/EC	

Agents Note: Whilst every care has been taken to prepare these particulars, they are for guidance purposes only. All measurements are approximate and are for general guidance purposes only and whilst every care has been taken to ensure their accuracy, they should not be relied upon and potential buyers are advised to recheck the