



Maisonette (EPC Rating: C)

JOEL STREET, NORTHWOOD, HA6 1LL

Per Month

£1,750 Per

# 2 Bedroom Maisonette located in Northwood

SPACIOUS TWO BEDROOM PROPERTY IN NORTHWOOD WITH A PRIVATE GARDEN, PARKING AND JUST 0.1 MILES FROM NORTHWOOD HILLS STATION AND HIGH STREET!

Loacted in the charming area of Northwood, this spacious two-bedroom maisonette on Joel Street offers an ideal blend of comfort and convenience. With a well-proportioned reception room, this property is perfect for both relaxation and entertaining. The two bedrooms provide ample space for rest, while the bathroom is designed for practicality.

One of the standout features of this maisonette is its private garden, a delightful outdoor space where you can enjoy fresh air and sunshine. Additionally, the property comes with parking, a valuable asset in this sought-after location.

Situated just 0.1 miles from Northwood Hills Station, commuting is a breeze, making it an excellent choice for professionals and families alike. The vibrant high street is also within a minute's walk, offering a variety of local shops and amenities to cater to your everyday needs.

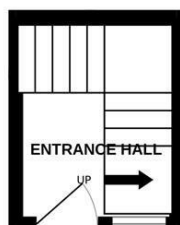
This property will be available for occupancy in July 2025, presenting a wonderful opportunity for those looking to secure a home in a desirable area. This maisonette is sure to impress with its spacious layout and prime location. Don't miss the chance to make this lovely property your new home.



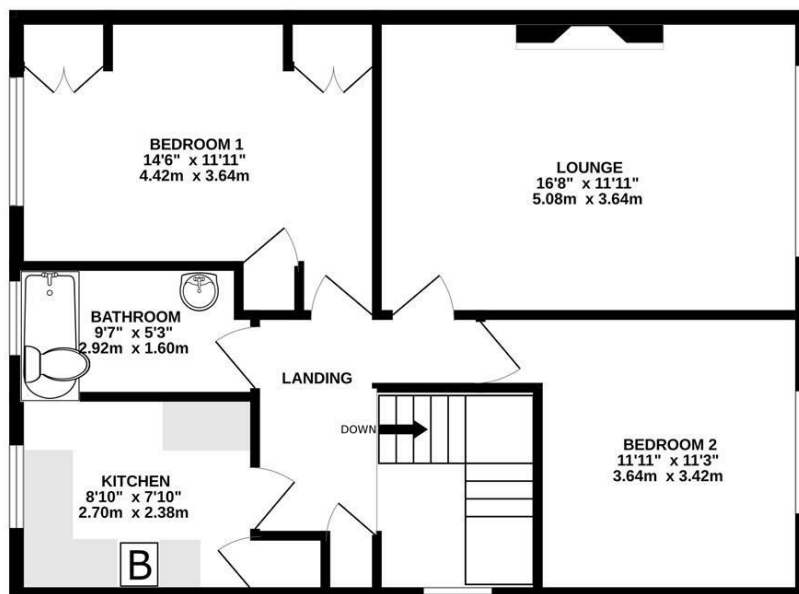


WATFORD LETTINGS | 12 MARKET STREET, WATFORD, HERTFORDSHIRE, WD18 0PD

GROUND FLOOR  
54 sq.ft. (5.0 sq.m.) approx.



1ST FLOOR  
725 sq.ft. (67.4 sq.m.) approx.



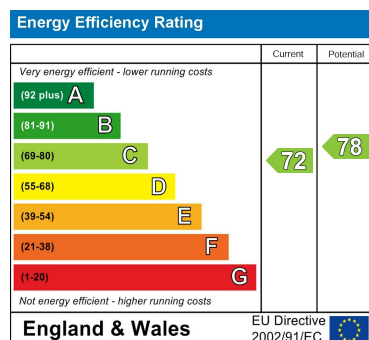
TOTAL FLOOR AREA : 779 sq.ft. (72.4 sq.m.) approx.

Whilst every attempt has been made to ensure the accuracy of the floorplan contained here, measurements of doors, windows, rooms and any other items are approximate and no responsibility is taken for any error, omission or mis-statement. This plan is for illustrative purposes only and should be used as such by any prospective purchaser. The services, systems and appliances shown have not been tested and no guarantee as to their operability or efficiency can be given.  
Made with Metropix ©2024

Council Tax Band

C

Energy Performance Graph



Call us on

01923 220 012

[enquiries@warrenanthony.co.uk](mailto:enquiries@warrenanthony.co.uk)

[www.warrenanthony.co.uk](http://www.warrenanthony.co.uk)

Agents Note: Whilst every care has been taken to prepare these particulars, they are for guidance purposes only. All measurements are approximate and are for general guidance purposes only and whilst every care has been taken to ensure their accuracy, they should not be relied upon and potential buyers are advised to recheck the