



Bungalow - Semi Detached (EPC Rating:)

RADLETT ROAD, WATFORD, WD24 4LL

Per Calendar Month

£1,875 Per



2 Bedroom Bungalow - Semi Detached located in Watford

Two Double Bedroom Ground Floor Bungalow – Excellent Location Near Schools and Transport Links

This well-presented ground floor bungalow is in a highly convenient location. The property features two generously sized double bedrooms, one of which includes fitted wardrobes and additional storage cupboards. A bright and welcoming reception room, while the well-equipped kitchen comes complete with ample storage, a washing machine, fridge, gas hob, electric oven, and extractor fan.

The family bathroom is fitted with a mains shower over the bath. Towards the rear of the property, a study room leads out to a private garden. This outdoor space includes a patio area and a well-maintained lawn, along with a outbuilding.

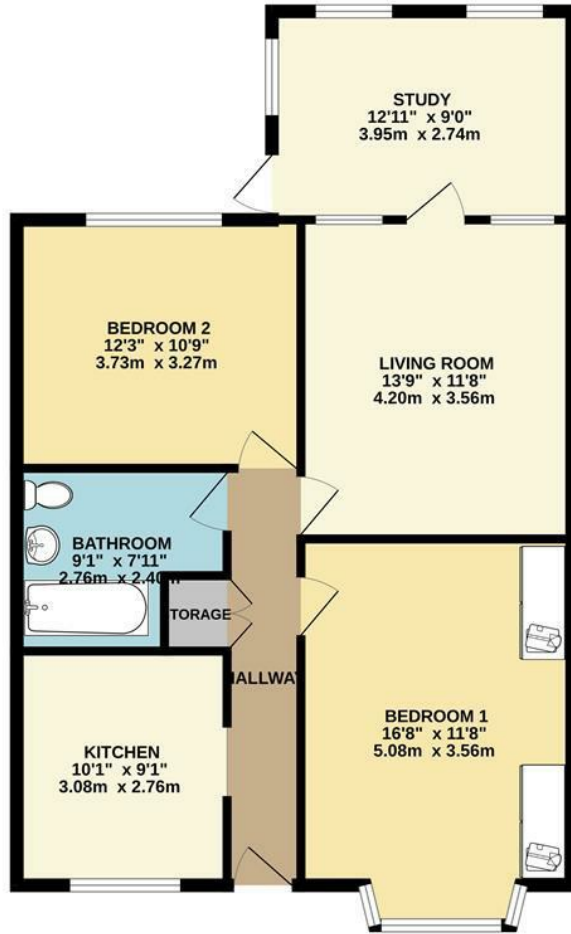
Additional benefits include gas central heating, double glazing throughout, and off-road parking for two vehicles. Situated close to a range of schools and benefitting from excellent public transport and road links.

The property will be available from the beginning of July 2025.



WATFORD LETTINGS | 12 MARKET STREET, WATFORD, HERTFORDSHIRE, WD18 0PD

GROUND FLOOR
815 sq.ft. (75.7 sq.m.) approx.



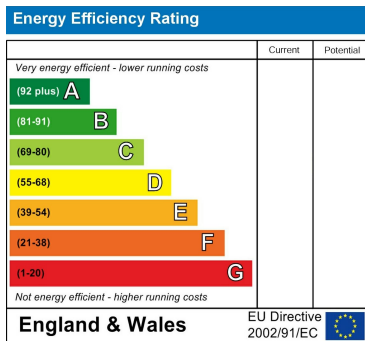
2 BED 2 BATH

TOTAL FLOOR AREA: 815 sq.ft. (75.7 sq.m.) approx.

Whilst every attempt has been made to ensure the accuracy of the floorplan contained here, measurements of doors, windows, rooms and any other items are approximate and no responsibility is taken for any error, omission or mis-statement. This plan is for illustrative purposes only and should be used as such by any prospective purchaser. The services, systems and appliances shown have not been tested and no guarantee as to their operability or efficiency can be given.
Made with Metropix ©2023

Council Tax Band

Energy Performance Graph



Call us on

01923 220 012

enquiries@warrenanthony.co.uk

www.warrenanthony.co.uk

Agents Note: Whilst every care has been taken to prepare these particulars, they are for guidance purposes only. All measurements are approximate and are for general guidance purposes only and whilst every care has been taken to ensure their accuracy, they should not be relied upon and potential buyers are advised to recheck the

