



Apartment (EPC Rating: C)

**BENSKIN ROAD, WATFORD, WD18
0HW**

Per Month

£1,400 Per

3 Bedroom Apartment located in Watford

FIRST FLOOR TWO/THREE BEDROOM APARTMENT LOCATED IN WATFORD VERY CLOSE TO WATFORD GENERAL HOSPITAL - GAS AND WATER BILLS INCLUDED - AVAILABLE NOW.

A well-presented first-floor apartment located within a block of apartments on Benskin Road, WD18, ideally positioned in a prime rental location close to a range of local amenities.

The property offers a bright open-plan living room and kitchen, featuring a small island with seating and new kitchen appliances, creating a practical and sociable living space.

Accommodation comprises two double bedrooms (with optional furniture available) and a small single room which can be used as a third bedroom, study, or home office, making the layout flexible for different living arrangements.

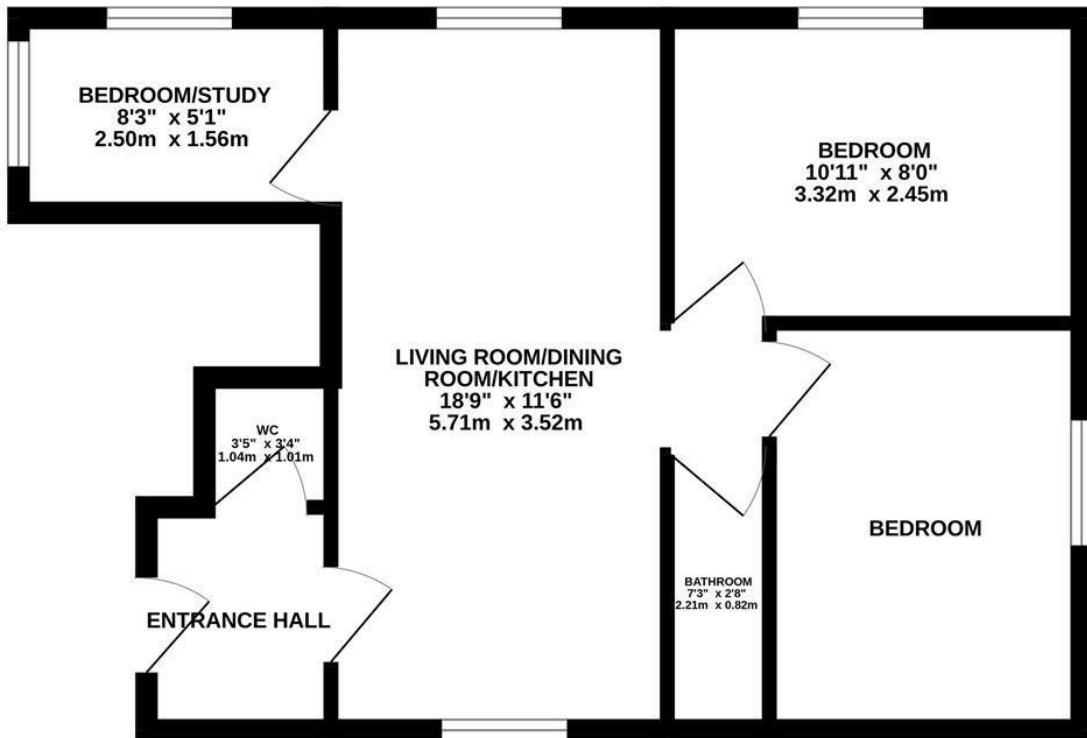
The property further benefits from one shower room and a separate toilet, adding convenience for shared living.

Ideally located close to Watford General Hospital, Watford Town Centre, Watford Metropolitan Station and Watford High Street Station, as well as local schools and parks,



WATFORD LETTINGS | 12 MARKET STREET, WATFORD, HERTFORDSHIRE, WD18 0PD

GROUND FLOOR
452 sq.ft. (41.9 sq.m.) approx.

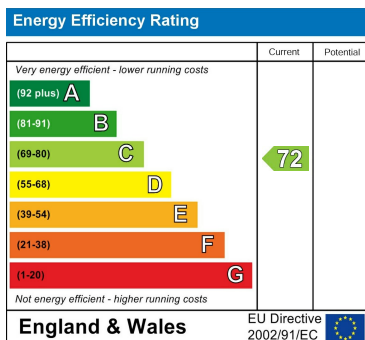


TOTAL FLOOR AREA: 452 sq.ft. (41.9 sq.m.) approx.
 Whilst every attempt has been made to ensure the accuracy of the floorplan contained here, measurements of doors, windows, rooms and any other items are approximate and no responsibility is taken for any error, omission or mis-statement. This plan is for illustrative purposes only and should be used as such by any prospective purchaser. The services, systems and appliances shown have not been tested and no guarantee as to their operability or efficiency can be given.
 Made with Metropix ©2025

Council Tax Band

C

Energy Performance Graph



Call us on

01923 220 012

enquiries@warrenanthony.co.uk

www.warrenanthony.co.uk

Agents Note: Whilst every care has been taken to prepare these particulars, they are for guidance purposes only. All measurements are approximate and are for general guidance purposes only and whilst every care has been taken to ensure their accuracy, they should not be relied upon and potential buyers are advised to recheck the

