

FREEHOLD



House - Terraced (EPC Rating:)

WOODFORD ROAD, WATFORD, WD17
1PB

£539,950

2 Bedroom House - Terraced located in Watford

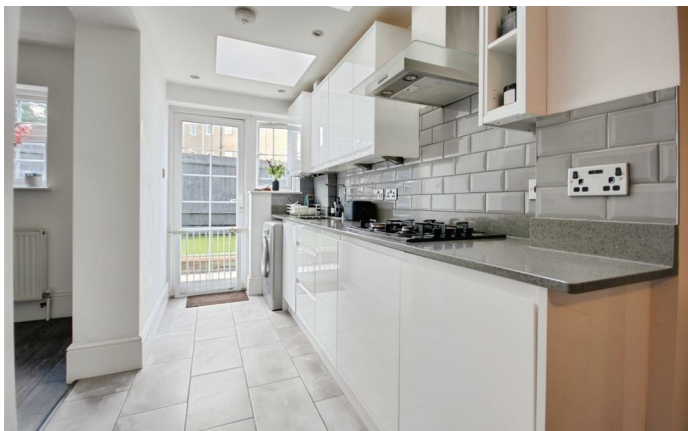
A stunning two bedroom semi detached house located a short distance from Watford Junction Station and The Harlequin shopping centre. An internal viewing is highly recommended.

FULL DESCRIPTION

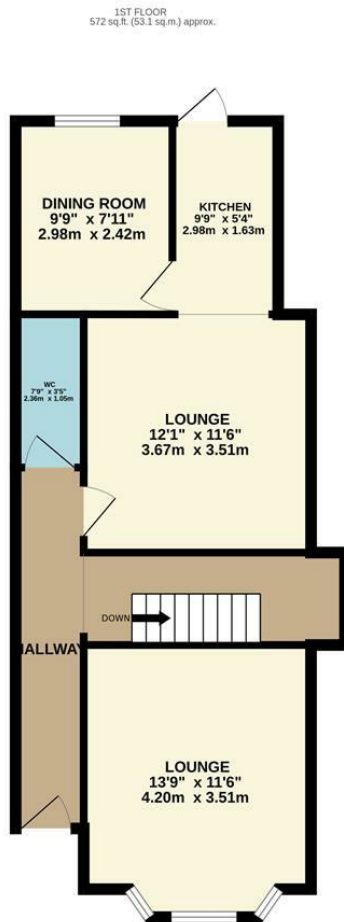
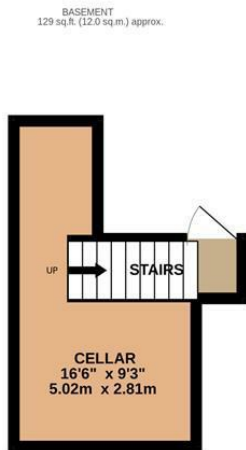
This beautifully presented two-bedroom period home is offered in excellent decorative condition, perfectly combining character features with modern living. The property boasts a stylish contemporary kitchen and a modern fitted bathroom, ensuring comfort and convenience throughout with excellent sized accommodation throughout and the added feature of a basement..

With three versatile reception rooms, there is ample space for both relaxation and entertaining. High ceilings and period charm are complemented by tasteful décor, creating a warm and inviting atmosphere.

Ideally located close to Watford Junction Station, this home provides excellent transport links into London and beyond, making it perfect for commuters. A rare opportunity to acquire a property that blends period elegance with modern comforts in such a sought-after location.



WATFORD SALES | 12 MARKET STREET, WATFORD, HERTFORDSHIRE, WD18 0PD

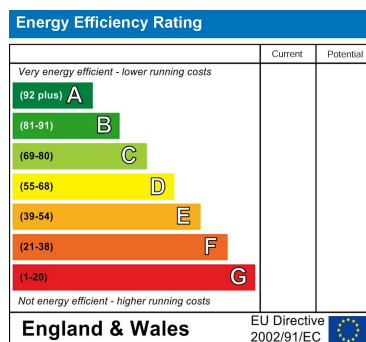


TOTAL FLOOR AREA : 1214 sq.ft. (112.8 sq.m.) approx.

Whilst every attempt has been made to ensure the accuracy of the floorplan contained here, measurements of doors, windows, rooms and any other items are approximate and no responsibility is taken for any error, omission or mis-statement. This plan is for illustrative purposes only and should be used as such by any prospective purchaser. The services, systems and appliances shown have not been tested and no guarantee as to their operability or efficiency can be given.
Made with Metropix ©2025

Council Tax Band

Energy Performance Graph



Call us on

01923 220012

sales@warrenanthony.co.uk

<https://www.warrenanthony.co.uk>

Agents Note: Whilst every care has been taken to prepare these particulars, they are for guidance purposes only. All measurements are approximate and are for general guidance purposes only and whilst every care has been taken to ensure their accuracy, they should not be relied upon and potential buyers are advised to recheck the