

FREEHOLD



House - Terraced (EPC Rating: D)

PRINCES AVE, WATFORD, WD18 7SQ

£422,500

3 Bedroom House - Terraced located in Watford

A three bedroom mid-terraced family home with newly fitted bathroom and carpets throughout. The property is offered for sale with no upper chain.

Full Description

Offered for sale with no upper chain this three bedroom mid terraced family home is located in a popular residential road in West Watford.

The property has two good sized reception rooms and a larger than average kitchen to the ground floor. to the first floor there are three bedrooms and newly fitted bathroom.

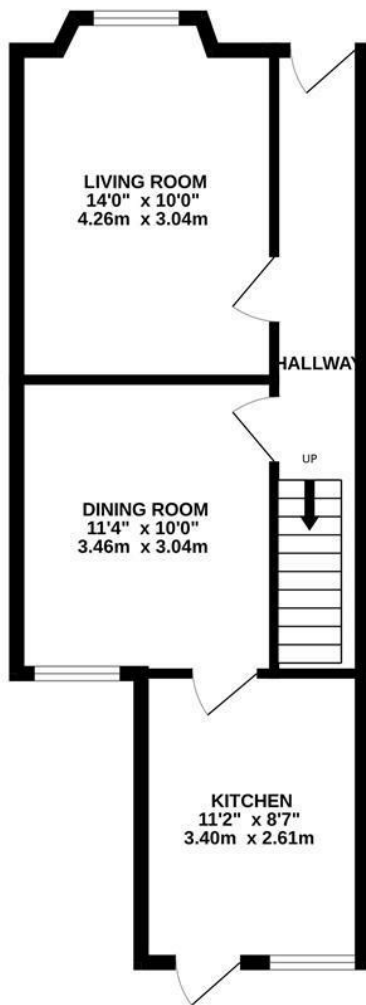
Outside there is a large rear garden with brick built shed.

Freehold.

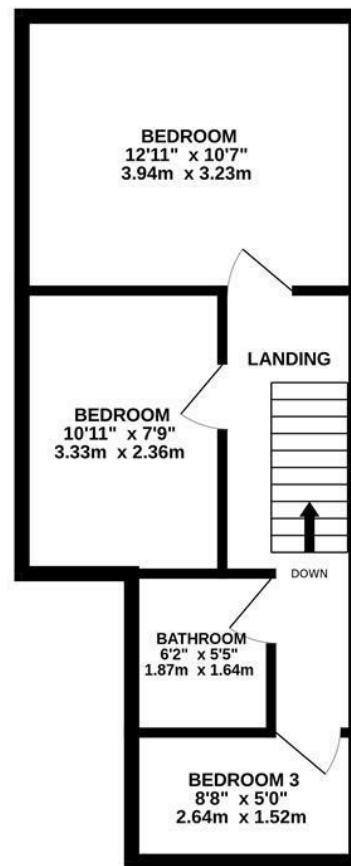


WATFORD SALES | 12 MARKET STREET, WATFORD, HERTFORDSHIRE, WD18 0PD

GROUND FLOOR
425 sq.ft. (39.4 sq.m.) approx.



1ST FLOOR
375 sq.ft. (34.8 sq.m.) approx.



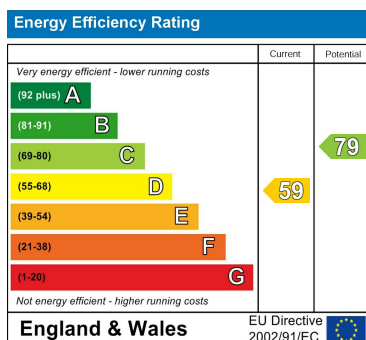
TOTAL FLOOR AREA: 799 sq.ft. (74.3 sq.m.) approx.

Whilst every attempt has been made to ensure the accuracy of the floorplan contained here, measurements of doors, windows, rooms and any other items are approximate and no responsibility is taken for any error, omission or mis-statement. This plan is for illustrative purposes only and should be used as such by any prospective purchaser. The services, systems and appliances shown have not been tested and no guarantee as to their operability or efficiency can be given.
Made with Metropix ©2025

Council Tax Band

D

Energy Performance Graph



Call us on

01923 220012

sales@warrenanthony.co.uk

<https://www.warrenanthony.co.uk>

Agents Note: Whilst every care has been taken to prepare these particulars, they are for guidance purposes only. All measurements are approximate and are for general guidance purposes only and whilst every care has been taken to ensure their accuracy, they should not be relied upon and potential buyers are advised to recheck the