



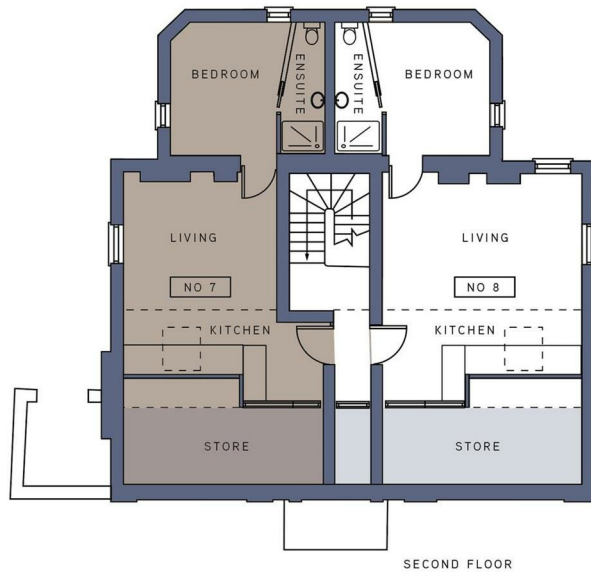
Flat 7 88 Portland Street, Cheltenham, GL52 2PE

£895 Per month

**TO LET**



- One Double Bedroom
- Open Plan Living
- Modern Shower Room
- Electric Heating
- Council Tax Band - A
- Unfurnished
- Integrated Appliances
- Town Centre Location
- Residents Permit Parking
- EPC Rating - D



## THE PROPERTY

An extremely well-presented one double bedroom top floor apartment situated in Pittville in this magnificent fully refurbished Georgian villa. The property is within a few minutes walk of the High Street in one direction and Pittville Park in the other.

Internally the property has been fully refurbished to a high standard retaining period features with the addition of good quality modern fixtures and fittings. The property briefly comprises of an open plan sitting / dining room with oak flooring contemporary fitted kitchen with quartz surfaces, induction hob, self cleaning oven and fridge, one double bedroom and en suite shower room. The property is warmed by electric heating.

Externally the property benefits from a bicycle store and residents permit parking is available at a charge.

Owing to the size of the property it is suitable for a single occupant. Super fast Star Link Broadband is available at this property and can be added for £35 per month.

## SITUATION

## Directions