



4 St. Lukes Place, Cheltenham, GL53 7HS

£1,595 Per month

TO LET



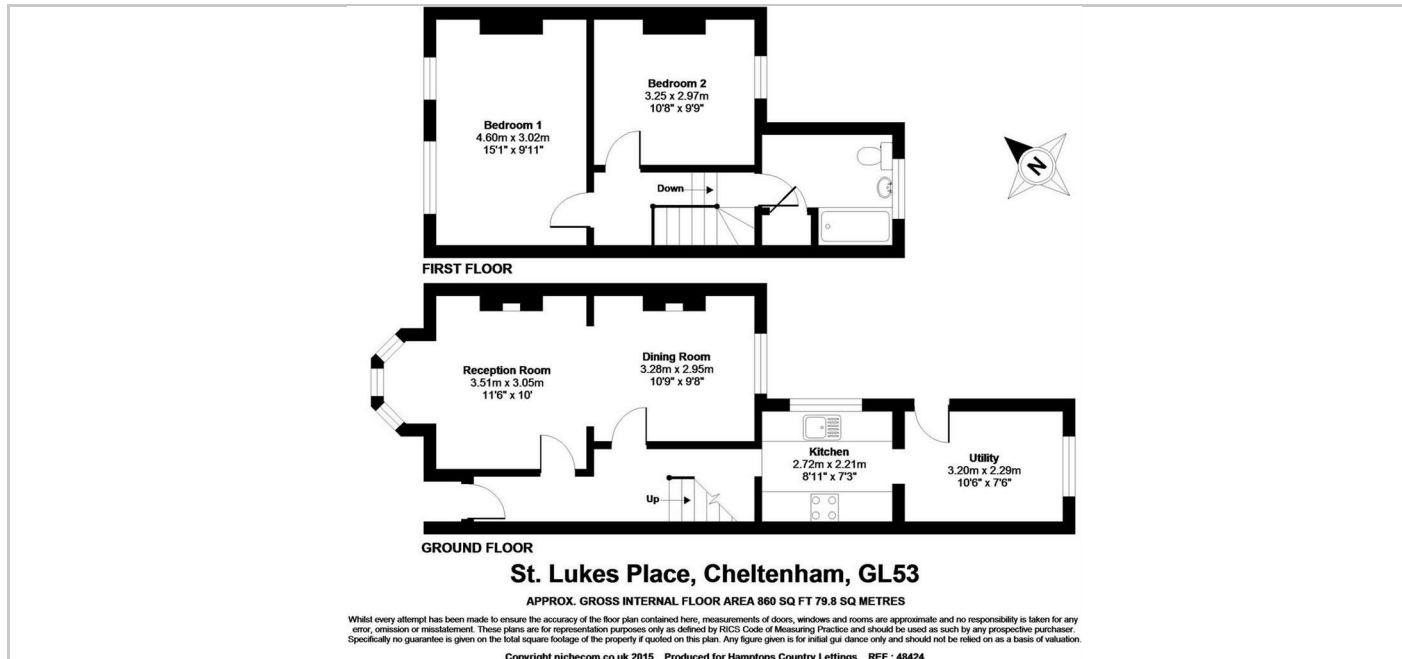
- Two Double Bedrooms
- Two Reception Rooms
- Driveway Parking
- Recently Redecorated
- Council Tax Band - C
- Unfurnished
- Patio Garden
- Central Location
- Fitted Kitchen with Appliances
- EPC Rating - E

THE PROPERTY

A pretty terraced house located in a quiet spot, near to Sandford Park and within a few minutes walk of the High Street.

Internally the property has been recently redecorated throughout and briefly comprises of a through sitting / dining room, galley kitchen with electric hob, electric oven, washing machine, dishwasher and fridge freezer, breakfast room / study with door to the garden, two double bedrooms and a modern bathroom with shower over the bath. The property is warmed throughout by gas central heating.

Externally the property has off road parking to the front for one vehicle and a paved garden to the rear.



SITUATION

Directions