



Flat 6, The Pond House 19 Pittville Crescent, Cheltenham, GL52 2QZ

£1,750 Per month

TO LET



- Two Double Bedrooms
- Fully Furnished
- Gated Parking
- Gas Central Heating
- Council Tax Band - E
- Two Bathrooms
- High Specification
- Central Location
- Communal Gardens
- EPC Rating - C

THE PROPERTY

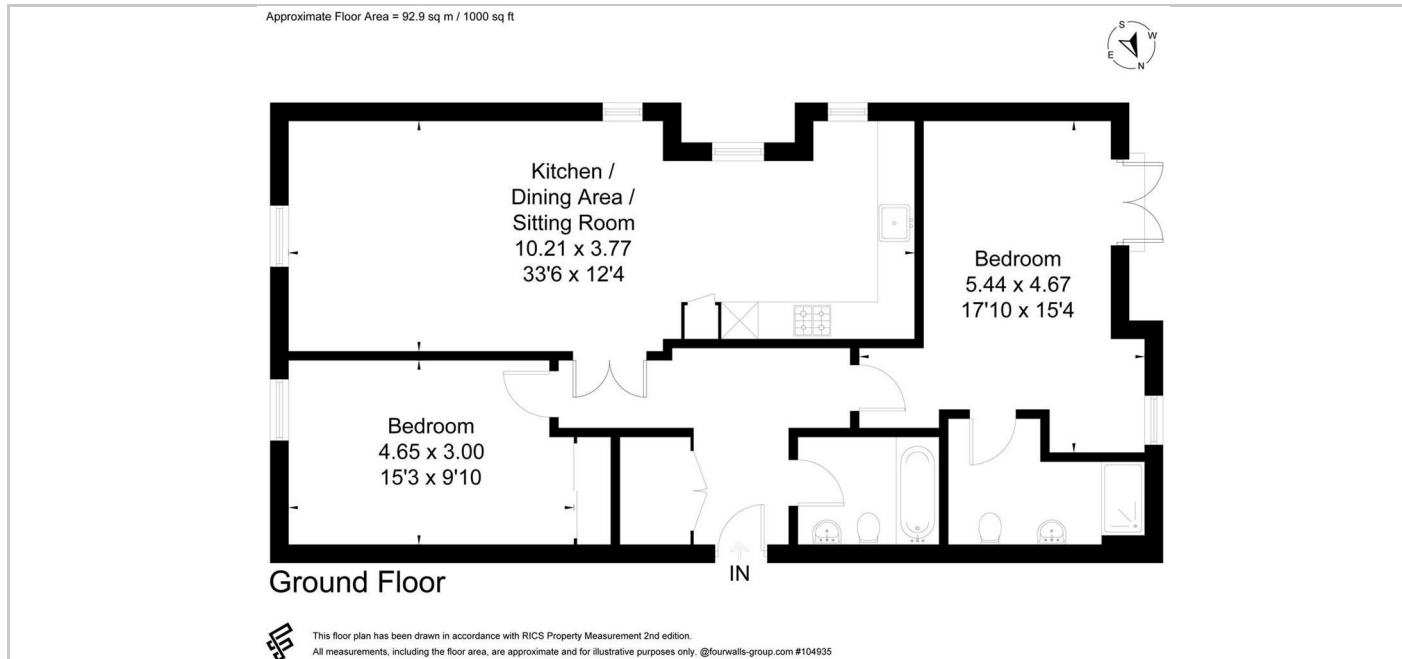
A stunning, two double bedroom, fully furnished apartment located in an exclusive development on the corner of Pittville Crescent, adjacent to Pittville Park and within walking distance of the Town Centre.

The property benefits externally from gated off road parking with additional residents permit parking available subject to subscription and charges with communal gardens.

Internally the property has been finished to an exceptional standard and briefly comprises of a contemporary fitted kitchen with integrated appliances opening into a sitting room/dining room, two double bedrooms with built in storage, en suite shower room and further bathroom with shower over the bath.

The property is warmed throughout by gas central heating and an energy saving heat recovery system.

SITUATION



Directions