

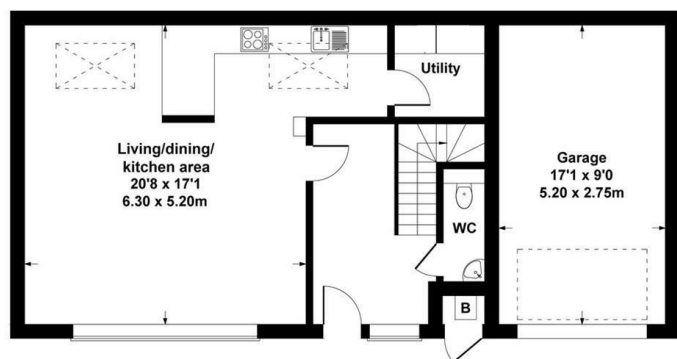
2 Northwick Close, Cheltenham, GL50 2RJ

£1,850 Per month

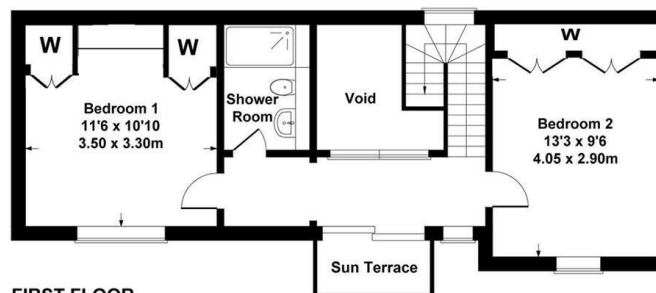
TO LET



- Two Double Bedrooms
- Quiet Location
- Integrated Neff Appliances
- Balcony
- Council Tax - Band D
- Unfurnished
- Contemporary Fixtures & Fittings
- Close to Bath Road & Tivoli
- Garage with EV Charging
- EPC Rating - B



GROUND FLOOR



FIRST FLOOR

SKETCH PLAN FOR ILLUSTRATIVE PURPOSES ONLY

All measurements walls, doors, windows, fittings and appliances, their sizes and locations, are approximate only. They cannot be regarded as being a representation by the seller, nor their agent.

Produced by Potterplans Ltd. 2023

THE PROPERTY

A stylish and contemporary two double bedroom, unfurnished mews house located in a quiet position in between Tivoli and the ever popular Bath Road.

This almost new property is presented in excellent order throughout and briefly comprises of an entrance hallway with cloakroom, open plan living and dining room leading into the kitchen complete with integrated hob, oven, dishwasher and fridge freezer, utility room with plumbing for a washing machine and space for a tumble dryer, bright landing with doors to a balcony, two good double bedrooms each with a range of built-in storage and a contemporary shower room. The property is warmed throughout by gas central heating.

Externally the property has a garage with electric vehicle charging point and further parking is available on street.

SITUATION

Directions