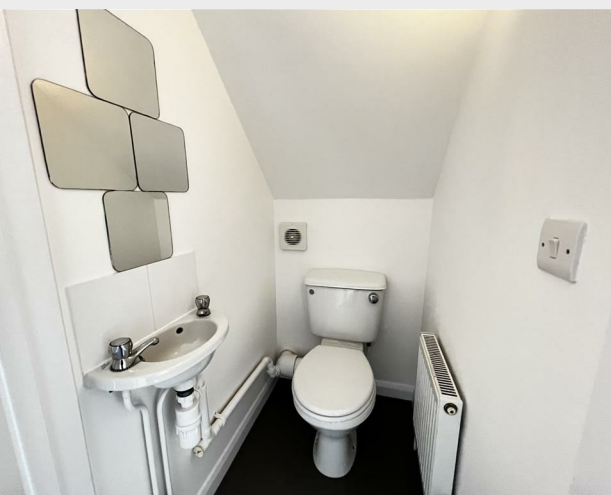


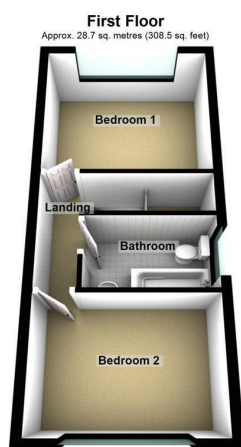
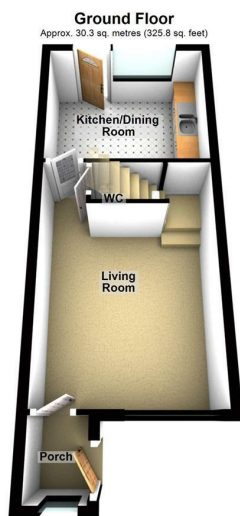
96 Barn Rise, Seaford, BN25 3DD
£1,400 PCM



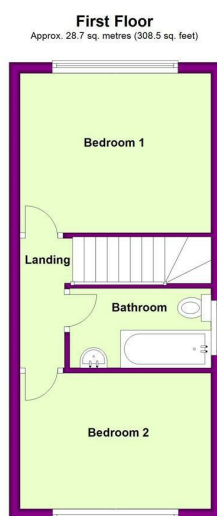
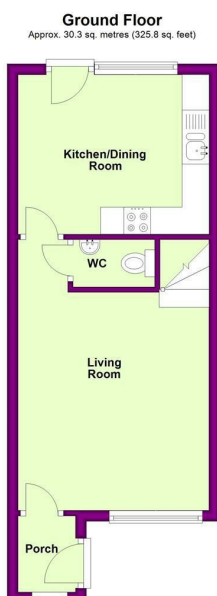
A modern 2 bedroom house in a popular area, close to buses to Brighton, Eastbourne and the town centre. Brand new carpets and re-decorated throughout. Modern fitted kitchen, white bathroom suite and UPVC double glazing, gas central heating, rear garden, off road parking to the front.



87 Katherine Way
 Seaford
 East Sussex
 BN25 2XF
 01323 379500
 hello@lukeharris.co.uk
 www.lukeharris.co.uk



Total area: approx. 58.9 sq. metres (634.3 sq. feet)



Total area: approx. 58.9 sq. metres (634.3 sq. feet)

Energy Efficiency Rating		Environmental Impact (CO ₂) Rating			
	Current	Potential		Current	Potential
Very energy efficient - lower running costs			Very environmentally friendly - lower CO ₂ emissions		
(92 plus) A			(92 plus) A		
(81-91) B			(81-91) B		
(69-80) C			(69-80) C		
(55-68) D			(55-68) D		
(39-54) E			(39-54) E		
(21-38) F			(21-38) F		
(1-20) G			(1-20) G		
Not energy efficient - higher running costs			Not environmentally friendly - higher CO ₂ emissions		
		76			
		90			
England & Wales	EU Directive 2002/91/EC		England & Wales	EU Directive 2002/91/EC	