

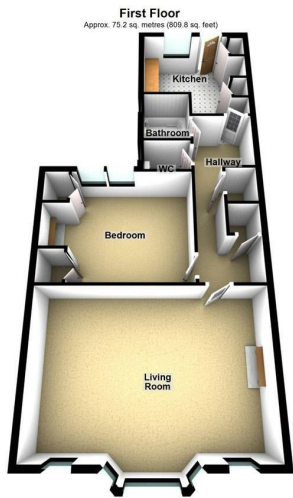
13a Clinton Place, Seaford, BN25 1NL  
£950 PCM



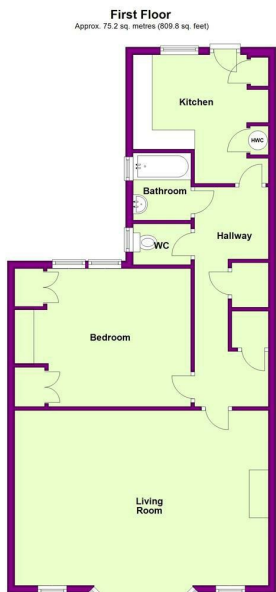
A beautifully presented first floor flat conveniently situated in the centre of town. This bright and spacious flat has a sizeable living room with large bay window. The double bedroom has two built in wardrobes. New grey fitted carpets, neutral décor, long let available.



87 Katherine Way  
Seaford  
East Sussex  
BN25 2XF  
01323 379500  
hello@lukeharris.co.uk  
www.lukeharris.co.uk



Total area: approx. 75.2 sq. metres (809.8 sq. feet)



Total area: approx. 75.2 sq. metres (809.8 sq. feet)

Energy Efficiency Rating			Environmental Impact (CO <sub>2</sub> ) Rating		
	Current	Potential		Current	Potential
Very energy efficient - lower running costs			Very environmentally friendly - lower CO <sub>2</sub> emissions		
(82 plus) <b>A</b>			(82 plus) <b>A</b>		
(61-81) <b>B</b>			(61-81) <b>B</b>		
(49-60) <b>C</b>			(49-60) <b>C</b>		
(39-48) <b>D</b>			(39-48) <b>D</b>		
(29-38) <b>E</b>			(29-38) <b>E</b>		
(21-28) <b>F</b>			(21-28) <b>F</b>		
(1-20) <b>G</b>			(1-20) <b>G</b>		
Not energy efficient - higher running costs			Not environmentally friendly - higher CO <sub>2</sub> emissions		
England & Wales			England & Wales		
EU Directive 2002/91/EC			EU Directive 2002/91/EC		