

20 Great Cliffe Road, Eastbourne, BN23 7AY
£1,450 Per Month

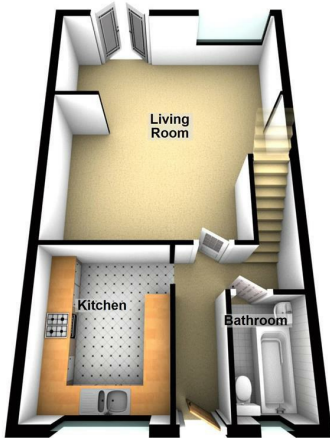




87 Katherine Way
 Seaford
 East Sussex
 BN25 2XF
 01323 379500
 hello@lukeharris.co.uk
 www.lukeharris.co.uk

Ground Floor

Approx. 45.8 sq. metres (493.3 sq. feet)



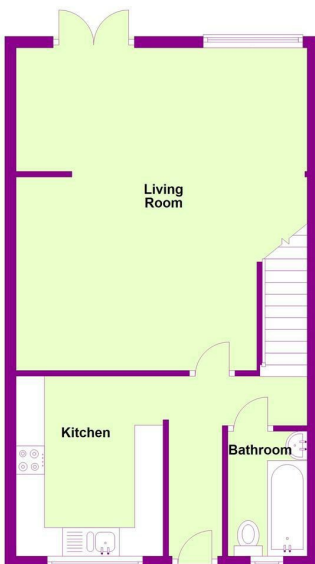
First Floor

Approx. 32.5 sq. metres (349.8 sq. feet)



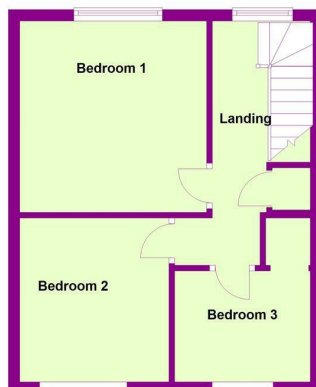
Ground Floor

Approx. 45.8 sq. metres (493.3 sq. feet)



First Floor

Approx. 32.5 sq. metres (349.8 sq. feet)



Energy Efficiency Rating		Environmental Impact (CO ₂) Rating	
Current	Potential	Current	Potential
Very energy efficient - lower running costs	Very energy efficient - lower running costs	Very environmentally friendly - lower CO ₂ emissions	Very environmentally friendly - lower CO ₂ emissions
(82 plus) A	(82 plus) A	(81-91) A	(81-91) A
(61-81) B	(61-81) B	(61-80) B	(61-80) B
(49-60) C	(49-60) C	(49-60) C	(49-60) C
(39-48) D	(39-48) D	(39-54) D	(39-54) D
(29-38) E	(29-38) E	(29-54) E	(29-54) E
(21-28) F	(21-28) F	(21-38) F	(21-38) F
(1-20) G	(1-20) G	(1-20) G	(1-20) G
Not energy efficient - higher running costs	Not energy efficient - higher running costs	Not environmentally friendly - higher CO ₂ emissions	Not environmentally friendly - higher CO ₂ emissions
84	67		
England & Wales	EU Directive 2002/91/EC	England & Wales	EU Directive 2002/91/EC