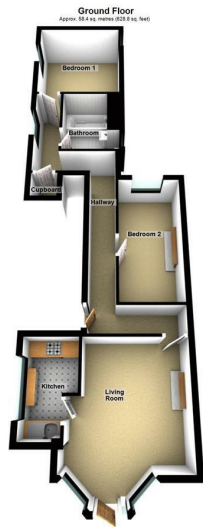


Flat 1, 24 Claremont Road, Seaford, East Sussex, BN25 2BA  
£1,225 Per Month

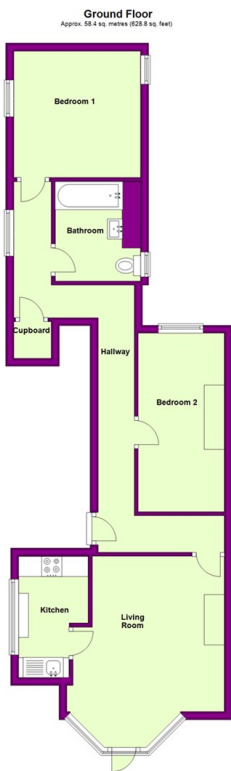




87 Katherine Way  
Seaford  
East Sussex  
BN25 2XF  
01323 379500  
hello@lukeharris.co.uk  
www.lukeharris.co.uk



Total area: approx. 58.4 sq. metres (628.8 sq. feet)



Total area: approx. 58.4 sq. metres (628.8 sq. feet)

Energy Efficiency Rating			Environmental Impact (CO <sub>2</sub> ) Rating		
	Current	Potential		Current	Potential
Very energy efficient - lower running costs					
(82 plus) <b>A</b>			(102 plus) <b>A</b>		
(61-81) <b>B</b>			(81-101) <b>B</b>		
(49-60) <b>C</b>			(60-80) <b>C</b>		
(39-48) <b>D</b>			(50-59) <b>D</b>		
(29-38) <b>E</b>			(39-49) <b>E</b>		
(21-28) <b>F</b>			(31-38) <b>F</b>		
(1-20) <b>G</b>			(1-30) <b>G</b>		
Not energy efficient - higher running costs					
England & Wales			England & Wales		
EU Directive 2002/91/EC			EU Directive 2002/91/EC		