



11a Scarsdale Place

Buxton, SK17 6EF

£135,000



11a Scarsdale Place

Buxton, SK17 6EF

Tenure Leasehold Council Tax Band A



This spacious first floor, two bedroom flat has been completely renovated throughout by our clients to an extremely high standard. With brand new kitchen and bathroom facilities and new uPVC sealed unit double glazing and brand new combi gas fired central heating boiler. Centrally situated on Buxton's Market Place within easy reach of its many amenities, this beautifully appointed apartment would be an ideal first time buy or investment purchase and should be viewed internally to be fully appreciated.

DIRECTIONS

From our Buxton office bear left and proceed up Terrace Road to the Market Place. Turn first left onto Market Street and immediate right onto Scarsdale Place. The property can be seen on the left hand side.

GROUND FLOOR

Communal entrance hall (two flats)

Entrance Hall

10'3" x 6'4" (3.12m x 1.93m)

Inner Hallway

15'5" x 5'10" (4.70m x 1.78m)

With single radiator.

Dining/Kitchen

12'3" x 8'6" (3.73m x 2.59m)

Fitted with a brand new range of base and eye level units and working surfaces incorporating a stainless steel single drainer sink unit with splash backs. With integrated stainless steel oven with four ring ceramic hob and stainless steel extractor over. With single radiator, space and plumbing for a washing

machine, space for a fridge/freezer and uPVC sealed unit double glazed window to rear.

Lounge

15'4" x 14'5" (4.67m x 4.39m)

With two double radiators and uPVC sealed unit double glazed bay window to front.

Bedroom One

14'10" x 14'3" (4.52m x 4.34m)

With double radiator and uPVC sealed unit double glazed bay window to front.

Bedroom Two

10'3" x 9'2" (3.12m x 2.79m)

With single radiator and uPVC sealed unit double glazed window to rear.

Bathroom

9'5" x 5'9" (2.87m x 1.75m)

Fitted with a brand new suite comprising of a panelled bath with mixer shower over and shower screen, vanity washbasin and low level W.C. With stainless steel heated towel rail, extractor fan and frosted uPVC sealed unit double glazed window to rear.



Road Map



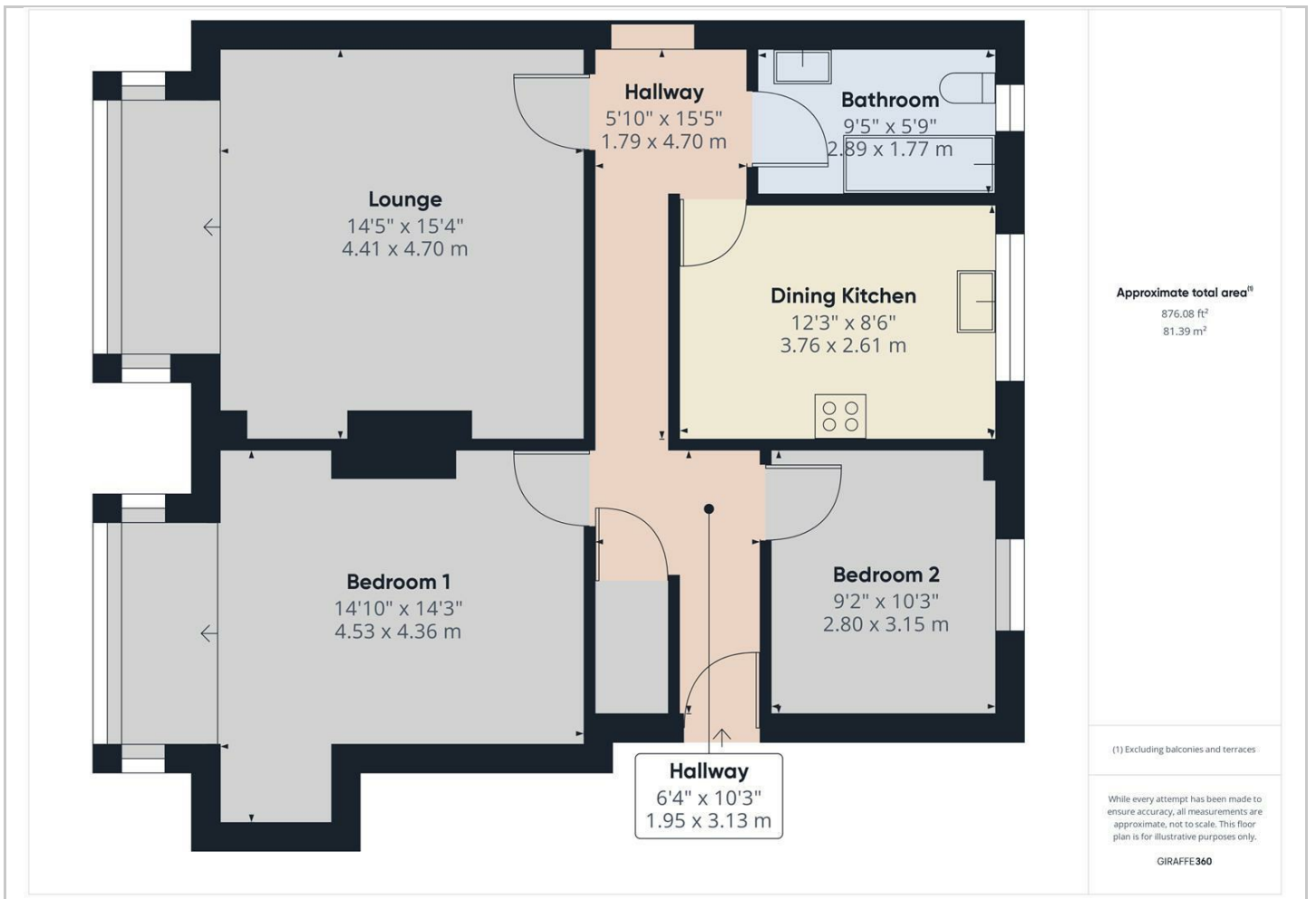
Hybrid Map



Terrain Map



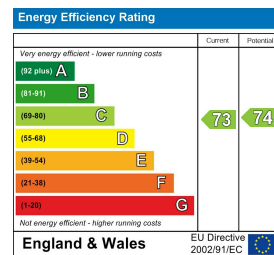
Floor Plan



Viewing

Please contact our Mellors Estate Agents Office on 01298 24383 if you wish to arrange a viewing appointment for this property or require further information.

Energy Efficiency Graph



Important Notice

Mellors Estate Agents, their solicitors and joint agents give notice that:

- They are not authorised to make or give any representations or warranties in relation to the property either here or elsewhere, either on their own behalf or on behalf of their client or otherwise. They assume no responsibility for any statement that may be made in these particulars. These particulars do not form part of any offer or contract and must not be relied upon as statements or representation of fact.
- Any areas, measurements or distances are approximate. The text, photographs and plans are for guidance only and are not necessarily comprehensive. It should not be assumed that the property has all necessary planning building regulation or other consents and Mellors Estate Agents have not tested any services, equipment or facilities. Purchasers must satisfy themselves by inspection or otherwise.

1 Grove Parade, Buxton, Derbyshire, SK17 6AJ
 Tel: 01298 24383 Email: info@mellors.org.uk www.mellors.org.uk