



Flat 2, 155 Park Road

Buxton, SK17 6SW

£160,000



Flat 2, 155 Park Road

Buxton, SK17 6SW

Tenure Leasehold Council Tax Band A



A spacious and well presented one bedroom apartment, superbly located on Park Road, just a short distance from the town centre, The Pavilion Gardens and The Opera House. Benefitting from uPVC sealed unit double glazing and combi gas fired central heating throughout and with a number of period features. Externally, there is an off road parking space and a car port. An internal viewing is highly recommended.

DIRECTONS:

From our Buxton office turn right and bear left at the roundabout. Follow the road around to the right into Manchester Road and turn left into Park Road. At the T-junction, turn right and follow Park Road for a short distance where 155 can be found on the right hand side, clearly identified by our For Sale board. Please note that the access to Flat 2 is at the rear of the building.

GROUND FLOOR

Kitchen

10'2" x 8'6" (3.10m x 2.59m)

Fitted with a range of wooden base and eye level units and working surfaces incorporating a 1 1/2 bowl stainless steel single drainer sink unit with tiled splashbacks. With integrated oven, stainless steel four ring gas hob and stainless steel extractor. Space and plumbing for a washing machine, space for larder fridge and space for larder freezer. Single radiator and two uPVC sealed unit double glazed windows to side. Door to lounge.

Lounge

15'5" x 13'6" (4.70m x 4.11m)

With built in floor to ceiling cupboards housing an

Alpha combination central heating and hot water boiler. Wall mounted shelving, double radiator, uPVC sealed unit double glazed window to rear, telephone point and door to inner hall.

Hallway

9'8" x 4'4" (2.95m x 1.32m)

With built in double wardrobe and stripped wooden flooring.

Bedroom One

14'10" x 14'8" (4.52m x 4.47m)

With stripped wooden flooring and half wood panelled walls. Featuring a decorative granite fireplace surround and mantle incorporating a cast iron fireplace with tiled inset and hearth. Two wall light points, double radiator and two uPVC sealed unit double glazed windows.

Bathroom

9'1" x 6' (2.77m x 1.83m)

Part tiled and fitted with a good quality suite comprising a panel bath with mixer shower, low level wc, pedestal wash basin. Tiled and glazed cubicle with shower, Victorian style radiator and frosted uPVC sealed unit double glazed window.

OUTSIDE

Car Port and Parking

The flat has the benefit of a car port and further off road parking space.



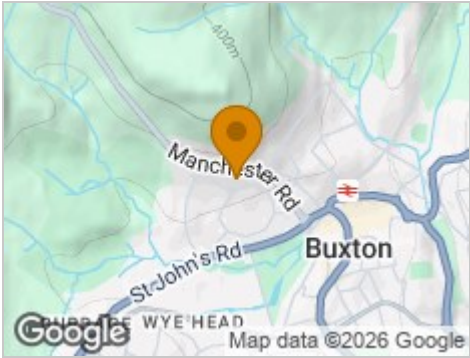
Road Map



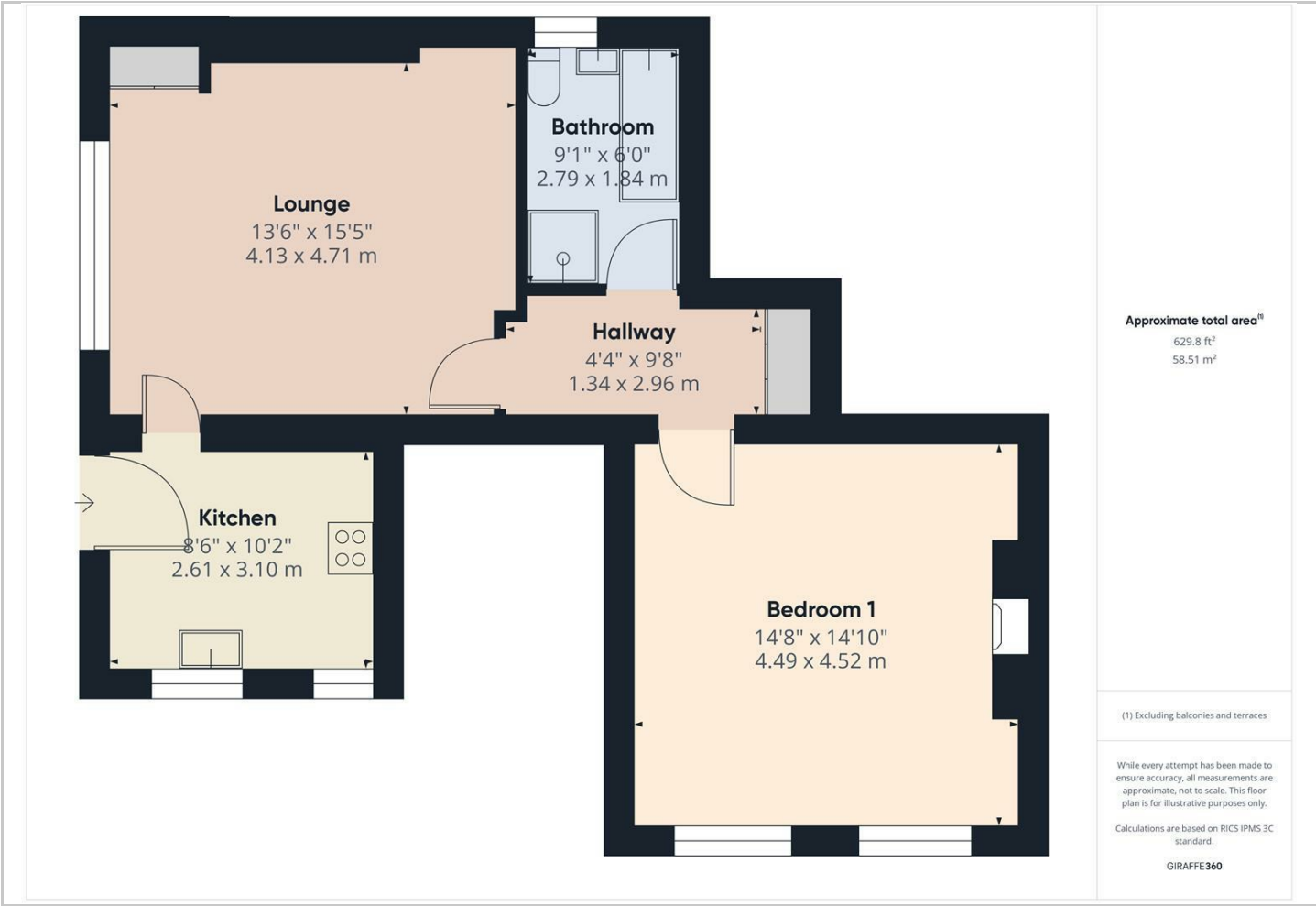
Hybrid Map



Terrain Map



Floor Plan



Viewing

Please contact our Mellors Estate Agents Office on 01298 24383 if you wish to arrange a viewing appointment for this property or require further information.

Important Notice
Mellors Estate Agents, their solicitors and joint agents give notice that:
1. They are not authorised to make or give any representations or warranties in relation to the property either here or elsewhere, either on their own behalf or on behalf of their client or otherwise. They assume no responsibility for any statement that may be made in these particulars. These particulars do not form part of any offer or contract and must not be relied upon as statements or representation of fact.
2. Any areas, measurements or distances are approximate. The text, photographs and plans are for guidance only and are not necessarily comprehensive. It should not be assumed that the property has all necessary planning building regulation or other consents and Mellors Estate Agents have not tested any services, equipment or facilities. Purchasers must satisfy themselves by inspection or otherwise.

1 Grove Parade, Buxton, Derbyshire, SK17 6AJ
Tel: 01298 24383 Email: info@mellors.org.uk www.mellors.org.uk

Energy Efficiency Graph

