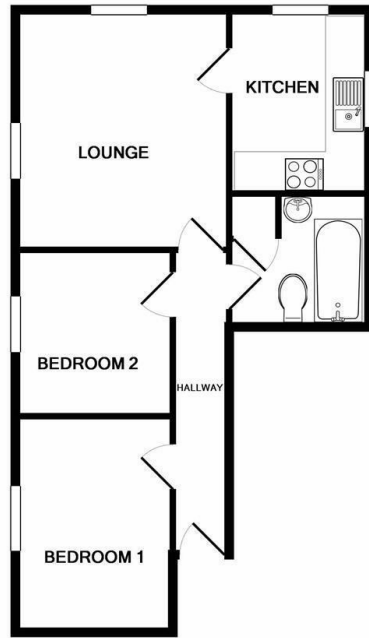




Flat 4, Castle House Castle Hill, Axminster, EX13 5NN

£700 Per Month

- A Well Presented 2 Bedroom Flat for Over 55s
- Country side view
- No pets
- EPC Rating C
- Kitchen with Hob and Oven
- Bathroom with Shower
- Double Glazed
- Lounge with Double Aspect Windows
- No Parking
- Electric Heating



TOTAL APPROX. FLOOR AREA 444 SQ.FT. (41.3 SQ.M.)

Whilst every attempt has been made to ensure the accuracy of the floor plan contained here, measurements of doors, windows, rooms and any other items are approximate and no responsibility is taken for any error, omission, or mis-statement. This plan is for illustrative purposes only and should be used as such by any prospective purchaser. The services, systems and appliances shown have not been tested and no guarantee as to their operability or efficiency can be given
Made with Metropix ©2018



Directions

From our office in West Street proceed up into the centre of town. Just before The George Hotel turn left and then immediately left again into Castle Hill. After a short distance down the hill, the property can be found on the right hand side on the corner of North Street.

Viewings

Viewings by arrangement only. Call 01297 630933 to make an appointment.

Council Tax Band

B

EPC Rating:

C

Energy Efficiency Rating		Current	Potential
<i>Very energy efficient - lower running costs</i>			
(92 plus) A			
(81-91) B			83
(69-80) C		70	
(55-68) D			
(39-54) E			
(21-38) F			
(1-20) G			
<i>Not energy efficient - higher running costs</i>			
England & Wales		EU Directive 2002/91/EC	