

Apartment (EPC Rating: B)

# **RIVERSIDE WHARF** **BISHOP'S STORTFORD** **CM23 3GN** **Per Calendar Month** **£1,450 Per**

- Available in January 2026
- 2 Double bedrooms
- 2 Bathrooms
- Balcony overlooking river
- Unfurnished
- Town centre location
- Secure allocated parking space
- Open plan fully fitted kitchen/living/dining room
- Gas central heating
- Attractive communal gardens



**Fordyce Furnivall**  
 Residential Sales & Letting Agents



# 2 Bedroom Apartment located in BISHOP'S STORTFORD

Being offered unfurnished and available for occupation from the beginning of JANUARY 2026, a 2 double bedroom apartment in the popular Riverside development with a balcony overlooking the River Stort, situated in the heart of the town only 2 minutes from the train station and all other local amenities. The second floor property comprises 2 double bedrooms, 2 bathrooms (one en-suite), a generous open plan living/dining area with fully fitted kitchen area, and a riverside facing balcony. Additional features include gas central heating, UPVC windows throughout, attractive communal gardens and a secure allocated parking space. **\*\*NO SHARERS PLEASE\*\***

## SITUATION

The busy market town of Bishop's Stortford offers an excellent range of amenities including multiple shopping facilities, excellent schooling for all ages and many sports and social facilities. There is also the mainline railway station providing connections to London Liverpool Street, Stansted Airport and Cambridge. The M11 intersection just outside of town offers connections to London and the M25 orbital motorway.

## OPEN PLAN LOUNGE/DINER/KITCHEN

20'9" x 14'3"

Radiator, TV & telephone points, UPVC double glazed sliding patio doors to the balcony, fully fitted kitchen with eye level and base units with roll top working surfaces over, built in AEG oven with electric hob and extractor hood over, integrated fridge/freezer and dishwasher, inset ceiling lights, stainless steel sink with mixer taps, wood flooring.

## BALCONY

With roof top views overlooking parts of Bishop's Stortford and the River Stort.

## BEDROOM 1

15'7" x 8'6"

UPVC window to the rear aspect, built in wardrobe, wood flooring, radiator, TV & telephone points.

## ENSUITE SHOWER ROOM

Large walk-in shower with sliding glass doors, pedestal wash hand basin, low flush WC, chrome heated towel rail, extractor fan.

## BEDROOM 2

11'5" x 9'0"

Radiator, wood flooring, TV & telephone points, UPVC windows to the rear aspect.

## BATHROOM

Bath with shower and folding glass screen, pedestal wash hand basin, low flush WC, chrome heated towel rail, extractor fan.

## COMMUNAL GARDENS

Pretty communal gardens running alongside the River Stort.

## PARKING

One allocated parking space accessed by electronic remote controlled metal gates.

## LOCAL AUTHORITY

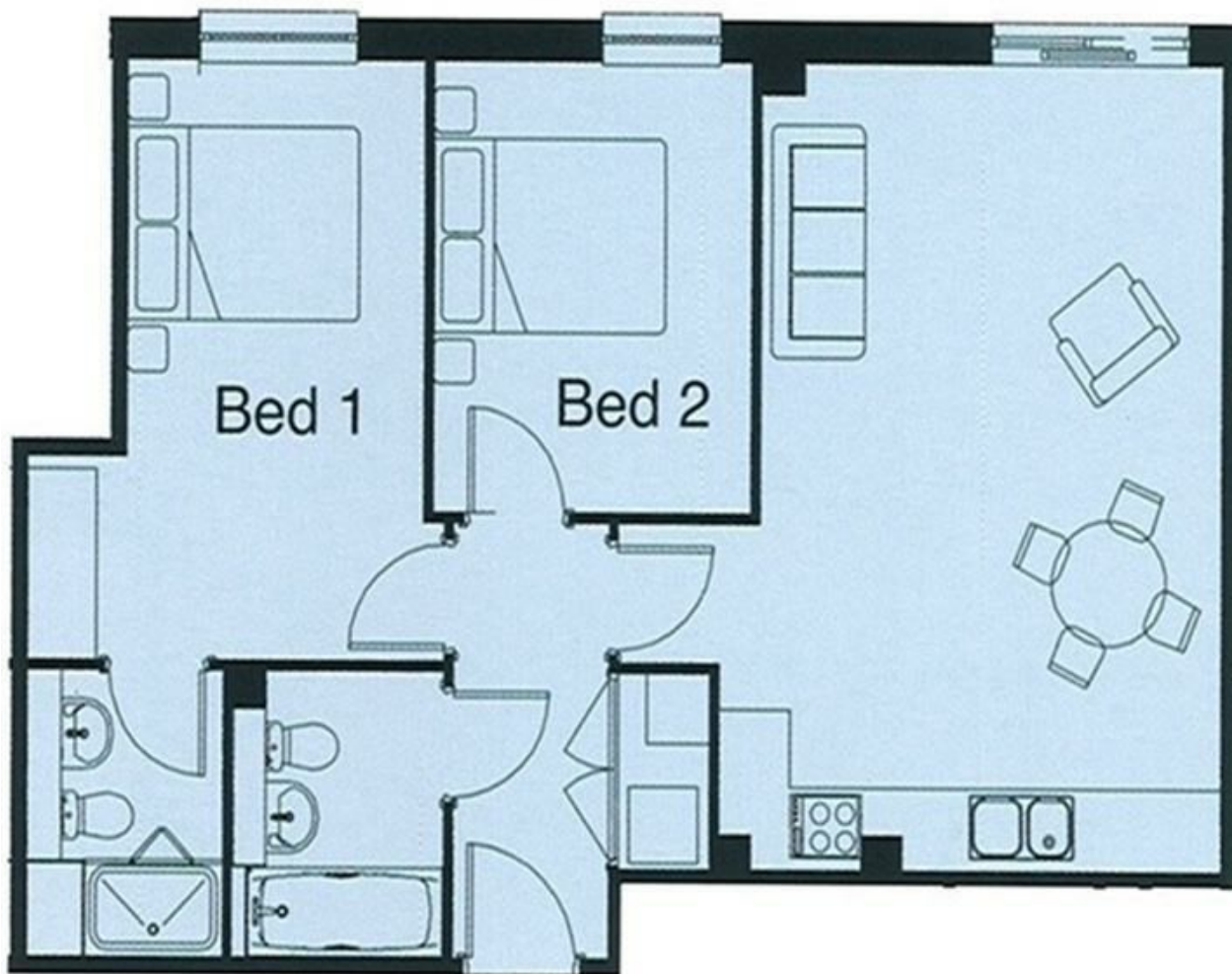
East Herts District Council

Tax Band: C

£2,079.67



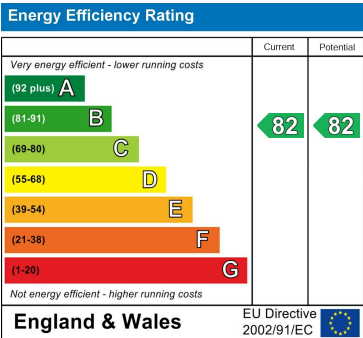




Council Tax Band

C

Energy Performance Graph



Call us on  
**01279 658758**

**lettings@fordycefurnivall.co.uk**  
**www.fordycefurnivall.co.uk**

Agents Note: Whilst every care has been taken to prepare these particulars, they are for guidance purposes only. All measurements are approximate and are for general guidance purposes only and whilst every care has been taken to ensure their accuracy, they should not be relied upon and potential buyers are advised to recheck the measurements.