

OFFERS IN THE REGION OF

£250,000

Mossley Place

Penistone, S36 6FH

PROPERTY SUMMARY

This beautifully presented three-bedroom home is arranged over three levels and offers generous living space, perfect for modern family life. Tucked away in a quiet, private location, it provides a peaceful retreat while remaining just a short distance from the heart of Penistone and the popular Pennine Trail.

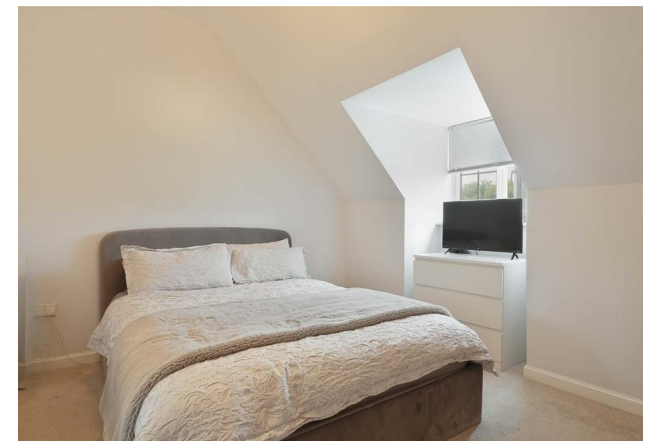
3



2



1

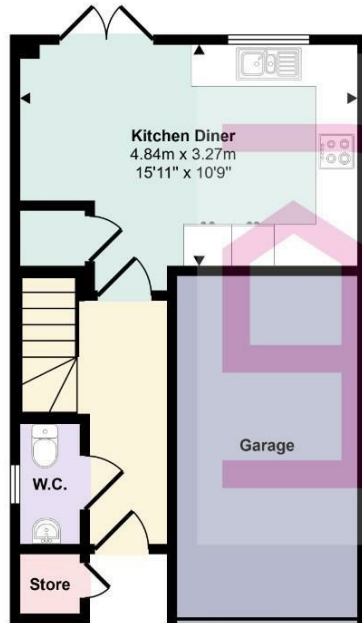




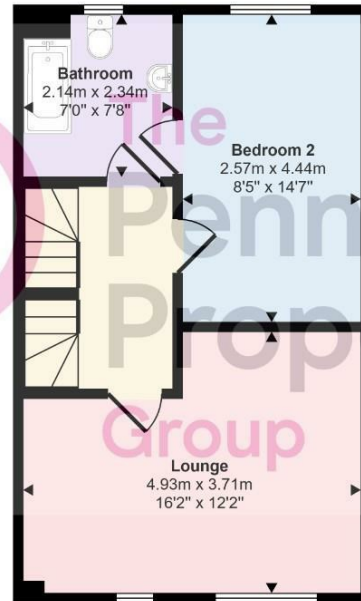




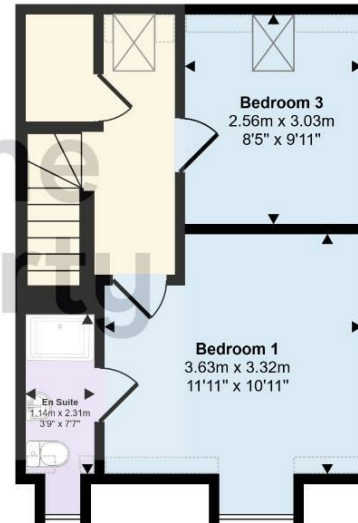
Approx Gross Internal Area
113 sq m / 1214 sq ft




Ground Floor
Approx 39 sq m / 420 sq ft



First Floor
Approx 41 sq m / 438 sq ft



Second Floor
Approx 33 sq m / 355 sq ft

 Denotes head height below 1.5m


This floorplan is only for illustrative purposes and is not to scale. Measurements of rooms, doors, windows, and any items are approximate and no responsibility is taken for any error, omission or mis-statement. Icons of items such as bathroom suites are representations only and may not look like the real items. Made with Made Snappy 360.

LOCAL AUTHORITY
BMBC

TENURE
Freehold

COUNCIL TAX BAND
C

VIEWINGS
By prior appointment only

Energy Efficiency Rating		
	Current	Potential
Very energy efficient - lower running costs		
(92 plus) A		88
(81-91) B		
(69-80) C	77	
(55-68) D		
(39-54) E		
(21-38) F		
(1-20) G		
Not energy efficient - higher running costs		
England & Wales		EU Directive 2002/91/EC 

Agents Note: Whilst every care has been taken to prepare these particulars, they are for guidance purposes only. All measurements are approximate and are for general guidance purposes only and whilst every care has been taken to ensure their accuracy, they should not be relied upon and potential buyers/tenants are advised to recheck the measurements

OFFICE ADDRESS
12 St Marys Street
Penistone
Sheffield
South Yorkshire
S36 6DT

OFFICE DETAILS
01226 766755
info@pennineproperty.co.uk