



The
Pennine
Property
Group



OFFERS IN THE REGION OF

£595,000

Lee Lane

Sheffield, S36 9LN

PROPERTY SUMMARY

Set within a picturesque village position and enjoying breathtaking open aspect countryside views, this stunning detached bungalow offers the perfect blend of luxury, tranquillity and modern day living. Having undergone an extensive renovation programme, the property now presents a beautifully finished, turn-key home with exceptional attention to detail and high specification finishes throughout.

3



2



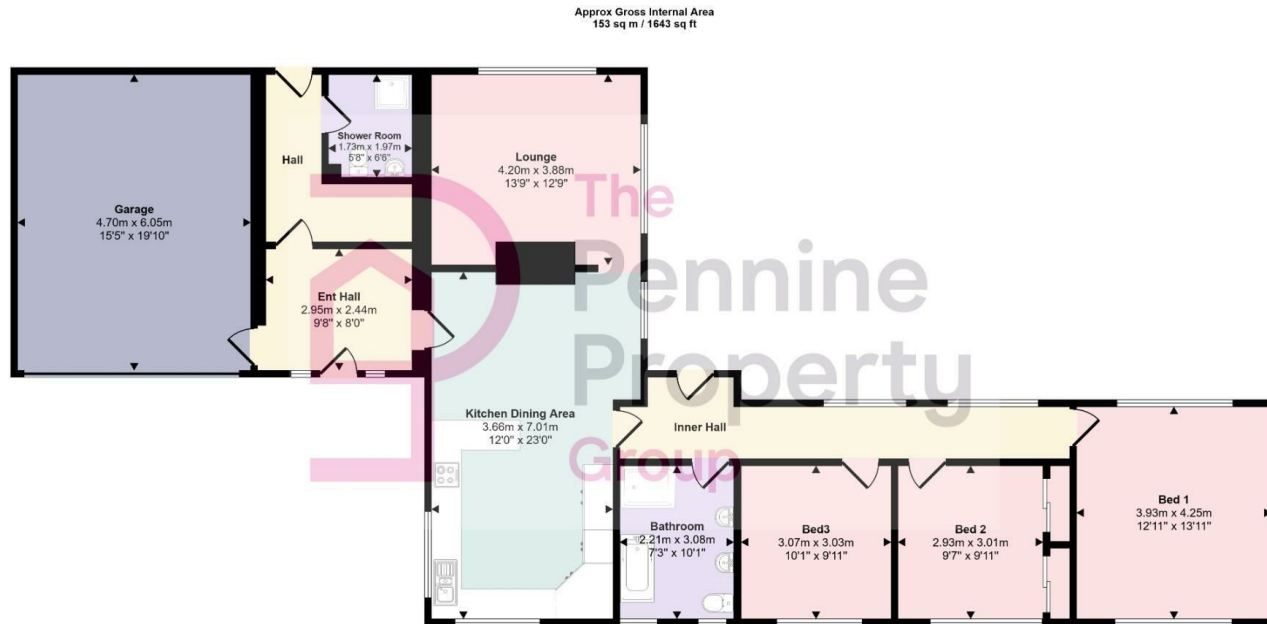
2











Floorplan

This floorplan is only for illustrative purposes and is not to scale. Measurements of rooms, doors, windows, and any items are approximate and no responsibility is taken for any error, omission or mis-statement. Icons of items such as bathroom suites are representations only and may not look like the real items. Made with Made Snappy 360.

LOCAL AUTHORITY

BMBC

TENURE

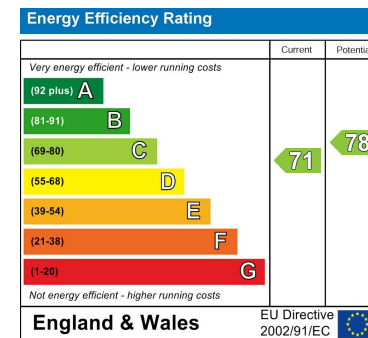
Freehold

COUNCIL TAX BAND

E

VIEWINGS

By prior appointment only



Agents Note: Whilst every care has been taken to prepare these particulars, they are for guidance purposes only. All measurements are approximate and are for general guidance purposes only and whilst every care has been taken to ensure their accuracy, they should not be relied upon and potential buyers/tenants are advised to recheck the measurements

OFFICE ADDRESS

12 St Marys Street
Penistone
Sheffield
South Yorkshire
S36 6DT

OFFICE DETAILS

01226 766755
info@pennineproperty.co.uk