

OFFERS IN THE REGION OF

£475,000

Home Farm Court

Sheffield, S35 7DT



## PROPERTY SUMMARY

Tucked away in the charming semi-rural area of Wortley, Sheffield, this delightful barn conversion at Home Farm Court which was converted in the 1990's and offers a perfect blend of countryside living and modern convenience. With four spacious bedrooms and an exceptionally large reception room opening up into the garden room, this property is ideal for families or those seeking extra space. With period features such as exposed stonework and timber beams, this property oozes charm and character.

4



2



2















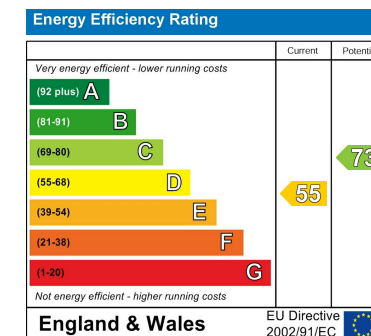
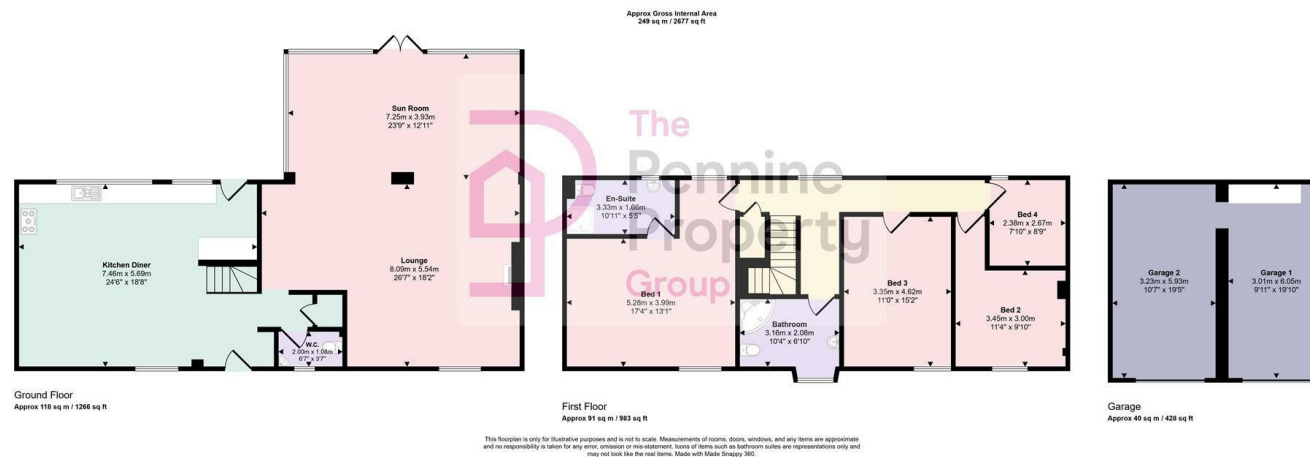


**LOCAL AUTHORITY**  
BMBC

**TENURE**  
Freehold

**COUNCIL TAX BAND**  
F

**VIEWINGS**  
By prior appointment only



Agents Note: Whilst every care has been taken to prepare these particulars, they are for guidance purposes only. All measurements are approximate and are for general guidance purposes only and whilst every care has been taken to ensure their accuracy, they should not be relied upon and potential buyers/tenants are advised to recheck the measurements

**OFFICE ADDRESS**  
12 St Marys Street  
Penistone  
Sheffield  
South Yorkshire  
S36 6DT

**OFFICE DETAILS**  
01226 766755  
info@pennineproperty.co.uk