



The
Pennine
Property
Group

OFFERS OVER

£425,000

Mortimer Road

Penistone, S36 9DF

PROPERTY SUMMARY

Rarely does an opportunity like this come to market. Occupying an exceptionally generous plot in one of Penistone's most desirable locations, this three-bedroom home offers incredible potential for its next owners. Having two spacious reception rooms and three bedrooms, providing flexible accommodation with plenty of scope to modernise and personalise to your own taste.

3



1



2









LOCAL AUTHORITY

BMBC

TENURE

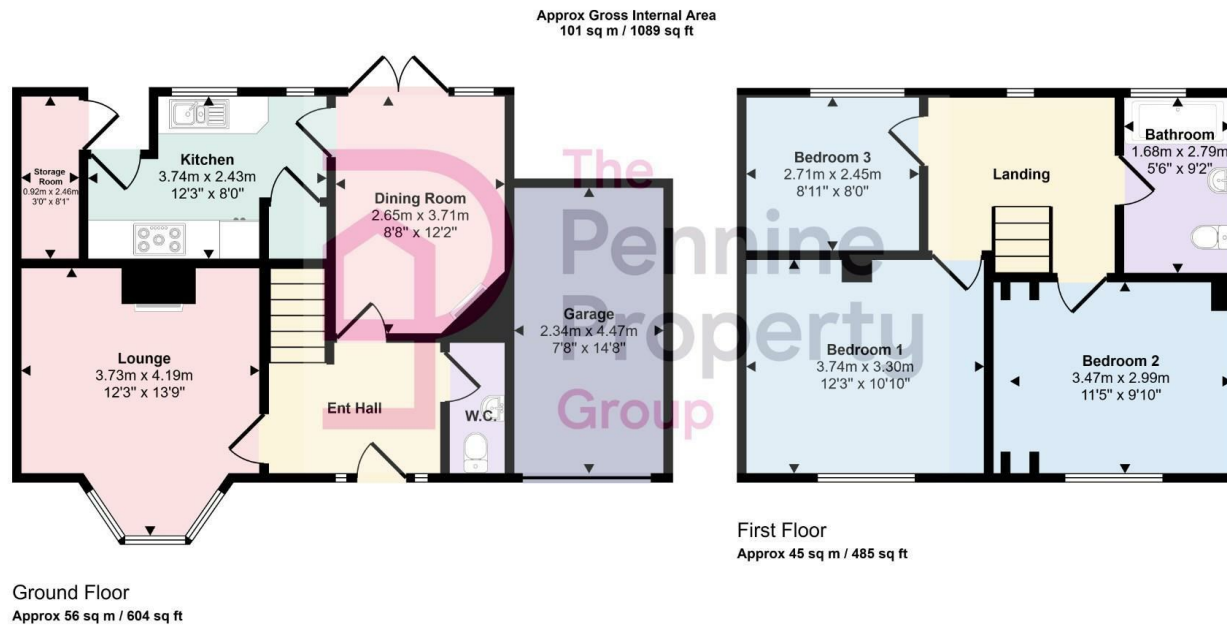
Freehold

COUNCIL TAX BAND

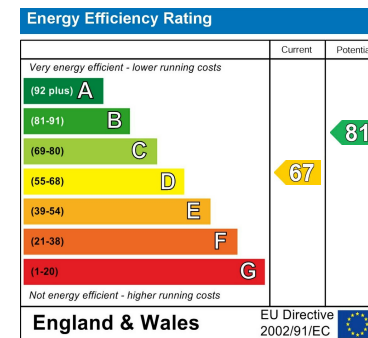
D

VIEWINGS

By prior appointment only



This floorplan is only for illustrative purposes and is not to scale. Measurements of rooms, doors, windows, and any items are approximate and no responsibility is taken for any error, omission or mis-statement. Icons of items such as bathroom suites are representations only and may not look like the real items. Made with Made Snappy 360.



Agents Note: Whilst every care has been taken to prepare these particulars, they are for guidance purposes only. All measurements are approximate and are for general guidance purposes only and whilst every care has been taken to ensure their accuracy, they should not be relied upon and potential buyers/tenants are advised to recheck the measurements

OFFICE ADDRESS

12 St Marys Street
 Penistone
 Sheffield
 South Yorkshire
 S36 6DT

OFFICE DETAILS

01226 766755
 info@pennineproperty.co.uk