

OFFERS IN THE REGION OF

£240,000

Wellthorne Avenue

Ingbirchworth, S36 7GH

The Pennine Property Group
For Sale

PROPERTY SUMMARY

Nestled in the heart of the sought-after village of Ingbirchworth, this charming semi-detached home on Wellthorne Avenue has been lovingly owned by the same family for over 50 years and is now ready for its next chapter. Enjoying an enviable position close to picturesque countryside walks, the property offers a wonderful balance of rural tranquility and everyday convenience.

3



1



2

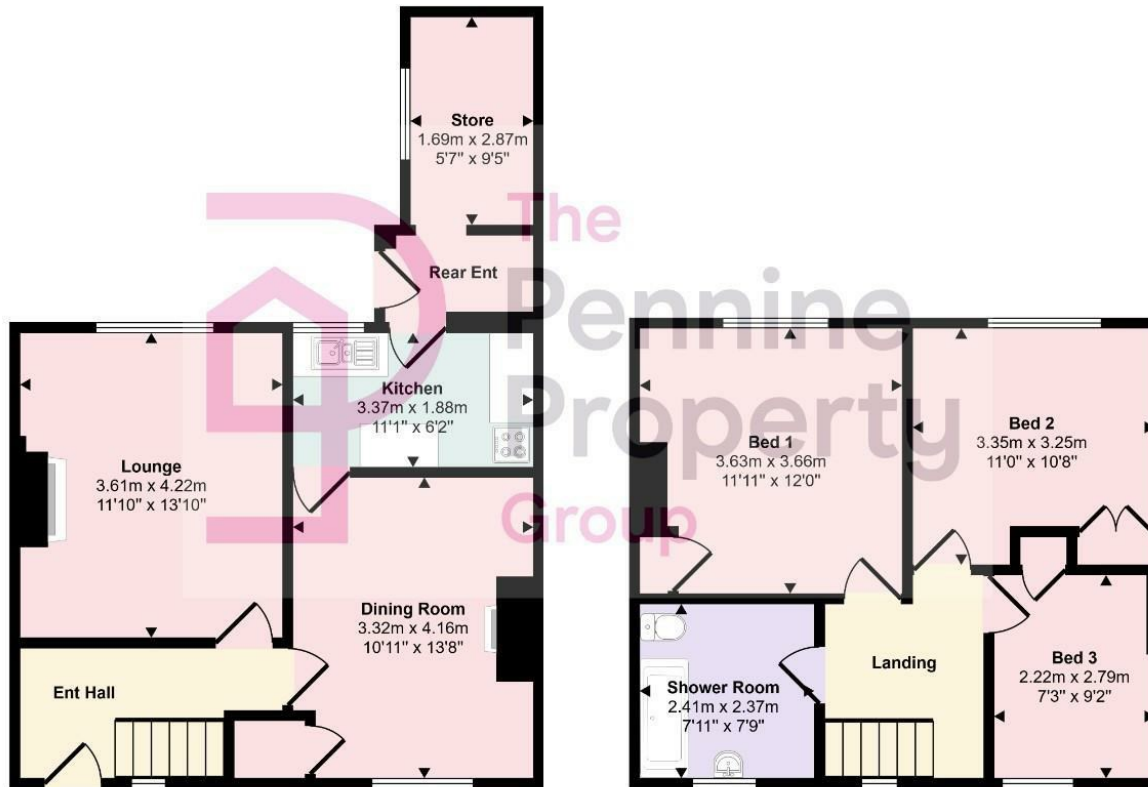








Approx Gross Internal Area
96 sq m / 1032 sq ft



This floorplan is only for illustrative purposes and is not to scale. Measurements of rooms, doors, windows, and any items are approximate and no responsibility is taken for any error, omission or mis-statement. Icons of items such as bathroom suites are representations only and may not look like the real items. Made with Made Snappy 360.

LOCAL AUTHORITY
BMBC

TENURE
Freehold

COUNCIL TAX BAND
B

VIEWINGS
By prior appointment only

Energy Efficiency Rating		
	Current	Potential
Very energy efficient - lower running costs		
(92 plus) A		
(81-91) B		
(69-80) C		
(55-68) D		
(39-54) E		
(21-38) F		
(1-20) G		
Not energy efficient - higher running costs		
England & Wales	EU Directive 2002/91/EC	

Agents Note: Whilst every care has been taken to prepare these particulars, they are for guidance purposes only. All measurements are approximate and are for general guidance purposes only and whilst every care has been taken to ensure their accuracy, they should not be relied upon and potential buyers/tenants are advised to recheck the measurements

OFFICE ADDRESS
12 St Marys Street
Penistone
Sheffield
South Yorkshire
S36 6DT

OFFICE DETAILS
01226 766755
info@pennineproperty.co.uk