



60 King Edward Street, Sunderland Road, Gateshead, Tyne & Wear, NE8 3PR

£695 Per Calendar Month



Key features

- THREE BEDROOM UPPER FLAT
- MODERN NEUTRAL DECOR THROUGHOUT
- WELL PRESENTED FITTED KITCHEN
- FAMILY BATHROOM WITH SHOWER
- THREE GOOD SIZE BEDROOMS
- UNFURNISHED BASIS
- ACCESS TO REAR YARD
- GREAT TRANSPORT LINKS
- UPVC DOUBLE GLAZING
- AVAILABLE OCTOBER 2025

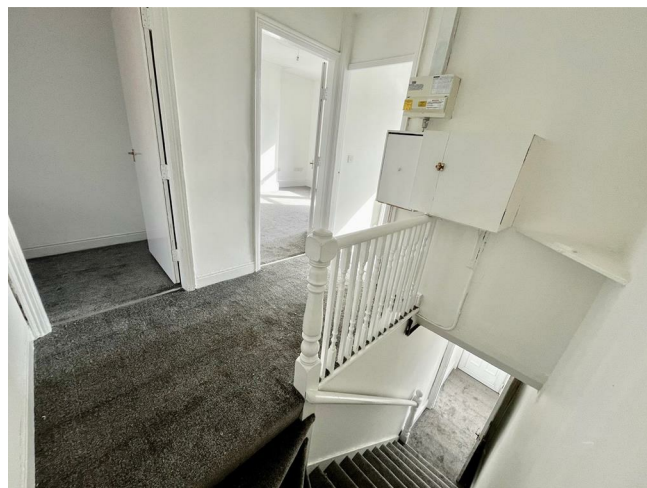


Description

Nestled in the heart of Gateshead, on King Edward Street, Sunderland Road, awaits a charming three-bedroom flat. As you step inside, you'll be greeted by a modern decor that flows effortlessly throughout the property, creating a warm and inviting atmosphere.

This delightful flat boasts a spacious reception room, three cosy bedrooms, and a family bathroom with shower. The fitted kitchen is a true highlight of this property, offering a stylish space to whip up delicious meals and create lasting memories.

Located in a vibrant area, this flat is surrounded by amenities, schools, and parks, making it an ideal choice for families or professionals looking for convenience and comfort. Don't miss out on the opportunity to make this charming flat your own.



ENTRANCE

LOUNGE

10 4 x 14 10

KITCHEN

11 11 x 7 4

BATHROOM

9 3 x 6

BEDROOM ONE

12 6 x 14 3

BEDROOM TWO

7 11 x 14 8

BEDROOM THREE

9 11 x 7 9

EXTERNAL

DISCLAIMER LETTINGS







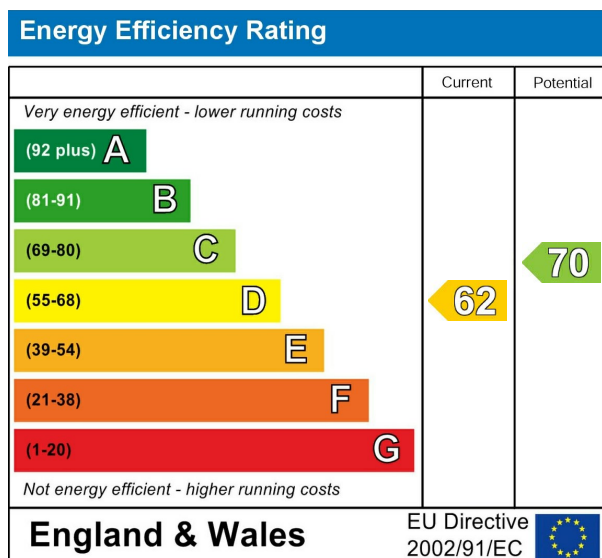
WE REQUIRE

One month's rent in advance = £695.00

One month's rent as a damage deposit = £695.00

To hold this property from other viewings while references are carried out, we require one weeks rent as a holding deposit.

The particulars on these properties are set out as a general guidance for intended for tenants contracts The Agent has not tested any apparatus, equipment, fixtures and fittings or services and so cannot verify that they are in working order or fit for the purpose. Tenants should not rely on them as statements of fact but must satisfy themselves by inspection or otherwise as to the correctness of each of them. Items shown in photographs are NOT included unless specifically mentioned within the particulars. Measurements have been taken using a laser distance meter and may be subject to a margin of error. For further information see the Consumer Protection from Unfair Trading.



212 High Street
Gateshead
Tyne And Wear
NE8 1AQ
0191 500 8 500
info@carouselestateagents.com
<https://www.carouselestateagents.com>

