



17 Windsor Avenue, Bensham, Gateshead, Tyne & Wear, NE8 4NU

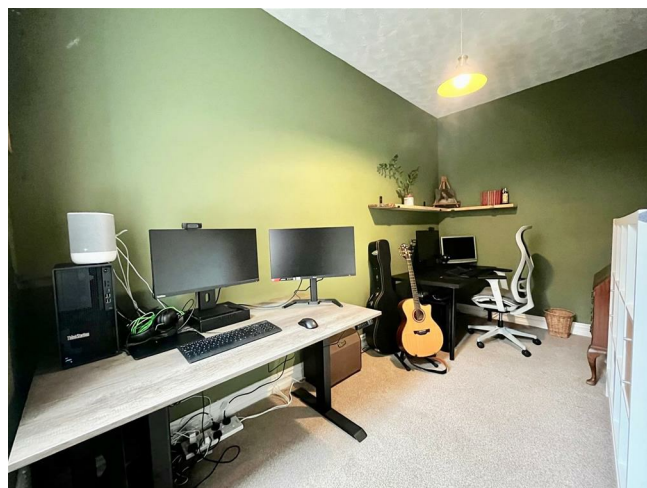
Offers Over £85,000





## Key features

- TWO DOUBLE BEDROOMS
- GROUND FLOOR FLAT
- FITTED KITCHEN
- GAS CENTRAL HEATING
- UPVC DOUBLE GLAZING
- CLOSE TO LOCAL SHOPS
- NEXT TO SALTWELL PARK
- GREAT STARTER HOME
- MODERN WHITE BATHROOM
- VIEWING ADVISED



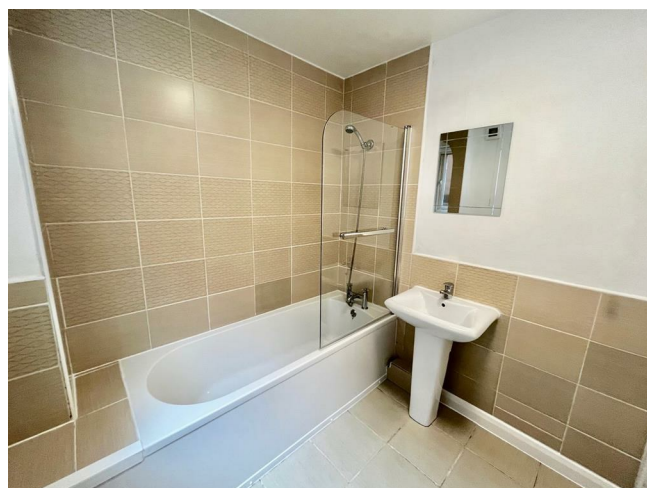
## Description

Welcome to this immaculate ground floor flat located on Windsor Avenue in the desirable area of Bensham, Gateshead. This delightful property features two spacious double bedrooms, making it an ideal choice for couples, small families, or individuals seeking extra space.

As you enter the flat, you will find a welcoming reception room that provides a perfect setting for relaxation or entertaining guests. The fitted kitchen is both practical and stylish, offering ample storage and workspace for all your culinary needs. The modern bathroom is designed with comfort in mind, featuring contemporary fixtures that enhance the overall appeal of the home.

One of the standout features of this property is its prime location. Situated within walking distance to the beautiful Saltwell Park, residents can enjoy leisurely strolls, picnics, and various outdoor activities in this picturesque green space.

This flat presents an excellent opportunity for those looking to settle in a vibrant community with convenient access to local amenities and transport links. With its combination of comfort, style, and a fantastic location, this property is sure to attract interest. Do not miss the chance to make this lovely flat your new home.





ENTRANCE HALL

15'1 x 3'1

LOUNGE

14'2" x 12'3"

KITCHEN

11'8 x 7'2

BEDROOM ONE

16' x 12'10"

BEDROOM TWO

14'2" x 7'5"

BATHROOM

6'11 x 6'8

EXTERNAL

DISCLAIMER SALES



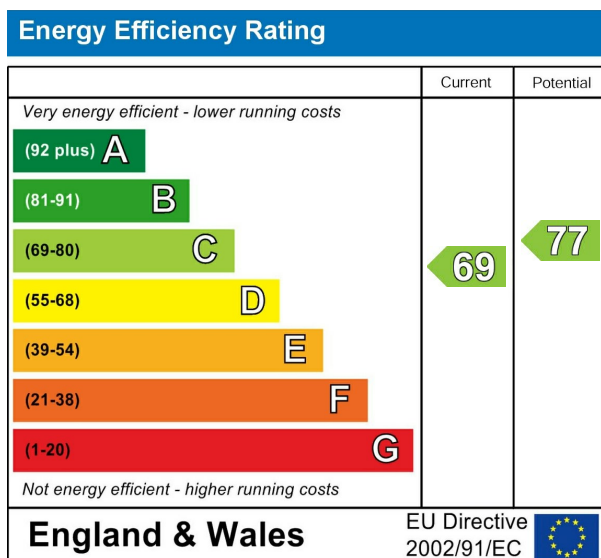








The particulars on these properties are set out as a general guidance for intended purchasers or tenants, and do not constitute part of an offer or contract. The Agent has not tested any apparatus, equipment, fixtures and fittings or services and so cannot verify that they are in working order or fit for the purpose. A Buyer is advised to obtain verification from their Solicitor or Surveyor. References to the Tenure of a Property are based on information supplied by the Seller. The Agent has not had sight of the title documents. A Buyer is advised to obtain verification from their Solicitor. All dimensions, descriptions and distances, reference to condition and necessary permissions for use and occupation, and other details are given without responsibility. Any intending purchasers or tenants should not rely on them as statements of fact, but must satisfy themselves by inspection or otherwise as to the correctness of each of them. Items shown in photographs are NOT included unless specifically mentioned within the sales particulars. They may however be available by separate negotiation. Measurements have been taken using a laser distance meter and may be subject to a margin of error. For further information see the Consumer Protection from Unfair Trading Regulations.



212 High Street  
Gateshead  
Tyne And Wear  
NE8 1AQ  
0191 500 8 500  
info@carouselestateagents.com  
<https://www.carouselestateagents.com>

