



119 Sanderson Villas, St James Village, Gateshead, Tyne & Wear, NE8 3BU

Offers Over £99,950



Key features

- TOP FLOOR FLAT
- TWO BEDROOMS
- OPEN PLAN LIVING
- NO ONWARD CHAIN
- UPVC WINDOWS
- JULIETTE BALCONY
- OFF STREET PARKING
- GREAT ROAD LINKS
- CLOSE TO METRO SYSTEM



Description

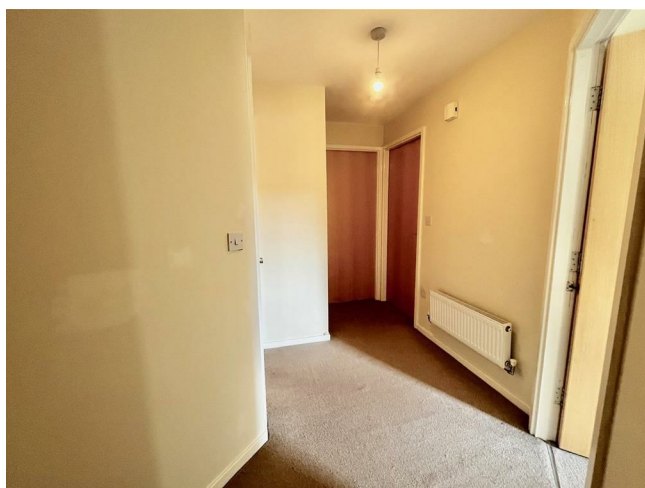
Offered with NO ONWARD CHAIN, we welcome to this charming top floor apartment located in the desirable Sanderson Villas, nestled within the picturesque St James Village in Gateshead. This delightful property boasts two spacious double bedrooms, making it an ideal choice for couples, small families, or those seeking a comfortable space to call home.

As you enter the apartment, you are greeted by an airy lounge designed in the popular Airton style, which offers a warm and inviting atmosphere perfect for relaxation or entertaining guests. The well-appointed bathroom ensures convenience and comfort, catering to all your daily needs.

One of the standout features of this property is its prime location. Situated within walking distance of the metro station, commuting to nearby areas or exploring the vibrant city of Gateshead and Newcastle is both easy and convenient. The surrounding area is highly sought after, providing a blend of tranquillity and accessibility to local amenities, parks, and recreational facilities.

Additionally, the apartment includes parking for one vehicle, a valuable asset in this bustling area. Built between 2000 and 2009, this property combines modern living with a sense of community, making it a perfect choice for those looking to settle in a friendly neighbourhood.

In summary, this top floor flat in Sanderson Villas offers a wonderful opportunity to enjoy comfortable living in a sought-after location. With its two double bedrooms, inviting lounge, and convenient access to transport links, this property is not to be missed. We invite you to come and experience the charm of this lovely apartment for yourself.



ENTRANCE HALL

LOUNGE/DINER
19'5" x 11'11"

KITCHEN
11'9" x 6'8"

BATHROOM
9'3" x 5'6"

BEDROOM ONE
11'1" x 10'8"

BEDROOM TWO
10'10" x 7'5"
UPVC window and central heating radiator.

EXTERNAL

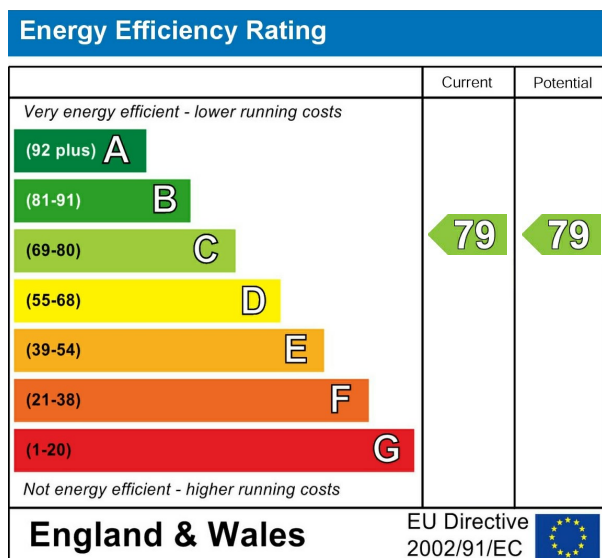
DISCLAIMER SALES







The particulars on these properties are set out as a general guidance for intended purchasers or tenants, and do not constitute part of an offer or contract. The Agent has not tested any apparatus, equipment, fixtures and fittings or services and so cannot verify that they are in working order or fit for the purpose. A Buyer is advised to obtain verification from their Solicitor or Surveyor. References to the Tenure of a Property are based on information supplied by the Seller. The Agent has not had sight of the title documents. A Buyer is advised to obtain verification from their Solicitor. All dimensions, descriptions and distances, reference to condition and necessary permissions for use and occupation, and other details are given without responsibility. Any intending purchasers or tenants should not rely on them as statements of fact, but must satisfy themselves by inspection or otherwise as to the correctness of each of them. Items shown in photographs are NOT included unless specifically mentioned within the sales particulars. They may however be available by separate negotiation. Measurements have been taken using a laser distance meter and may be subject to a margin of error. For further information see the Consumer Protection from Unfair Trading Regulations.



212 High Street
Gateshead
Tyne And Wear
NE8 1AQ
0191 500 8 500
info@carouselestateagents.com
<https://www.carouselestateagents.com>

