



220 Milburn Road, Ashington, Northumberland, NE63 0PJ

Asking Price £124,950





## Key features

- MID TERRACED HOUSE
- SPACIOUS PROPERTY THROUGHOUT
- GREAT FAMILY HOME
- NO ONWARD CHAIN
- GREAT SIZE KITCHEN/DINER
- THREE BEDROOMS
- BATHROOM WITH SHOWER
- FRONT GARDEN
- REAR YARD/OFF STREET PARKING
- UTILITY ROOM

## Description

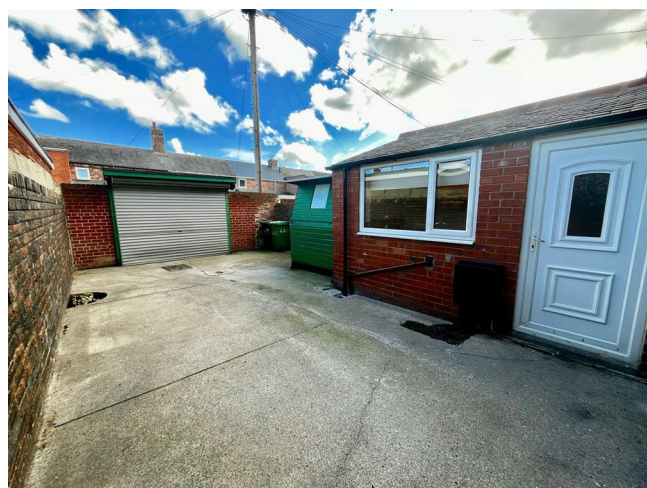
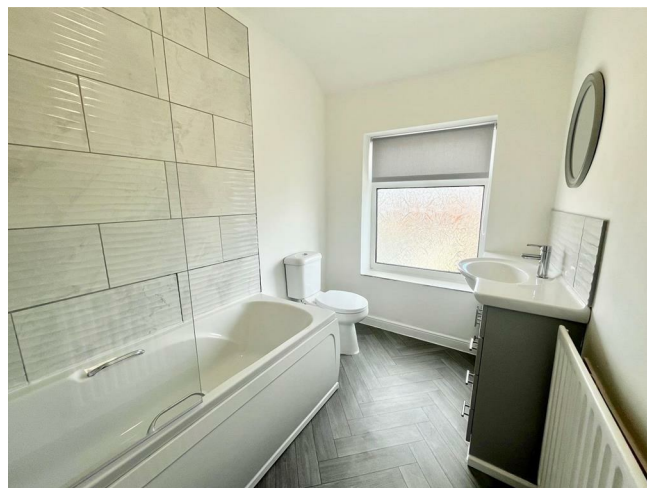
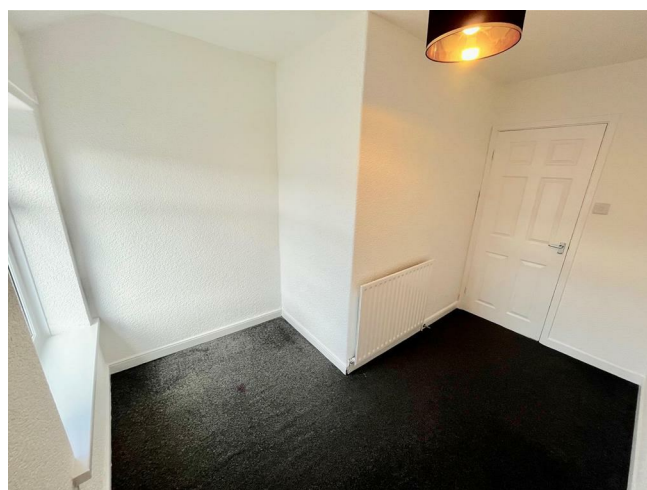
Nestled on Milburn Road in the charming town of Ashington, this delightful terraced house presents an excellent opportunity for families seeking a comfortable and spacious home. Built in the 1920s, the property boasts a characterful charm that is both inviting and practical.

The house features three well-proportioned bedrooms, providing ample space for family living or accommodating guests. The single reception room is generously sized, offering a versatile area that can be tailored to your needs, whether it be a cosy lounge or a vibrant playroom for children. The layout is designed to maximise space and light, creating a warm and welcoming atmosphere throughout.

The property includes a bathroom that caters to the needs of a modern family, ensuring convenience and comfort. One of the standout features of this home is the off-street parking, allowing for easy access and peace of mind.

With no onward chain, this property is ready for you to move in without delay, making it an ideal choice for those looking to settle in quickly. The spaciousness of the home, combined with its family-friendly layout, makes it a perfect fit for those seeking a long-term residence in a friendly community.

In summary, this terraced house on Milburn Road is a fantastic family home that offers both space and convenience, all within a lovely neighbourhood. Don't miss the chance to make this charming property your own.





ENTRANCE HALL

LOUNGE

15'5 x 14

KITCHEN

14'9 x 11'11

UTILITY ROOM

12 x 6'1

FIRST FLOOR

BEDROOM ONE

14'1 x 10'5

BEDROOM TWO

12'1 x 11'3

BEDROOM THREE

10'10 x 8'8











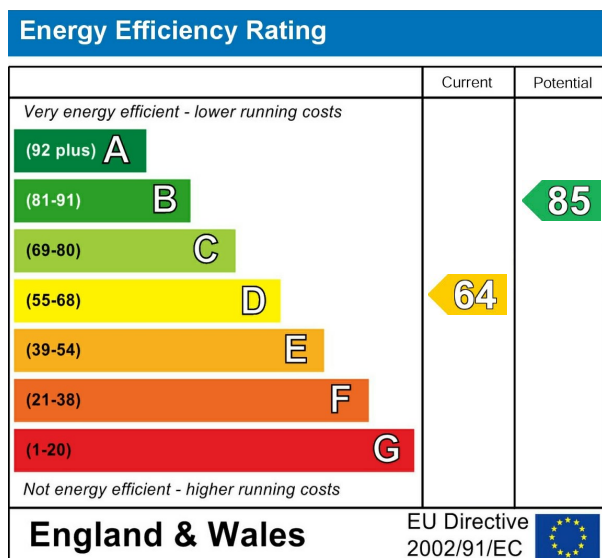
## BATHROOM

8'9 x 5'11

## EXTERNAL

## DISCLAIMER SALES

The particulars on these properties are set out as a general guidance for intended purchasers or tenants, and do not constitute part of an offer or contract. The Agent has not tested any apparatus, equipment, fixtures and fittings or services and so cannot verify that they are in working order or fit for the purpose. A Buyer is advised to obtain verification from their Solicitor or Surveyor. References to the Tenure of a Property are based on information supplied by the Seller. The Agent has not had sight of the title documents. A Buyer is advised to obtain verification from their Solicitor. All dimensions, descriptions and distances, reference to condition and necessary permissions for use and occupation, and other details are given without responsibility. Any intending purchasers or tenants should not rely on them as statements of fact, but must satisfy themselves by inspection or otherwise as to the correctness of each of them. Items shown in photographs are NOT included unless specifically mentioned within the sales particulars. They may however be available by separate negotiation. Measurements have been taken using a laser distance meter and may be subject to a margin of error. For further information see the Consumer Protection from Unfair Trading Regulations.



212 High Street  
Gateshead  
Tyne And Wear  
NE8 1AQ  
0191 500 8 500  
info@carouselestateagents.com  
<https://www.carouselestateagents.com>

