



59 Westbourne Avenue, Bensham, Gateshead, Tyne & Wear, NE8 4NF

Offers Over £85,000



## Key features

- UPPER FLAT
- TWO DOUBLE BEDROOMS
- MODERN KITCHEN
- THREE PIECE SUITE BATHROOM
- GAS CENTRAL HEATING
- UPVC DOUBLE GLAZING
- GREAT TRANSPORT LINKS
- CLOSE TO LOCAL AMENITIES
- WALKING DISTANCE TO SALTWELL PARK
- NO ONWARD CHAIN

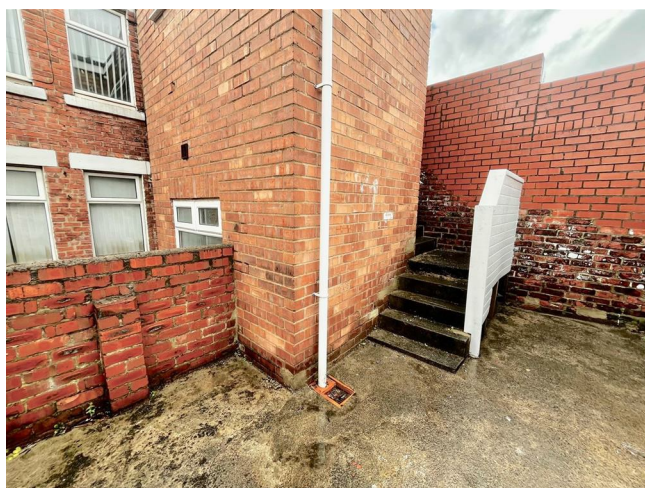
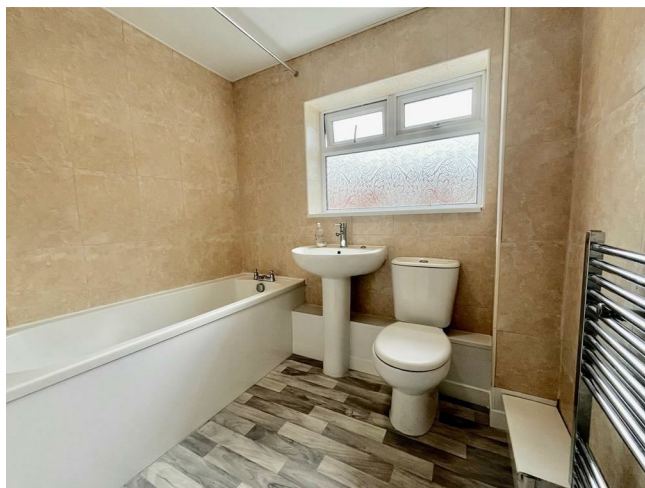


## Description

Located on Westbourne Avenue in the popular area of Bensham, Gateshead, this recently renovated upper flat presents an excellent opportunity for both first-time buyers and investors alike. Boasting two well-proportioned bedrooms, this property is designed to offer comfort and convenience. The inviting reception room provides a perfect space for relaxation or entertaining guests, while the modern bathroom adds a touch of luxury to everyday living.

One of the standout features of this flat is its superb transport links, making it easy to commute to nearby cities and explore the surrounding areas. Additionally, the property is situated in close proximity to the picturesque Saltwell Park, where residents can enjoy leisurely walks, picnics, and various outdoor activities.

With no onward chain, this flat is ready for you to move in without delay. Whether you are looking to settle down in a vibrant community or seeking a promising rental investment, this property is sure to meet your needs. Do not miss the chance to make this delightful flat your new home.



ENTRANCE HALL

LANDING

LOUNGE

17'11 x 15'1

KITCHEN

9'4 x 7'11

BEDROOM ONE

16'10 x 11'7

BEDROOM TWO

7'10 x 7'8

BATHROOM

7'4 x 6'5

EXTERNAL

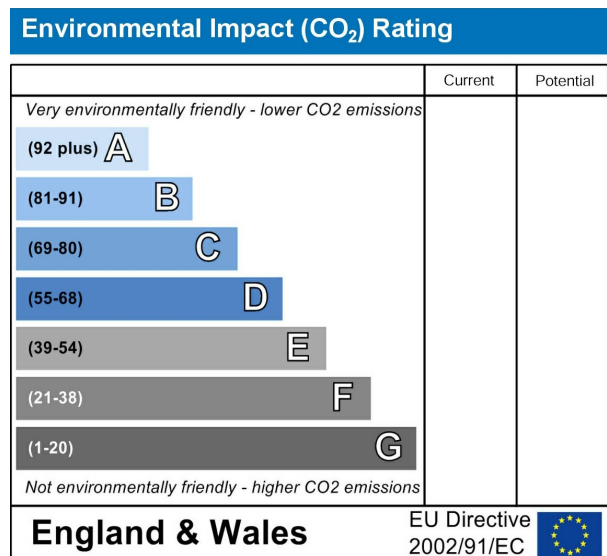
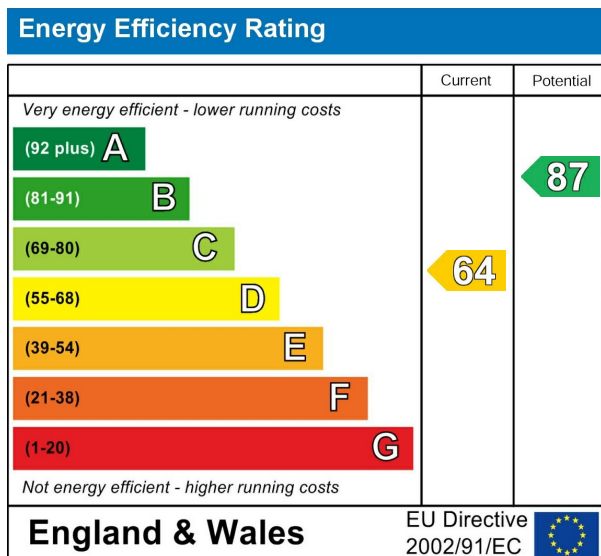
DISCLAIMER SALES







The particulars on these properties are set out as a general guidance for intended purchasers or tenants, and do not constitute part of an offer or contract. The Agent has not tested any apparatus, equipment, fixtures and fittings or services and so cannot verify that they are in working order or fit for the purpose. A Buyer is advised to obtain verification from their Solicitor or Surveyor. References to the Tenure of a Property are based on information supplied by the Seller. The Agent has not had sight of the title documents. A Buyer is advised to obtain verification from their Solicitor. All dimensions, descriptions and distances, reference to condition and necessary permissions for use and occupation, and other details are given without responsibility. Any intending purchasers or tenants should not rely on them as statements of fact, but must satisfy themselves by inspection or otherwise as to the correctness of each of them. Items shown in photographs are NOT included unless specifically mentioned within the sales particulars. They may however be available by separate negotiation. Measurements have been taken using a laser distance meter and may be subject to a margin of error. For further information see the Consumer Protection from Unfair Trading Regulations.



212 High Street  
Gateshead  
Tyne And Wear  
NE8 1AQ  
0191 500 8 500  
info@carouselestateagents.com  
<https://www.carouselestateagents.com>

