



2 May Courtyard, Shrove Pass, Gateshead, Tyne & Wear, NE8 2GD

Offers Over £179,950



Key features

- MID TERRACED PROPERTY
- THREE BEDROOMS
- OPEN PLAN LOUNGE/KITCHEN/DINING
- FITTED KITCHEN
- MODERN BATHROOM
- SOUTH FACING GARDEN
- CLOSE TO LOCAL AMENITIES
- AWARD WINNING ESTATE
- SOUGHT AFTER LOCATION
- VIEWING ADVISED



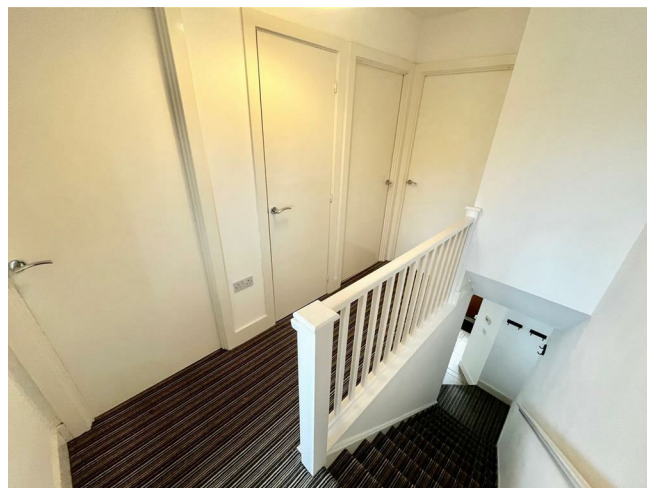
Description

Located in the desirable May Courtyard on Shrove Pass, Gateshead, this charming terraced house presents an excellent opportunity for both first-time buyers and families alike. The property boasts three well-proportioned bedrooms, providing ample space for comfortable living. The inviting reception room serves as a perfect gathering space, ideal for entertaining guests or enjoying quiet evenings at home.

The house features a well-appointed bathroom, ensuring convenience for all residents. One of the standout attributes of this property is the availability of parking for one vehicle, a valuable asset in this sought-after location.

Situated close to local amenities, residents will benefit from easy access to shops, schools, and recreational facilities, making daily life both convenient and enjoyable. The absence of an onward chain simplifies the buying process, allowing for a smoother transition into your new home.

This terraced house is not just a property; it is a place where memories can be made. With its appealing features and prime location, it is sure to attract considerable interest. Do not miss the chance to view this delightful home.



ENTRANCE HALL

DOWNSTAIRS W.C.

5'5 x 2'9

LOUNGE

14'5 x 12'7

KITCHEN/DINING

15'9 x 9'11

LANDING

BEDROOM ONE

12'5 x 9'2

BEDROOM TWO

10'3 x 9'6

BEDROOM THREE

7'4 x 6'11







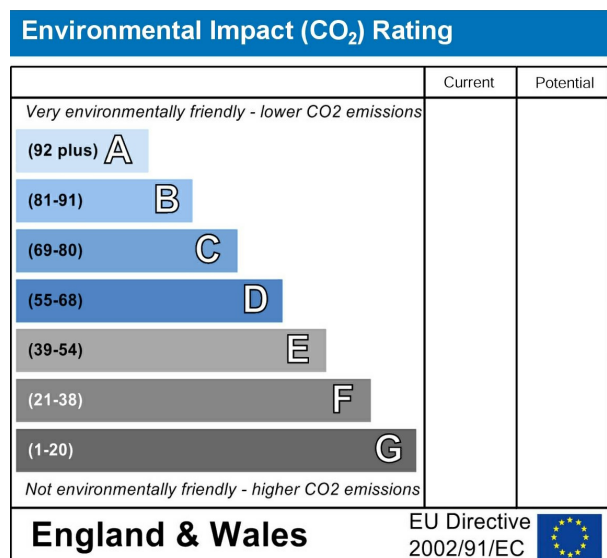
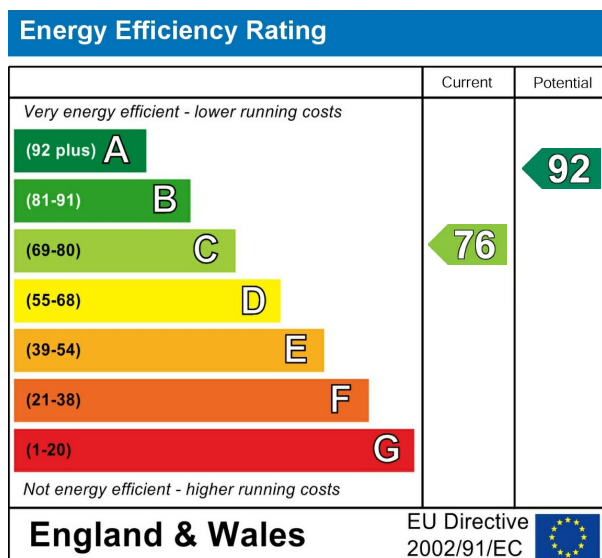
BATHROOM

6'5 x 6'2

EXTERNAL

DISCLAIMER SALES

The particulars on these properties are set out as a general guidance for intended purchasers or tenants, and do not constitute part of an offer or contract. The Agent has not tested any apparatus, equipment, fixtures and fittings or services and so cannot verify that they are in working order or fit for the purpose. A Buyer is advised to obtain verification from their Solicitor or Surveyor. References to the Tenure of a Property are based on information supplied by the Seller. The Agent has not had sight of the title documents. A Buyer is advised to obtain verification from their Solicitor. All dimensions, descriptions and distances, reference to condition and necessary permissions for use and occupation, and other details are given without responsibility. Any intending purchasers or tenants should not rely on them as statements of fact, but must satisfy themselves by inspection or otherwise as to the correctness of each of them. Items shown in photographs are NOT included unless specifically mentioned within the sales particulars. They may however be available by separate negotiation. Measurements have been taken using a laser distance meter and may be subject to a margin of error. For further information see the Consumer Protection from Unfair Trading Regulations.



212 High Street
Gateshead
Tyne And Wear
NE8 1AQ
0191 500 8 500
info@carouselestateagents.com
<https://www.carouselestateagents.com>

