



38 Fern Dene Road, Bensham, Gateshead, Tyne & Wear, NE8 4RX

Offers In Excess Of £80,000





## Key features

- UPPER FLAT
- THREE DOUBLE BEDROOMS
- FITTED KITCHEN
- THREE PIECE SUITE BATHROOM
- GAS CENTRAL HEATING
- UPVC DOUBLE GLAZING
- CLOSE TO SALTWELL PARK
- GREAT TRANSPORT LINKS
- CLOSE TO LOCAL AMENITIES
- NO ONWARD CHAIN



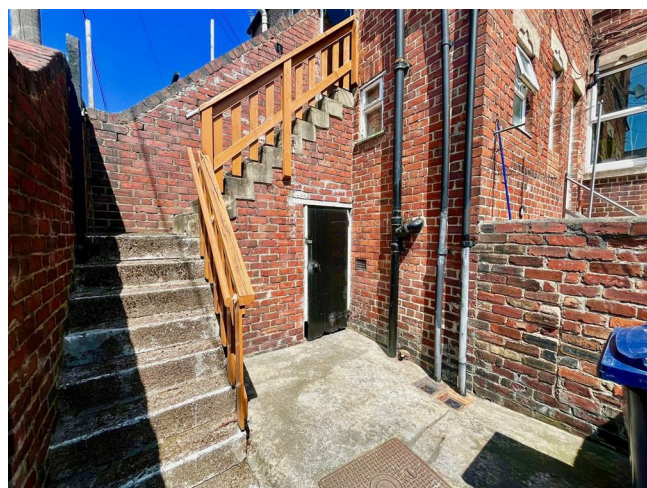
## Description

Fern Dene Road in Gateshead, this delightful Tyneside flat offers a perfect blend of character and modern living. Spanning an impressive 829 square feet, this spacious apartment features three well-proportioned bedrooms, making it an ideal choice for families or property investors seeking a lucrative opportunity.

Built in 1900, the property retains a sense of historical charm while providing the essential comforts of contemporary life. The inviting reception room serves as a welcoming space for relaxation and entertaining, while the well-appointed bathroom caters to the needs of a busy household.

One of the standout features of this property is its enviable location, just a stone's throw away from the picturesque Saltwell Park. This beautiful green space is perfect for leisurely strolls, picnics, and outdoor activities, enhancing the appeal of the area for both residents and visitors alike.

With no onward chain, this apartment presents a seamless transition for prospective buyers, allowing for a swift move-in process. Whether you are looking to invest in a rental property or seeking a new home, this flat is a remarkable opportunity not to be missed. Embrace the charm of Gateshead and make this lovely apartment your own.



ENTRANCE HALL/LANDING

LOUNGE

14'11 x 12'1

KITCHEN

7'8 x 7'8

BEDROOM ONE

16'11 x 12'1

BEDROOM TWO

11'9 x 7'9

BEDROOM THREE

9'4 x 7'8

BATHROOM

6 x 5

EXTERNAL

DISCLAIMER SALES



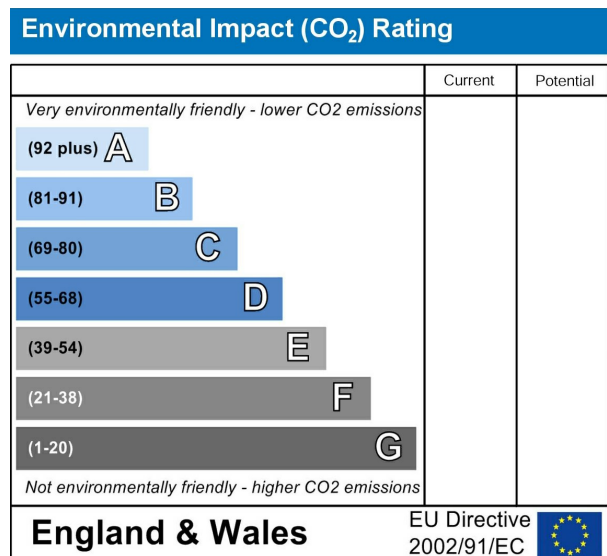
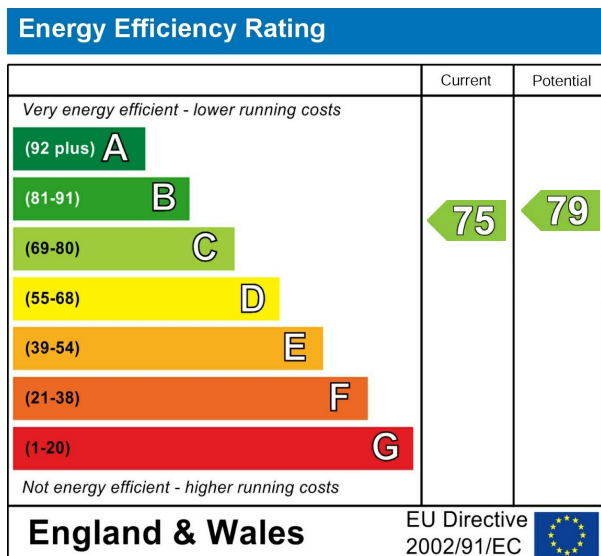








The particulars on these properties are set out as a general guidance for intended purchasers or tenants, and do not constitute part of an offer or contract. The Agent has not tested any apparatus, equipment, fixtures and fittings or services and so cannot verify that they are in working order or fit for the purpose. A Buyer is advised to obtain verification from their Solicitor or Surveyor. References to the Tenure of a Property are based on information supplied by the Seller. The Agent has not had sight of the title documents. A Buyer is advised to obtain verification from their Solicitor. All dimensions, descriptions and distances, reference to condition and necessary permissions for use and occupation, and other details are given without responsibility. Any intending purchasers or tenants should not rely on them as statements of fact, but must satisfy themselves by inspection or otherwise as to the correctness of each of them. Items shown in photographs are NOT included unless specifically mentioned within the sales particulars. They may however be available by separate negotiation. Measurements have been taken using a laser distance meter and may be subject to a margin of error. For further information see the Consumer Protection from Unfair Trading Regulations.



212 High Street  
Gateshead  
Tyne And Wear  
NE8 1AQ  
0191 500 8 500  
info@carouselestateagents.com  
<https://www.carouselestateagents.com>

